

WESTERN - SAN BERNARDINO WATERMASTER
FOR

WESTERN MUNICIPAL WATER DISTRICT et al.

vs.

EAST SAN BERNARDINO COUNTY WATER DISTRICT et al.

CASE NO. 78426 - COUNTY OF RIVERSIDE

ANNUAL REPORT

OF THE

WESTERN-SAN BERNARDINO WATERMASTER

FOR

CALENDAR YEAR 2010

August 1, 2011

WESTERN - SAN BERNARDINO WATERMASTER

FOR

WESTERN MUNICIPAL WATER DISTRICT ET AL.

vs.

EAST SAN BERNARDINO COUNTY WATER DISTRICT ET AL.

CASE NO. 78426 - COUNTY OF RIVERSIDE

SAMUEL H. FULLER, Member

380 East Vanderbilt Way
San Bernardino, CA 92408
Tel (909) 387-9200
Fax (909) 387-9247

JOHN V. ROSSI, Member

14205 Meridian Parkway
Riverside, CA 92518
Tel (951) 571-7100
Fax (951) 571-0592

August 1, 2011

TO: Clerk of Superior Court of Riverside County and All Parties

RE: Watermaster Report for Calendar Year 2010

We have the honor of submitting the Annual Report of the Western-San Bernardino Watermaster for Calendar Year 2010.

The provisions of Paragraph III and Paragraphs V through XII of the Judgment in Case No. 78426, entered April 17, 1969, became effective from and after January 1, 1971. The Judgment requires that the Watermaster report to the Court and to each Party in writing not more than seven months after the end of each year, or within such other time as the Court may fix, on each determination made by said Watermaster pursuant to the Judgment and such other items as the Parties may mutually request or the Watermaster may deem to be appropriate.

Accordingly, this report is submitted herewith under date of August 1, 2011, and presents the findings of the Watermaster for Calendar Year 2010 and summarizes the five-year period 2005 through 2009.

Provisions of the Judgment require that Western and San Bernardino Valley provide groundwater replenishment if certain base rights are exceeded. The determination of replenishment obligations for the five-year period 2005 through 2009 indicates that Western and San Bernardino Valley are not required to provide additional imported water for replenishment.

We, and each of us, hereby certify that this is a true and correct Report of the Watermaster for work performed by us, and under our supervision, for Calendar Year 2010 pursuant to the requirements of the Judgment.

Respectfully submitted,

WESTERN-SAN BERNARDINO WATERMASTER

By _____
Samuel H. Fuller

John V. Rossi

WESTERN - SAN BERNARDINO WATERMASTER
FOR

WESTERN MUNICIPAL WATER DISTRICT et al.

vs.

EAST SAN BERNARDINO COUNTY WATER DISTRICT et al.

CASE NO. 78426 - COUNTY OF RIVERSIDE

ANNUAL REPORT

OF THE

WESTERN-SAN BERNARDINO WATERMASTER

FOR

CALENDAR YEAR 2010

August 1, 2011

TABLE OF CONTENTS

	Page
Letter of Transmittal	
CHAPTER I – INTRODUCTION	1
Scope of Report.....	1
History of Litigation	2
Summary of Judgment No. 78426	4
CHAPTER II - WATERMASTER ACTIVITIES	
Groundwater Extractions	8
Distribution of Extractions	9
Ground Water Level Measurements.....	10
Stream Flow and Water Quality Measurements	10
Field Inspections.....	10
Western’s Replenishment Credits in the San Bernardino Basin Area	11
San Bernardino Valley and Western Water Rights from the Santa Ana River	11
Watermaster Collaborative Advisory Process.....	13
CHAPTER III - EXTRACTIONS FROM THE SAN BERNARDINO BASIN AREA.....	15
CHAPTER IV - NATURAL SAFE YIELD OF THE SAN BERNARDINO BASIN AREA AND ADJUSTED RIGHTS OF PLAINTIFF EXPORTERS	33
CHAPTER V - EXTRACTIONS FROM COLTON BASIN AREA AND RIVERSIDE BASIN AREA IN SAN BERNARDINO COUNTY	
For Use Outside San Bernardino Valley Municipal Water District	35
For Use Within San Bernardino Valley Municipal Water District	35
Minimum Water Surface Elevations.....	44

TABLE OF CONTENTS
(continued)

	Page	
CHAPTER VI - EXTRACTIONS FROM THE PORTION OF RIVERSIDE BASIN AREA IN RIVERSIDE COUNTY WHICH IS TRIBUTARY TO THE RIVERSIDE NARROWS		
Extractions	49	
Return Flows.....	54	
CHAPTER VII - EXTRACTIONS FROM THE SAN BERNARDINO BASIN AREA, COLTON BASIN AREA, AND RIVERSIDE BASIN AREA FOR USE WITHIN WESTERN ON LANDS THAT ARE NOT TRIBUTARY TO THE RIVERSIDE NARROWS.....		56
CHAPTER VIII - VERIFICATION OF EXTRACTIONS FROM THE SAN BERNARDINO BASIN AREA AND COLTON BASIN AREA WITHIN THE SAN BERNARDINO VALLEY MUNICIPAL WATER DISTRICT FOR USE ON LANDS NOT WITHIN WESTERN NOR TRIBUTARY TO THE RIVERSIDE NARROWS		
Deliveries to Chino Basin.....	58	
Deliveries to Areas Other Than Chino Basin	58	
CHAPTER IX - ANNUAL ACCOUNTING OF EXTRACTIONS, DELIVERIES, AND REPLENISHMENT OBLIGATIONS		
Plaintiffs' Extractions from San Bernardino Basin.....	61	
Non-Plaintiffs' Extractions from San Bernardino Basin Area	62	
Exports to Areas Not Tributary to Riverside Narrows	63	
Summary of Western's Credits and Obligations	64	
Summary of San Bernardino Valley's Credits and Obligations	65	
Replenishment Requirements	66	

LIST OF TABLES

No.	Title	Page
1	Costs to the Parties for USGS Surface Water Measurements Used by Western - San Bernardino Watermaster – November 1, 2009 to October 31, 2010	14
2	Verified Extractions from the San Bernardino Basin Area by Other Than Plaintiffs	19-23
3	Verified Extractions from the San Bernardino Basin Area for Use by Plaintiffs Classified According to Service Area	24-32
4	Verified Extractions from Colton Basin Area by San Bernardino and Riverside County Entities for Use Within Each County	36-39
5	Verified Extractions from Riverside Basin Area in San Bernardino County by San Bernardino and Riverside County Entities For Use Within Each County	40-43
6	Verified Extractions from the Riverside Basin Area in Riverside County for Use in Riverside County	50-53
7	Reduction in Return Flow Contributing to Base Flow at Riverside Narrows Resulting from Conversion of Agricultural Uses of Water to Domestic Uses Connected to a Sewage System Discharging to the River Below Riverside Narrows	55
8	Verified Extractions from the San Bernardino Basin Area, Colton Basin Area, and the Riverside Basin Area For Use Within Western on Lands That Are Not Tributary To The Riverside Narrows	57
9	Verified Extractions from the San Bernardino Basin Area and Colton Basin Area Within the San Bernardino Valley Municipal Water District for Use on Lands Not Within Western nor Tributary to the Riverside Narrows	60
10	Annual Accounting of Extractions From the San Bernardino Basin Area and the Deliveries to Each Service Area by the City of Riverside (Including Those Rights Acquired as Successor to the Riverside Water Company and the Gage Canal Company)	68-75
11	Annual Accounting of Extractions From the San Bernardino Basin Area and the Deliveries to Each Service Area by Riverside Highland Water Company	76-81

LIST OF TABLES
(Continued)

No.	Title	Page
12	Annual Accounting of Extractions From the San Bernardino Basin Area and the Deliveries to Each Service Area by Agua Mansa Water Company and Meeks & Daley Water Company.....	82-85
13	Annual Accounting of Extractions From the San Bernardino Basin Area and the Deliveries to Each Service Area by the Regents of the University of California	86-91
14	Annual Accounting for Western Municipal Water District Export of Extractions From San Bernardino Basin Area, Colton Basin Area, and Riverside Basin Area for Use Within Western on Lands That Are Not Tributary to the Riverside Narrows.....	92
15	Annual Accounting for San Bernardino Valley Municipal Water District Export of Extractions from San Bernardino Basin Area and Colton Basin Area for Use on Lands Not Within Western nor Tributary to the Riverside Narrows.....	93
16	Annual Accounting for Western Municipal Water District Extractions From Colton Basin Area and Riverside Basin Area in Riverside and San Bernardino Counties for Use Outside San Bernardino Valley	94-96
17	Annual Accounting for San Bernardino Valley Municipal Water District Extractions From the San Bernardino Basin Area.....	97-98
17A	Annual Accounting for Western Municipal Water District Extractions From the San Bernardino Basin Area.....	99
18	Summary of Replenishment Obligations, Western and San Bernardino Valley, Five-Year Period 2005 through 2009	100

FIGURES

No.	Title	Page
1	Groundwater Surface Elevation Johnson No. 1 Well (1S/4W-21Q3) - 2010	46
2	Groundwater Surface Elevation Flume No. 2 Well (1S/4W-29H1) - 2010	47
3	Groundwater Surface Elevation Flume No. 5 Well (1S/4W-29Q1) - 2010	48

MAPS

No.	Title	Page
1	Western-San Bernardino Watermaster Judgment	7
2	Location of Wells	45

CHAPTER I
INTRODUCTION

CHAPTER I

INTRODUCTION

Provisions of the physical solution set forth in the Judgment in Case No. 78426, Western Municipal Water District of Riverside County et al., vs. East San Bernardino County Water District et al., entered April 17, 1969, in the Superior Court of the State of California in and for the County of Riverside, established the entitlements and obligations of the two major water districts overlying the San Bernardino, Colton, and Riverside groundwater basins, namely San Bernardino Valley Municipal Water District (San Bernardino Valley) and Western Municipal Water District of Riverside County (Western).

The Court appointed a Watermaster, composed of two persons, to administer and enforce the provisions of the Judgment and to report annually to the Court and the parties. Samuel H. Fuller continues as the representative from San Bernardino Valley. John V. Rossi continues as the representative from Western.

The provisions of the Judgment became effective January 1, 1971; however, progress reports were filed with the Court for calendar years 1969, 1970, and 1971 reporting on the progress of verifications and initial determinations required by the Judgment. This report for calendar year 2010 includes a description and summary of the work completed during 2010 and also includes the annual accounting of extractions from the San Bernardino, Colton and Riverside Basin areas and the distribution of such extractions to the various service areas for calendar year 2009. The scope of this report for 2010 and a history of the litigation leading to the physical solution settling the case are set forth in some detail in succeeding paragraphs.

Scope of Report

Paragraph XIII(e) of the Judgment requires the Watermaster to report to the Court and each Party not more than seven months after the end of each year.

The Annual Reports of the Western-San Bernardino Watermaster for calendar years 1969 thru 1971 reported on the verifications and initial determinations required by the Judgment including the safe yield of the San Bernardino Basin Area and the determination of the Adjusted Rights of the Plaintiffs. Beginning with the 1972 Report, the Watermaster began the annual accounting in accordance with the Judgment provisions. This report presents the activities of the Watermaster for calendar year 2010 together with the annual accounting of extractions and deliveries for calendar year 2009.

History of Litigation

Before the turn of the twentieth century, the various water service organizations diverting surface water from the Santa Ana River and pumping from the underground water basins supplied by the underflow of the Santa Ana River and its tributaries have from time to time engaged in litigation over water rights within the San Bernardino, Riverside, and Orange County areas.

On October 18, 1963, the Orange County Water District (OCWD) filed suit against the City of Chino and others, seeking an adjudication of water rights against more than 2,500 water users in the Santa Ana River Watershed tributary to Prado Dam. Included among the defendants were the Chino Basin Municipal Water District (now Inland Empire Utility Agency), Western Municipal Water District of Riverside County (Western), and San Bernardino Valley Municipal Water District (San Bernardino Valley). Thirteen cross complaints were filed in 1968, which extended the adjudication to more than 1,500 water users in the area downstream from Prado Dam, which included OCWD. Thus, some 4,000 parties were involved in the suit, including the three upper districts and OCWD.

With a case of this magnitude, it became obvious that every effort should be made to arrive at an equitable settlement and a physical solution in order to obviate the enormous expense and unwieldy litigation which would be involved if the case were brought to trial.

Attorneys and engineers representing the four major districts and a large number of the defendants worked diligently in order to effect a settlement and some type of physical solution which would prove acceptable to all parties.

As a result, in May of 1968, an outline of a proposal for settlement of the case was prepared and a committee, composed of attorneys and engineers for the parties, commenced preparation of the settlement documents.

In June, 1968, the Court held a hearing on the motions which it had received requesting a preliminary injunction and an order of reference. The plaintiff OCWD, however, was concerned with the necessity of bringing the case to trial within the statutory period, and therefore, on July 15, 1968, submitted a motion to set the complaint in the case for trial. On October 15, 1968, the trial was commenced and adjourned after a half day of testimony on behalf of the Plaintiff.

Shortly thereafter, the parties filed settlement documents with the Court, including a stipulation for Judgment, and on April 17, 1969, the Court, entered the stipulated Judgment, thus terminating the many years of controversy over water rights along the Santa Ana River involving the issues and parties included in the case of Orange County Water District vs. City of Chino, et al.

During the settlement negotiations, it became apparent that the San Bernardino Valley entities would participate only in a part of the Orange County settlement, in the belief that they had no responsibility for the waters of the Santa Ana River downstream from the point of rising water at Riverside Narrows. Therefore, the settlement of the OCWD action established an obligation of San Bernardino Valley for the delivery of 15,250 acre-feet of Base Flow annually at the Riverside Narrows, subject, however, to adjustment for quality.

As a result of the Orange County settlement, it became apparent that a second settlement would be necessary between the Riverside and San Bernardino entities who

diverted water from the Santa Ana River surface and groundwater sources supplied by the Santa Ana River and tributaries above the Riverside Narrows.

For some time, increasing withdrawals from groundwater resources above Bunker Hill Dike (San Jacinto Fault), which supplied in large part the water requirements of San Bernardino and Redlands as well as the Riverside exporters, had been the cause of concern to the exporters in Riverside County. As a result, on March 1, 1963, a suit was filed by Western, and others, seeking a general adjudication of water rights within the San Bernardino Basin Area. This suit preceded the filing of the Orange County suit, and it was decided that this suit could well be used as a vehicle for a physical settlement between Riverside and San Bernardino interests.

Following extensive negotiations between Riverside and San Bernardino interests, a physical settlement was completed and documents delineating the settlement were entered in the Superior Court of the State of California in and for the County of Riverside on April 17, 1969, being Judgment No. 78426.

Summary of Judgment No. 78426

The physical solution as agreed upon and as set forth in the Judgment states that all instructions and orders of the Court are to be administered and enforced by a Watermaster consisting of a committee of two persons, one of whom shall be nominated by San Bernardino Valley and the other by Western and appointed by the Court.

The Judgment directed the Watermaster to make certain initial determinations and to verify the amounts of water diverted and pumped from streams and groundwater basins embraced by the Judgment where such amounts had been assumed for purposes of the Judgment. Upon completion of the verifications and initial determinations, compliance with the Judgment requires an annual accounting of groundwater and surface water flows and diversions within the various basins in order that the Watermaster may properly report to the Court the comparisons of the year-by-

year operations with the verified entitlements and an accounting as to the replenishment obligations or credits indicated by such comparison. The items verified or determined initially and to be reported on annually are as follows:

	Watermaster Determination Required by Judgment	Verified for Five Calendar Years Ending with 1963	To Be Determined Annually from and after 1971
1.	Total actual average annual extractions from the San Bernardino Basin Area by entities other than plaintiffs for use within San Bernardino County.	X	X
2.	The natural safe yield of the San Bernardino Basin Area based upon the cultural conditions equivalent to those existing during the five-calendar year period ending with 1963.	1	1
3.	The annual "adjusted right" of each Exporter (Plaintiff) to extract water from the San Bernardino Basin Area based upon the percentage of the natural safe yield determined by the methods used in Table B-2 of the Judgment.	X	
4.	The annual production by plaintiffs for comparison with adjusted right determined in item 3 next preceding.		X
5.	Annual discharge from the City of San Bernardino Water Quality Control Plant to the river as to quantity and quality.	2	X
6.	Average annual extractions from the Colton Basin Area for use outside San Bernardino Valley.	X	X
7.	Average annual extractions from the Riverside Basin Area within San Bernardino County for use outside San Bernardino Valley.	X	X
8.	The average static water levels within the Colton Basin and Riverside Basin within San Bernardino County as determined by the three wells listed in Judgment.	3	X

	Watermaster Determination Required by Judgment	Verified for Five Calendar Years Ending with 1963	To Be Determined Annually from and after 1971
9.	The average annual extractions from that portion of the Riverside Basin Area in Riverside County which are tributary to the Riverside Narrows for use in Riverside County.	X	X
10.	Annual amounts of water extracted for use within Western from the San Bernardino Basin and the area downstream therefrom to the Riverside Narrows which have been exported for use outside the area tributary to the Riverside Narrows.	X	X
11.	Annual amount of water extracted for use within San Bernardino County from the San Bernardino Basin Area and Colton Basin Area for use on lands which are not tributary to the Riverside Narrows.	4	X
12.	Reduction in return flow now contributing to base flows at Riverside Narrows which results from conversion of agriculture using water within Western to domestic or other uses connected to sewage or waste disposal system, the effluent from which is not tributary to the rising water at Riverside Narrows.	5	X

¹ Determined initially by supplemental order of the Court to be 232,100 acre-feet per annum. Such amount is subject to the continuing jurisdiction of the Court.

² Assumed for purposes of Judgment to be 16,000 acre-feet annually, verification not required.

³ Established at 822.04 feet above sea level, based on fall season of 1963.

⁴ Revised by Watermaster during preparation of the Annual Report for calendar year 1974.

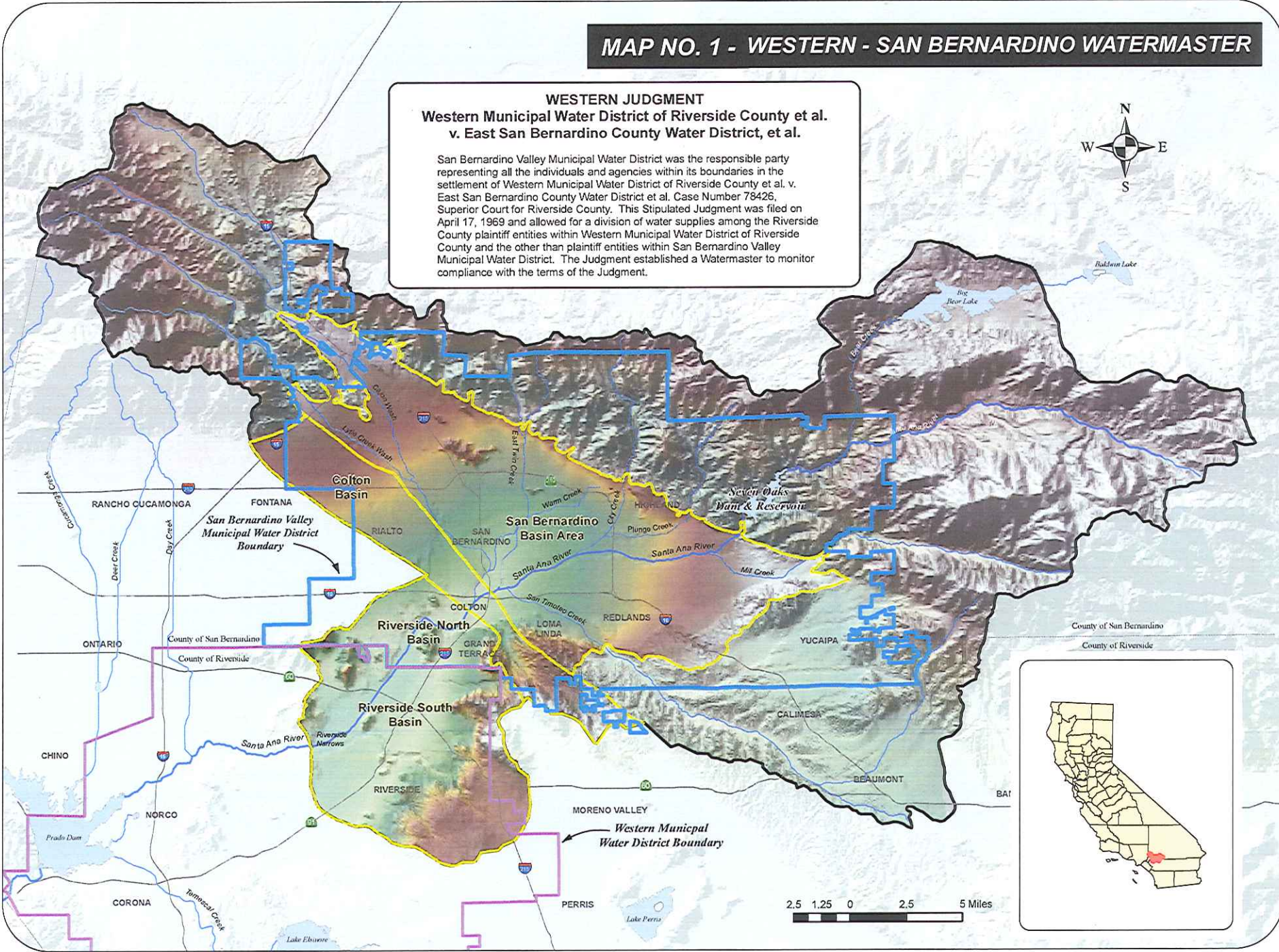
⁵ Average for 5 years ending with 1963 established by Judgment to be 3,916 acres; verification not required.

The foregoing initial determinations and verifications required by the Judgment have been completed and were reported in the *Annual Report of the Western-San Bernardino Watermaster for Calendar Years 1971 and 1972* and continue to be reported in each annual report of the Watermaster. Map No. 1 illustrates the boundaries of the groundwater basins covered by the Judgment.

MAP NO. 1 - WESTERN - SAN BERNARDINO WATERMASTER

WESTERN JUDGMENT
Western Municipal Water District of Riverside County et al.
v. East San Bernardino County Water District, et al.

San Bernardino Valley Municipal Water District was the responsible party representing all the individuals and agencies within its boundaries in the settlement of Western Municipal Water District of Riverside County et al. v. East San Bernardino County Water District et al. Case Number 78426, Superior Court for Riverside County. This Stipulated Judgment was filed on April 17, 1969 and allowed for a division of water supplies among the Riverside County plaintiff entities within Western Municipal Water District of Riverside County and the other than plaintiff entities within San Bernardino Valley Municipal Water District. The Judgment established a Watermaster to monitor compliance with the terms of the Judgment.



7

CHAPTER II
WATERMASTER ACTIVITIES

CHAPTER II

WATERMASTER ACTIVITIES

The Watermaster activities have included principally the collection, tabulation, and analysis of data, the maintenance of records, and the preparation of the annual report which presents the determinations and findings of the Watermaster as required by the Judgment.

Groundwater Extractions

The most important data required for implementing the provisions of the Judgment are the annual tabulations of the groundwater extractions and surface water diversions made within the San Bernardino, Colton, and Riverside Basin Areas. These extractions and diversions were initially determined and verified for the 1959-63 Base Period and were assembled and summarized in the Watermaster Report on Verification of Extractions, Volume 1 from the San Bernardino Basin Area (consisting of three parts), Volume 2 from the Colton Basin Area, Volume 3 from the Riverside Basin Area in San Bernardino County, and Volume 4 from the Riverside Basin Area in Riverside County. The Watermaster has established a system for tabulating annual notices of groundwater extractions and surface diversions filed with the State Water Resources Control Board or, since Calendar Year 2005, the Watermaster. The filed data are verified by the Watermaster and provide the basis for the annual accounting of extractions as required by the Judgment. Such extractions have been determined for calendar year 2009 and are summarized herein. Listings of the verified extractions by each individual owner for calendar year 2009 are assembled in Report of Watermaster, Volumes 1-2009, 1A-2009, 2-2009, 3-2009, and 4-2009.

Distribution of Extractions

In addition to the annual accounting of the extractions from each Basin, the Judgment also requires a determination as to the distribution of such extractions to the various service areas.

The distribution of verified extractions from the Colton and Riverside Basin Areas and the distribution of the Plaintiffs' extractions from the San Bernardino Basin Area were determined initially for the 1959-63 Base Period, and were reported in Report of Watermaster, Volume 5, entitled *Distribution of Extractions*. Such distribution has been determined for calendar year 2009 and is summarized herein. Detailed work sheets are assembled in Report of Watermaster, Volume 5-2009.

The Watermaster is also required to determine the amount of water extracted from each of the various Basin Areas and delivered to areas not tributary to Riverside Narrows. Such amounts fall into two classifications, described as follows:

- 1) Extractions from the San Bernardino Basin Area, Colton Basin Area, and Riverside Basin Area for use within Western on lands not tributary to the Riverside Narrows.
- 2) Extractions from the San Bernardino Basin Area and Colton Basin Area within the San Bernardino Valley Municipal Water District for use on lands not within Western nor tributary to the Riverside Narrows.

The amount of water extracted and delivered under Classification No. 1 was determined initially for the 1959-63 Base Period and was reported in the Report of Watermaster, Volume 6, dated June, 1972. The amount determined for calendar year 2009 is summarized herein. Detailed work sheets are assembled in the Report of Watermaster, Volume 6-2009.

The amount of water extracted and delivered under Classification No. 2 was determined for the 1959-63 Base Period and the additional years 1970 and 1971 and was published in the Report of Watermaster, Volume 7, dated February, 1973. The amount determined for calendar year 2009 is summarized herein. Detailed work sheets are assembled in the Report of Watermaster, Volume 7-2009.

Groundwater Level Measurements

Groundwater surface elevation data required for three key wells located in the Colton Basin Area and the Riverside Basin Area within San Bernardino County are currently furnished by the City of Riverside, San Bernardino Valley and Western.

These data are shown in both tabular and graphical form for calendar years 1963 thru 2009 in Volume 8 of previous Watermaster reports. The determination for calendar year 2010 is shown in the Report of Watermaster, Volume 8-2009.

Stream Flow and Water Quality Measurements

The program of stream flow measurements conducted by the United States Geological Survey (USGS) in cooperation with the Watermaster has continued to provide basin inflow and stream diversion data.

The Western-San Bernardino Watermaster participates with the Santa Ana River Watermaster in part of the expense of the cooperative program with the USGS on surface water gages and water quality monitors at various locations. These expenses are presented in reports filed by the Santa Ana River Watermaster. The costs incurred for stream flow data collected and analyzed by the USGS on behalf of the Western-San Bernardino Watermaster are set forth in Table No. 1.

Field Inspections

During the verification of the 2009 extractions from the San Bernardino, Colton and Riverside Basin Areas, many of the pumping facilities installed for extraction of groundwater and diversion of surface water were visited by the Watermasters or their representatives. Contact was made with many of the extractors to review their methods of computing extractions for the annual reports that were filed with the Watermaster.

During the initial verification program in the San Bernardino Basin Area, it was found that many groundwater producers and several diverters of surface water did not file their extractions and diversions with the State Water Resources Control Board. This condition was found to exist in many locations during the current year, which again

necessitated inspection trips and contacts with various owners by the Watermasters or their representatives.

Western's Replenishment Credits in the San Bernardino Basin Area

In 2004, Western and San Bernardino Valley began to implement paragraphs VI(b)6 and V(a) of the Judgment with respect to the importation by Western of water from the State Water Project for replenishment of the San Bernardino Basin Area. Under these provisions of the Judgment, and by agreement with San Bernardino Valley, Western acquired 3,500 acre-feet of water in 2004 and another 2,500 acre-feet in 2005 from The Metropolitan Water District of Southern California for replenishment of the San Bernardino Basin Area. Table 3, 17A and 18 have been added and/or modified to account for such replenishment and future extractions. The accumulated excess of replenishment over extractions by Western shall be shown as a Net Credit, and Western shall have the right to extract its Net Credit, or any portion thereof, at any future time, and transfer such right to any Plaintiff in this action, to be extracted in addition to any other rights such transferee may have. To the extent permitted by agreement with San Bernardino Valley, replenishment may be made to offset prior extractions, and shall be shown in the appropriate tables as a Net Obligation.

San Bernardino Valley and Western Water Rights from the Santa Ana River

San Bernardino Valley submitted its first application for water rights from the Santa Ana River to the State Water Resources Control Board on October 3, 1991. In this application, San Bernardino Valley requested that it be authorized to divert and store water from the Santa Ana River and its tributaries at Seven Oaks Dam and in the San Bernardino Basin Area. The State Water Resources Control Board (SWRCB) did not accept the application because the SWRCB had previously determined in Order WR 89-25 that the Santa Ana River watershed was a fully appropriated stream system. San Bernardino Valley and Western replaced this application with a new joint application and a petition for reconsideration of the fully appropriated stream status on May 31, 1995. This

second application requested that San Bernardino Valley and Western be authorized to divert and store water from the Santa Ana River and its tributaries at Seven Oaks Dam and in the San Bernardino Basin Area.

Seven Oaks Dam is located on the Santa Ana River upstream from the where the Santa Ana River enters the San Bernardino Basin Area. The United States Army Corps of Engineers completed construction of the Seven Oaks Dam on the Santa Ana River in calendar year 1999.

SWRCB conducted a hearing on the petition to reconsider the fully appropriated stream status in 2000 and found in Order WR 2000-12 that the fully appropriated stream status could be removed to allow consideration of the application from San Bernardino Valley and Western. In November 2002, San Bernardino Valley and Western submitted a second joint application. Other agencies along the Santa Ana River also submitted applications. On May 2, 3, 4 and 8, 2007 the SWRCB conducted a hearing for numerous applications on the Santa Ana River. In 2008, the SWRCB began to issue permits to several of the applicants.

During calendar year 2008, the SWRCB granted Temporary Permit Number 21212 to store and divert water from the Santa Ana River at Seven Oaks Dam to San Bernardino Valley and Western. Under Temporary Permit Number 21212, San Bernardino Valley and Western diverted 7,210 acre-feet of water from the Santa Ana River that had been captured by Seven Oaks Dam into the Santa Ana River recharge facilities. The Watermaster is in the process of determining what portion of the 7,210 acre-feet may be New Conservation under the terms of the Judgment.

During calendar year 2009, the SWRCB granted Temporary Permit Number 21232 to store and divert water from the Santa Ana River at Seven Oaks Dam to San Bernardino Valley and Western during the diversion season, January 1, 2009 through June 29, 2009. San Bernardino Valley and Western diverted 345.4 acre-feet of water from the Santa Ana River into the Santa Ana River recharge facilities under Temporary

Permit Number 21232. The SWRCB also granted Temporary Permit Number 21245 which authorized San Bernardino Valley and Western to divert water from the Santa Ana River during the period June 30, 2009 through September 30, 2009. San Bernardino Valley and Western diverted 20.0 acre-feet from the Santa Ana River to the Santa Ana River Recharge Facilities under Temporary Permit Number 21245.

On June 29, 2010 the SWRCB granted Permit Number 21264 and Permit Number 21265 pursuant to Application Number 31165 and Application Number 31370 respectively, to San Bernardino Valley and Western. Permit Number 21264 and Permit Number 21265 authorize San Bernardino Valley and Western to divert water from the Santa Ana River at numerous locations in amounts up to 198,317 acre-feet from January 1 to December 31 each year.

Watermaster Collaborative Advisory Process

The Watermaster has been collecting information and preparing reports to the Court, parties and interested individuals and agencies the appropriate information for 40 years. The Watermaster is seeking to improve the ways in which it prepares and presents the information required under the Judgment, and how that information is provided and conveyed to the Court and the public. The Watermaster elected to invite all interested persons and agencies to participate in a public process and on June 24, 2010 conducted the first Western – San Bernardino Watermaster Collaborative Advisory Process meeting. The public has shown interest and several subsequent meetings have been conducted. The discussions at the meetings have identified numerous issues that the Watermaster and the participants are exploring through a collaborative discussion process. The issues presently under discussion relate to the activities within the San Bernardino Basin Area, the Safe Yield and the Natural Safe Yield of the San Bernardino Basin Area and New Conservation. The Watermaster will be presenting more details of these discussions in future annual reports.

TABLE NO. 1
COSTS TO THE PARTIES FOR USGS
SURFACE WATER MEASUREMENTS USED BY
WESTERN-SAN BERNARDINO WATERMASTER
November 1, 2009 to October 31, 2010

	<u>Parties</u> <u>Share</u> <u>of Cost</u>	<u>USGS</u> <u>Share</u> <u>of Cost</u>
<u>Santa Ana River near Mentone</u>	\$21,300	\$14,200
<u>Mill Creek near Mentone</u>	14,300	0
<u>Plunge Creek near East Highland</u>	29,300	19,500
<u>City Creek near Highland</u>	21,300	14,200
<u>San Timoteo Creek near Loma Linda</u>	13,300	8,900
<u>East Twin Creek near Arrowhead Springs</u>	13,300	8,900
<u>Santa Ana River at E Street</u>	14,200	0
<u>Warm Creek near San Bernardino</u>	13,300	8,900
<u>Lytle Creek at Fontana Union Water Company Head Gates</u>		
Infiltration Pipeline meter	3,100	2,050
Lytle Creek near Fontana Streamflow	14,550	9,700
Weir No. 2 and No. 3 — Head Gate Diversion	13,300	0
20-ft. Weir — Forebay Spillway Return to Creek	13,300	0
<u>Southern California Edison Lower Power House on Lytle Creek</u>		
20-ft. Weir — Discharge of Lower Powerhouse	13,300	0
Parshall Flume — Return to Creek from Afterbay	13,300	0
Fontana Union Diversion (20-ft. Weir, West)	13,300	0
<u>Lone Pine Creek near Keenbrook</u>	0	0
<u>Cajon Creek below Lone Pine Creek near Keenbrook</u>	13,300	8,900
<u>Devil Canyon Creek near San Bernardino</u>	13,300	8,900
<u>Lytle Creek at Colton</u>	<u>13,300</u>	<u>8,900</u>
 SUBTOTAL FOR PARTIES	 \$264,350	
 SUBTOTAL FOR UNITED STATES GEOLOGICAL SURVEY		 <u>\$113,050</u>
 TOTAL COST FOR SURFACE WATER MEASUREMENTS		 \$377,400

CHAPTER III

**EXTRACTIONS FROM THE
SAN BERNARDINO BASIN AREA**

CHAPTER III

EXTRACTIONS FROM THE SAN BERNARDINO BASIN AREA

The extractions from the San Bernardino Basin Area have been classified as first, those extractions and diversions for use by other than Plaintiffs and second, those extractions and diversions for use by Plaintiffs.

The total verified extractions by other than Plaintiffs for calendar years 1971 through 2009, together with five-year totals, are shown on Table No. 2. The individual work sheets for the 2009 verifications are included in Report of Watermaster, Volume 1-2009.

The total verified extractions from the San Bernardino Basin Area by Plaintiffs for the 1959-63 Base Period and calendar years 1971 through 2009 are shown on Table No. 3. The individual work sheets for the 2009 verifications and distribution of extractions by Plaintiffs are included in Report of Watermaster, Volume 1A-2009 and Volume 5-2009.

For reference, the Adjusted Rights of other than Plaintiffs and Plaintiffs are also shown on Tables 2 and 3.

Paragraph VII of the Judgment entitled *Water Discharged Across Bunker Hill Dike* recites as follows:

San Bernardino Valley shall keep in force an agreement with the City of San Bernardino that the present annual quantity of municipal sewage effluent discharged across Bunker Hill Dike, assumed for all purposes herein to be 16,000 acre-feet annually, shall be committed to the discharge of the downstream obligations imposed on San Bernardino Valley under this Judgment or under the Orange County Judgment, and that such effluent shall comply with the requirements of the Santa Ana River Basin Regional Water Quality Control Board in effect December 31, 1968.

The Judgment does not charge the Watermaster with verification of the 16,000 acre-feet amount of sewage effluent discharge and the enforcement of the quality

requirements is considered to be the responsibility of the California Regional Water Quality Control Board — Santa Ana Region.

Prior to December, 1972, sewage effluent was discharged across the Bunker Hill Dike via Warm Creek (Plant No. 1) and the Santa Ana River (Plant No. 2). With the completion of the new Water Quality Control Plant at the "E" Street site (Plant No. 2) the total effluent discharge of the City of San Bernardino Water Quality Control Plant accrued to the Santa Ana River immediately upstream from the "E" Street Bridge. In January, 1973, the Watermaster in cooperation with the USGS began operation of a gaging station on the plant outfall to obtain a continuous record of the quantity and mineral quality of the sewage effluent discharged to the Santa Ana River. This station has been discontinued and Watermaster now relies on the City of San Bernardino for these data.

On April 1, 1996, the cities of San Bernardino and Colton began discharging their municipal wastewater effluent at a point several miles farther downstream from the historical discharge points, through the Rapid Infiltration and Extraction System (RIX). RIX is a 50-acre groundwater recharge and extraction system specifically designed to meet the filtration and disinfection requirements of *California Code of Regulations, Title 22*, for discharge in Reach Four of the Santa Ana River.

The Regional Water Quality Control Board had ordered the two cities to provide Title 22 treatment levels of their discharge prior to its entrance into the Santa Ana River. An evaluation indicated that a system for groundwater recharge and immediate extraction would accomplish the required treatment levels and would be more cost effective than a conventional tertiary treatment system at the existing plant sites. The RIX system is located adjacent to the Santa Ana River in the Riverside Basin Area in San Bernardino County. The project was constructed by the two cities with the Santa Ana Watershed Project Authority acting as the construction manager.

In order to ensure that the secondary effluent recharged to the groundwater system would be fully treated and recovered, it was determined that the amount of RIX extractions should exceed the amount of recharged water. The over-extraction, combined with the fact that the RIX discharge point is located several miles downstream from the prior discharge points of the two cities, had an immediate impact upon the flows at both Riverside Narrows and Prado. The effect of the changed points of discharge on the key wells (see Chapter V, Minimum Water Surface Elevation) is being monitored closely with monthly depth to water readings at the wells.

The discharge to the Santa Ana River from the Cities of San Bernardino and Colton has been determined by the Watermaster as shown on the following table:

Calendar Year	Plant No. 1 (Acre-Feet)	Plant No. 2 (Acre-Feet)	Total (Acre-Feet)	RIX (Acre-Feet) San Bernardino and Colton combined flows
1971	5,705	8,925	14,630	
1972	6,784	9,963	16,747	
1973	-	17,640	17,640	
1974	-	17,070	17,070	
1975	-	16,820	16,820	
1976	-	17,530	17,530	
1977	-	17,720	17,720	
1978	-	18,690	18,690	
1979	-	19,350	19,350	
1980	-	20,670	20,670	
1981	-	21,120	21,120	
1982	-	24,493	24,493	
1983	-	23,170	23,170	
1984	-	21,759	21,759	
1985	-	23,814	23,814	
1986	-	25,442	25,442	
1987	-	27,154	27,154	
1988	-	27,290	27,290	
1989	-	28,300	28,300	
1990	-	27,770	27,770	
1991	-	26,980	26,980	
1992	-	25,510	25,510	
1993	-	24,660	24,660	
1994	-	24,790	24,790	
1995	-	26,260	26,260	
1996	-	6,610	6,610	30,880
1997	-	0	0	44,950
1998	-	0	0	48,710
1999	-	0	0	48,040
2000	-	0	0	47,230
2001	-	0	0	47,250
2002	-	0	0	43,828
2003	-	242 ¹	242	45,713
2004	-	286 ¹	286	44,501
2005	-	4,249 ¹	4,249	42,267 ²
2006	-	1,155 ¹	1,155	44,979 ²
2007	-	75 ^{1,3}	75	43,153
2008	-	568 ^{1,3}	568	42,140
2009	-	217 ³	217	40,634
2010	-			
2011	-			
2012	-			
2013	-			
2014	-			
2015	-			

¹ Direct discharge of treated wastewater flows to SAR when the SAR flow rate at "E" Street Gage is adequate to provide 20:1 dilution.

² Amount corrected during 2007 verification.

³ Amount corrected during 2009 verification.

VERIFIED EXTRACTIONS FROM THE SAN BERNARDINO
BASIN AREA BY OTHER THAN PLAINTIFFS
ANNUAL TOTALS
(All Values in Acre-Feet)

Calendar Year	Verified Extractions		Total	Adjusted Right				
	By Owners Who Have Filed With SWRCB	By Owners Who Have Not Filed With SWRCB						
1971	154,836	2	8,350	2	163,186	2	171,342	1
1972	159,628	2	7,599	2	167,227	2	167,238	
1973	152,604	3	7,177	3	159,781	3	167,238	
1974	153,099	4	5,586	4	158,685	4	167,238	
1975	147,199		4,482		151,681		167,238	
1976	140,329	5	3,988	5	144,317	5	167,238	
1977	139,844		4,967		144,811		167,238	
1978	132,439		4,601		137,040		167,238	
1979	150,196		4,611		154,807		167,238	
1980	153,918	6	5,504		159,422	6	167,238	
1981	167,564		5,075		172,639		167,238	
1982	148,250	7	4,790		153,040	7	167,238	
1983	142,088	8	4,346		146,434	8	167,238	
1984	175,605	8	5,203		180,808	8	167,238	
1985	172,976	8	4,943	8	177,919	8	167,238	
1986	179,842	9	4,892		184,734	9	167,238	
1987	168,171		4,330		172,501		167,238	
1988	176,770	10	4,655		181,425	10	167,238	
1989	168,626	11	4,904		173,530	11	167,238	
1990	162,712		4,560		167,272		167,238	
1991	162,005		4,342		166,347		167,238	
1992	168,700	11	4,213		172,913	11	167,238	
1993	174,360	12	4,012		178,372	12	167,238	
1994	183,370	13	4,137		187,507	13	167,238	
1995	178,046	14	4,125		182,171	14	167,238	
1996	185,835	15	3,584		189,419	15	167,238	
1997	186,405	16	2,099		188,504	16	167,238	
1998	196,897	17	1,960		198,857	17	167,238	
1999	192,972	18	2,260		195,232	18	167,238	
2000	185,676	19	1,990		187,666	19	167,238	

VERIFIED EXTRACTIONS FROM THE SAN BERNARDINO
BASIN AREA BY OTHER THAN PLAINTIFFS
ANNUAL TOTALS
(All Values in Acre-Feet)

Calendar Year	Verified Extractions		Total	Adjusted Right		
	By Owners Who Have Filed With SWRCB	By Owners Who Have Not Filed With SWRCB				
2001	175,185	20, 25	1,648	176,833	20, 25	167,238
2002	176,788	21, 25	1,709	178,497	21, 25	167,238
2003	168,428	22, 25	1,456	169,884	22, 25	167,238
2004	177,044	23, 25	1,416	178,460	23, 25	167,238
2005	188,687	24-26	540	189,227	24-26	167,238
2006	206,797	25, 26	549	207,346	25, 26	167,238
2007	192,271	25, 26	594	192,865	25, 26	167,238
2008	190,887	26	398	191,285	26	167,238
2009	173,420		465	173,885		167,238
2010						
2011						
2012						
2013						
2014						
2015						

Note: See Report of Watermaster, Volume 1, Table 8, Total Verified Production from San Bernardino Basin Area Excluding Minor Production

1 Adjusted Right not effective until January 1, 1972; therefore,
1971 Base Right is as verified for five-year Base Period 1959-63.

2 Amount corrected during verification of 1973 extractions.

3 Amount corrected during verification of 1974 extractions.

4 Amount corrected during verification of 1975 extractions.

5 Amount corrected during verification of 1977 extractions.

6 Amount corrected during verification of 1981 extractions.

7 Amount corrected during verification of 1983 extractions.

8 Amount corrected during verification of 1986 extractions.

9 Amount corrected during verification of 1988 extractions.

10 Amount corrected during verification of 1989 extractions.

11 Amount corrected during verification of 1995 extractions.

12 Includes 1,530 acre-feet pumped by Riverside to OCWD under June 16, 1993 amendment
to December 22, 1981 agreements. Amount corrected during verification of 1994 extractions.
Amount corrected during verification of 2005 extractions.

VERIFIED EXTRACTIONS FROM THE SAN BERNARDINO
BASIN AREA BY OTHER THAN PLAINTIFFS

- 13 Includes 3,485 acre-feet pumped by Riverside to OCWD under March 2, 1994 amendment to December 22, 1981 agreements.
14 Includes 177 acre-feet pumped by Riverside to OCWD under March 15, 1995 amendment to December 22, 1981 agreements.
Amount corrected during verification of 1996 extractions.
- 15 Includes 2,768 acre-feet pumped by Riverside to OCWD under March 6, 1996 amendment to December 22, 1981 agreements.
Amount corrected during verification of 1998 extractions.
- 16 Includes 1,873 acre-feet pumped by Riverside to OCWD under February 19, 1997 amendment to December 22, 1981 agreements.
Amount corrected during verification of 1998 extractions.
- 17 Includes 1,049 acre-feet pumped by Riverside to OCWD under April 30, 1998 amendment to December 22, 1981 agreements.
Amount corrected during verification of 1999 extractions.
- 18 Includes 3,726 acre-feet pumped to OCWD under January 6, 1999, 12th Amendment to December 22, 1981 agreements.
Riverside Highland also pumped 2,041 acre-feet to OCWD.
- 19 Includes 3,162 acre-feet pumped to OCWD under August 16, 2000, 14th Amendment to December 22, 1981 agreements.
Riverside Highland also pumped 567 acre-feet to OCWD.
Amount corrected during verification of 2005 extractions.
- 20 Includes 415 acre-feet pumped to OCWD under February 7, 2001, 16th Amendment to December 22, 1981 agreements.
Riverside Highland also pumped 260 acre-feet to OCWD.
Amount corrected during verification of 2005 extractions.
- 21 Includes 1,772 acre-feet pumped to OCWD under February 6, 2002, 18th Amendment to December 22, 1981 agreements.
Riverside Highland also pumped 1,910 acre-feet to OCWD.
Amount corrected during verification of 2005 extractions.
- 22 Amount corrected during verification of 2005 extractions. Amount corrected during verification of 2007 extractions.
- 23 Includes 0 acre-feet pumped to OCWD under August 18, 2004, 20th Amendment to December 22, 1981 agreements.
Riverside Highland also pumped 0 acre-feet to OCWD. Amount corrected during verification of 2005 extractions.
Amount corrected during verification of 2007 extractions.
- 24 Amount corrected during verification of 2006 extractions. Amount corrected during verification of 2007 extractions.
- 25 Amount corrected during verification of 2008 extractions. Corrected formula for minor producers.
- 26 Amount corrected during verification of 2009 extractions. San Bernardino County filed extractions.

VERIFIED EXTRACTIONS FROM THE SAN BERNARDINO
BASIN AREA BY OTHER THAN PLAINTIFFS
FIVE-YEAR TOTALS
(All Values in Acre-Feet)

Five-Year Period	Verified Extractions		Total	Adjusted Right
	By Owners Who Have Filed With SWRCB	By Owners Who Have Not Filed With SWRCB		
1971-75	767,366	33,194	800,560	840,294
1972-76	752,859	28,832	781,691	836,190
1973-77	733,075	26,200	759,275	836,190
1974-78	712,910	23,624	736,534	836,190
1975-79	710,007	22,649	732,656	836,190
1976-80	716,726	23,671	740,397	836,190
1977-81	743,961	24,758	768,719	836,190
1978-82	752,367	24,581	776,948	836,190
1979-83	762,016	24,326	786,342	836,190
1980-84	787,425	24,918	812,343	836,190
1981-85	806,483	24,357	830,840	836,190
1982-86	818,761	24,174	842,935	836,190
1983-87	838,682	23,714	862,396	836,190
1984-88	873,364	24,023	897,387	836,190
1985-89	866,385	23,724	890,109	836,190
1986-90	856,121	23,341	879,462	836,190
1987-91	838,284	22,791	861,075	836,190
1988-92	838,813	22,674	861,487	836,190
1989-93	836,403	22,031	858,434	836,190
1990-94	851,147	21,264	872,411	836,190
1991-95	866,481	20,829	887,310	836,190
1992-96	890,311	20,071	910,382	836,190
1993-97	908,016	17,957	925,973	836,190
1994-98	930,553	15,905	946,458	836,190
1995-99	940,155	14,028	954,183	836,190

VERIFIED EXTRACTIONS FROM THE SAN BERNARDINO
BASIN AREA BY OTHER THAN PLAINTIFFS
FIVE-YEAR TOTALS
(All Values in Acre-Feet)

Five-Year Period	Verified Extractions		Total	Adjusted Right
	By Owners Who Have Filed With SWRCB	By Owners Who Have Not Filed With SWRCB		
1996-00	947,785	11,893	959,678	836,190
1997-01	937,135	9,957	947,092	836,190
1998-02	927,518	9,567	937,085	836,190
1999-03	899,049	9,063	908,112	836,190
2000-04	883,121	8,219	891,340	836,190
2001-05	886,132	6,769	892,901	836,190
2002-06	917,744	5,670	923,414	836,190
2003-07	933,227	4,555	937,782	836,190
2004-08	955,686	3,497	959,183	836,190
2005-09	952,062	2,546	954,608	836,190
2006-10				
2007-11				
2008-12				
2009-13				
2010-14				
2011-15				

Note: 5-year totals corrected to reflect any corrections on Table 2, Page 1a of 2 and Page 1b of 2

**TABLE NO. 3
VERIFIED EXTRACTIONS FROM THE SAN BERNARDINO BASIN AREA
FOR USE BY PLAINTIFFS CLASSIFIED ACCORDING TO SERVICE AREA
(All Values in Acre-Feet)**

		Plaintiffs						
		City of Riverside (including those rights acquired as successor to the Riverside Water Company and the Gage Canal Company)	Riverside Highland Water Company	Agua Mansa Water Company and Meeks & Daley Water Co.	Regents of the University of California	Total		
Total Extractions in San Bernardino Basin Area	Adjusted Right	1	52,199	4,294	7,833	536	64,862	
	1971 Extractions		53,882	4,012	2,902	219	61,015	
	1972 Extractions		45,694	4,532	3,527	239	53,992	
	1973 Extractions		43,022	3,512	2,979	239	49,752	
	1974 Extractions		43,367	4,088	4,504	267	52,226	
	1975 Extractions		47,962	4,709	3,950	179	56,800	
Delivery to San Bernardino Basin Area	Adjusted Right	1	1,427	0	0	0	1,427	
	1971 Extractions		98	0	0	0	98	
	1972 Extractions		85	0	0	0	85	
	1973 Extractions		156	0	0	0	156	
	1974 Extractions		0	0	0	0	0	
	1975 Extractions		0	0	0	0	0	
Delivery to Colton Basin Area and Riverside Basin Area in San Bernardino County	Adjusted Right	1	1,230	2,449	318	0	3,997	
	1971 Extractions		669	2,388	383	0	3,440	
	1972 Extractions		547	2,239	377	0	3,163	
	1973 Extractions		512	1,751	250	0	2,513	
	1974 Extractions		550	1,985	246	0	2,781	
	1975 Extractions		498	2,002	168	0	2,668	
Delivery to Area Outside San Bernardino Valley	Adjusted Right	1	49,542	1,845	7,515	536	59,438	
	1971 Extractions		53,115	1,624	2,519	219	57,477	
	1972 Extractions		45,062	2,293	3,150	239	50,744	
	1973 Extractions		42,354	1,761	2,729	239	47,083	
	1974 Extractions		42,817	2,103	4,258	267	49,445	
	1975 Extractions		47,464	2,707	3,782	179	54,132	

1 Adjusted Right became effective on January 1, 1972; Base Right for Calendar Year 1971 is as shown in Table B-1 of the Judgment.
2 1971 amount corrected during verification of 1972 extractions.

Note: See Report of Watermaster, Volume 1A, Table 3; and Volume 5, Table 36A.

24

TABLE NO. 3
 VERIFIED EXTRACTIONS FROM THE SAN BERNARDINO BASIN AREA
 FOR USE BY PLAINTIFFS CLASSIFIED ACCORDING TO SERVICE AREA
 (All Values in Acre-Feet)

		Plaintiffs					
		City of Riverside (including those rights acquired as successor to the Riverside Water Company and the Gage Canal Company)	Riverside Highland Water Company	Agua Mansa Water Company and Meeks & Daley Water Co.	Regents of the University of California	Total	
Total Extractions in San Bernardino Basin Area	Adjusted Right	1	52,199	4,294	7,833	536	64,862
	1976 Extractions		51,374	4,519	5,393	245	61,531
	1977 Extractions		50,999	3,583	4,220	87	58,889
	1978 Extractions		45,384	1,350	2,254	183	49,171
	1979 Extractions		52,377	3,369	3,930	83	59,759
	1980 Extractions		50,756	3,677	2,333	7	56,773
Delivery to San Bernardino Basin Area	Adjusted Right	1	1,427	0	0	0	1,427
	1976 Extractions		0	0	0	0	0
	1977 Extractions		0	0	0	0	0
	1978 Extractions		646 2	0	0	0	646 2
	1979 Extractions		0	0	0	0	0
	1980 Extractions		383	0	0	0	383
Delivery to Colton Basin Area and Riverside Basin Area in San Bernardino County	Adjusted Right	1	1,230	2,449	318	0	3,997
	1976 Extractions		523	2,050	182	0	2,755
	1977 Extractions		346	1,820	146	0	2,312
	1978 Extractions		301	1,051	161	0	1,513
	1979 Extractions		415	1,781	166 3	0	2,362 3
	1980 Extractions		0	2,060	323	0	2,383
Delivery to Area Outside San Bernardino Valley	Adjusted Right	1	49,542	1,845	7,515	536	59,438
	1976 Extractions		50,851	2,469	5,211	245	58,776
	1977 Extractions		50,653	1,763	4,074	87	56,577
	1978 Extractions		44,437 2	299	2,093	183	47,012 2
	1979 Extractions		51,962	1,588	3,764 3	83	57,397 3
	1980 Extractions		50,373	1,617	2,010	7	54,007

1 Adjusted Right became effective on January 1, 1972; Base Right for Calendar Year 1971 is as shown in Table B-1 of the Judgment.

2 Amount corrected during verification of 1980 extractions.

3 Amount corrected during preparation of report for Calendar Year 1982.

Note: See Report of Watermaster, Volume 1A, Table 3; and Volume 5, Table 36A.

25

TABLE NO. 3
 VERIFIED EXTRACTIONS FROM THE SAN BERNARDINO BASIN AREA
 FOR USE BY PLAINTIFFS CLASSIFIED ACCORDING TO SERVICE AREA
 (All Values in Acre-Feet)

		Plaintiffs							
		City of Riverside (including those rights acquired as successor to the Riverside Water Company and the Gage Canal Company)	Riverside Highland Water Company	Agua Mansa Water Company and Meeks & Daley Water Co.	Regents of the University of California	Total			
Total Extractions in San Bernardino Basin Area	Adjusted Right	1	52,199	4,294	7,833	536	64,862		
	1981 Extractions		52,157	3,604	3,092	143	58,996		
	1982 Extractions		49,599	2,795	3,716	48	56,158		
	1983 Extractions		46,064	3,161	2,651	0	51,876		
	1984 Extractions		58,906	4,759	5,165	0	68,830		
	1985 Extractions		63,073	3,312	5,385	0	71,770		
Delivery to San Bernardino Basin Area	Adjusted Right	1	1,427	0	0	0	1,427		
	1981 Extractions		724	0	0	0	724		
	1982 Extractions		162	2	0	0	162	2	
	1983 Extractions		335	0	0	0	335		
	1984 Extractions		32	0	0	0	32		
	1985 Extractions		59	0	0	0	59		
Delivery to Colton Basin Area and Riverside Basin Area in San Bernardino County	Adjusted Right	1	1,230	2,449	318	0	3,997		
	1981 Extractions		0	2,151	358	0	2,509		
	1982 Extractions		0	1,775	169	0	1,944		
	1983 Extractions		0	2,318	245	0	2,563		
	1984 Extractions		0	2,671	233	0	2,904		
	1985 Extractions		0	1,978	210	0	2,188		
Delivery to Area Outside San Bernardino Valley	Adjusted Right	1	49,542	1,845	7,515	536	59,438		
	1981 Extractions		51,433	1,453	2,734	143	55,763		
	1982 Extractions		49,437	2	1,020	3,547	48	54,052	2
	1983 Extractions		45,729	843	2,406	0	48,978		
	1984 Extractions		58,874	2,088	4,932	0	65,894		
	1985 Extractions		63,014	1,334	5,175	0	69,523		

1 Adjusted Right became effective on January 1, 1972; Base Right for Calendar Year 1971 is as shown in Table B-1 of the Judgment

2 Amount corrected during verification of 1983 extractions.

Note: See Report of Watermaster, Volume 1A, Table 3; and Volume 5, Table 36A.

TABLE NO. 3
 VERIFIED EXTRACTIONS FROM THE SAN BERNARDINO BASIN AREA
 FOR USE BY PLAINTIFFS CLASSIFIED ACCORDING TO SERVICE AREA
 (All Values in Acre-Feet)

		Plaintiffs					
		City of Riverside (including those rights acquired as successor to the Riverside Water Company and the Gage Canal Company)	Riverside Highland Water Company	Agua Mansa Water Company and Meeks & Daley Water Co.	Regents of the University of California	Total	
Total Extractions	Adjusted Right	1	52,199	4,294	7,833	536	64,862
in San Bernardino	1986 Extractions		59,979	4,744	5,570	48	70,341
Basin Area	1987 Extractions		57,841	3,919	4,914	195	66,869
	1988 Extractions		64,512	4,775	4,966	179	74,432
	1989 Extractions		50,784	4,681	5,392	62	60,919
	1990 Extractions		47,637	4,092	3,851	95	55,675
Delivery to	Adjusted Right	1	1,427	0	0	0	1,427
San Bernardino	1986 Extractions		437	0	0	0	437
Basin Area	1987 Extractions		334	0	0	0	334
	1988 Extractions		815	0	0	0	815
	1989 Extractions		28	0	0	0	28
	1990 Extractions		19	0	0	0	19
Delivery to Colton	Adjusted Right	1	1,230	2,449	318	0	3,997
Basin Area and	1986 Extractions		0	2,130	234	0	2,364
Riverside Basin Area	1987 Extractions		0	2,229	193	0	2,422
in San Bernardino	1988 Extractions		0	2,229	233	0	2,462
County	1989 Extractions		0	1,968	240	0	2,208
	1990 Extractions		0	2,313	83	0	2,396
Delivery to Area	Adjusted Right	1	49,542	1,845	7,515	536	59,438
Outside	1986 Extractions		59,542	2,614	5,336	48	67,540
San Bernardino Valley	1987 Extractions		57,507	1,690	4,721	195	64,113
	1988 Extractions		63,697	2,546	4,733	179	71,155
	1989 Extractions		50,756	2,713	5,152	62	58,683
	1990 Extractions		47,618	1,779	3,768	95	53,260

1 Adjusted Right became effective on January 1, 1972; Base Right for Calendar Year 1971 is as shown in Table B-1 of the Judgment.

Note: See Report of Watermaster, Volume 1A, Table 3; and Volume 5, Table 36A.

27

TABLE NO. 3
 VERIFIED EXTRACTIONS FROM THE SAN BERNARDINO BASIN AREA
 FOR USE BY PLAINTIFFS CLASSIFIED ACCORDING TO SERVICE AREA
 (All Values in Acre-Feet)

		Plaintiffs					
		City of Riverside (including those rights acquired as successor to the Riverside Water Company and the Gage Canal Company)	Riverside Highland Water Company	Agua Mansa Water Company and Meeks & Daley Water Co.	Regents of the University of California	Total	
Total Extractions in San Bernardino Basin Area	Adjusted Right	1	52,199	4,294	7,833	536	64,862
	1991 Extractions		52,909	3,021	4,426	23	60,379
	1992 Extractions		50,239	4,052	4,100	32	58,423
	1993 Extractions		52,114	3,241	5,013	0	60,368
	1994 Extractions		60,447	4,324	4,525	0	69,296
	1995 Extractions		55,392	3,955	3,560	0	62,907
Delivery to San Bernardino Basin Area	Adjusted Right	1	1,427	0	0	0	1,427
	1991 Extractions		155	0	0	0	155
	1992 Extractions		203	0	0	0	203
	1993 Extractions		-108	0	0	0	-108
	1994 Extractions		46	0	0	0	46
	1995 Extractions		99	0	0	0	99
Delivery to Colton Basin Area and Riverside Basin Area in San Bernardino County	Adjusted Right	1	1,230	2,449	318	0	3,997
	1991 Extractions		0	1,669	190	0	1,859
	1992 Extractions		0	2,275	118	0	2,393
	1993 Extractions		0	1,777	276	0	2,053
	1994 Extractions		0	2,201	227	0	2,428
	1995 Extractions		0	2,146	145	0	2,291
Delivery to Area Outside San Bernardino Valley	Adjusted Right	1	49,542	1,845	7,515	536	59,438
	1991 Extractions		52,754	1,352	4,236	23	58,365
	1992 Extractions		50,036	1,777	3,982	32	55,827
	1993 Extractions		52,222	1,464	4,737	0	58,423
	1994 Extractions		60,401	2,123	4,298	0	66,822
	1995 Extractions		55,293	1,809	3,415	0	60,517

1 Adjusted Right became effective on January 1, 1972; Base Right for Calendar Year 1971 is as shown in Table B-1 of the Judgment.

Note: See Report of Watermaster, Volume 1A, Table 3; and Volume 5, Table 36A.

TABLE NO. 3
VERIFIED EXTRACTIONS FROM THE SAN BERNARDINO BASIN AREA
FOR USE BY PLAINTIFFS CLASSIFIED ACCORDING TO SERVICE AREA
(All Values in Acre-Feet)

		Plaintiffs						
		City of Riverside (including those rights acquired as successor to the Riverside Water Company and the Gage Canal Company)	Riverside Highland Water Company	2	Agua Mansa Water Company and Meeks & Daley Water Co.	Regents of the University of California	Total	
Total Extractions in San Bernardino Basin Area	Adjusted Right	1	52,199	4,294	7,833	536	64,862	
	1996 Extractions		63,382	5,051	3,912	445	72,790	
	1997 Extractions		59,938	4,939	4,165	505	69,547	
	1998 Extractions		54,417	3,250	3,828	590	62,085	
	1999 Extractions		61,142	4,972	6,289	586	72,989	
	2000 Extractions		63,472	3,423	3,832	624	71,351	
Delivery to San Bernardino Basin Area	Adjusted Right	1	1,427	0	0	0	1,427	
	1996 Extractions		278	0	0	0	278	
	1997 Extractions		494	0	0	0	494	
	1998 Extractions		0	0	0	0	0	
	1999 Extractions		181	0	0	0	181	
	2000 Extractions		117	0	0	0	117	
Delivery to Colton Basin Area and Riverside Basin Area in San Bernardino County	Adjusted Right	1	1,230	2,449	318	0	3,997	
	1996 Extractions		0	2,756	194	0	2,950	
	1997 Extractions		0	2,656	137	0	2,793	
	1998 Extractions		0	1,961	210	0	2,171	
	1999 Extractions		0	2,082	90	0	2,172	
	2000 Extractions		0	2,811	352	0	3,163	
Delivery to Area Outside San Bernardino Valley	Adjusted Right	1	49,542	1,845	7,515	536	59,438	
	1996 Extractions		63,104	2,295	3,718	445	69,562	
	1997 Extractions		59,444	2,283	4,028	505	66,260	
	1998 Extractions		54,417	1,289	3,618	590	59,914	
	1999 Extractions		60,961	2,890	6,199	586	70,636	
	2000 Extractions		63,355	612	3,480	624	68,071	

1 Adjusted Right became effective on January 1, 1972; Base Right for Calendar Year 1971 is as shown in Table B-1 of the Judgment.

2 Includes HGMP pumping by Riverside Highland in years 1999(2,041af) and 2000(567af) which is included as delivery outside Valley District (actual extraction Volume 1A, Table 2 : 0 : Table 23R Column 6: [1-3])

Note: See Report of Watermaster, Volume 1A, Table 3; and Volume 5, Table 36A.

**TABLE NO. 3
VERIFIED EXTRACTIONS FROM THE SAN BERNARDINO BASIN AREA
FOR USE BY PLAINTIFFS CLASSIFIED ACCORDING TO SERVICE AREA
(All Values in Acre-Feet)**

		Plaintiffs						
		City of Riverside (including those rights acquired as successor to the Riverside Water Company and the Gage Canal Company)	Riverside Highland Water Company 2	Agua Mansa Water Company and Meeks & Daley Water Co.	Regents of the University of California	Total	Western Municipal Water District	
Total Extractions in San Bernardino Basin Area	Adjusted Right	1	52,199	4,294	7,833	536	64,862	0
	2001 Extractions		59,312	2,925	3,671	617	66,525	0
	2002 Extractions		65,462	4,310	5,800	618	76,190	0
	2003 Extractions	3	54,514	3,881	7,440	536	66,371	0
	2004 Extractions		53,414	1,754	3,782	618	59,568	0
	2005 Extractions	3	44,696	3,377	5,891	536	54,500	0
Delivery to San Bernardino Basin Area	Adjusted Right	1	1,427	0	0	0	1,427	0
	2001 Extractions		229	0	0	0	229	0
	2002 Extractions		172	0	0	0	172	0
	2003 Extractions		10	0	0	0	10	0
	2004 Extractions		0	0	0	0	0	0
	2005 Extractions		13	0	0	0	13	0
Delivery to Colton Basin Area and Riverside Basin Area in San Bernardino County	Adjusted Right	1	1,230	2,449	318	0	3,997	0
	2001 Extractions		0	2,543	192	0	2,735	0
	2002 Extractions		0	2,272	202	0	2,474	0
	2003 Extractions		0	2,036	49	0	2,085	0
	2004 Extractions		0	1,301	19	0	1,320	0
	2005 Extractions		0	1,532	4	0	1,536	0
Delivery to Area Outside San Bernardino Valley	Adjusted Right	1	49,542	1,845	7,515	536	59,438	0
	2001 Extractions		59,083	382	3,479	617	63,561	0
	2002 Extractions		65,290	2,038	5,598	618	73,544	0
	2003 Extractions	3	54,504	1,845	7,391	536	64,276	0
	2004 Extractions		53,414	453	3,763	618	58,248	0
	2005 Extractions	3	44,683	1,845	5,887	536	52,951	0

30

1 Adjusted Right became effective on January 1, 1972; Base Right for Calendar Year 1971 is as shown in Table B-1 of the Judgment.

2 Includes HGMP pumping by Riverside Highland in years 2001(260af), 2002(1,910af) and 2003(3af from 2002 HGMP pumping) which is included as delivery outside Valley District (actual extraction Volume 1A, Table 2 : 0 : Volume 5, Table 23R pg. 2 Column 6: [1-3])

Note: See Report of Watermaster, Volume 1A , Table 3; and Volume 5, Table 36A.

**TABLE NO. 3
VERIFIED EXTRACTIONS FROM THE SAN BERNARDINO BASIN AREA
FOR USE BY PLAINTIFFS CLASSIFIED ACCORDING TO SERVICE AREA
(All Values in Acre-Feet)**

		Plaintiffs						
		City of Riverside (including those rights acquired as successor to the Riverside Water Company and the Gage Canal Company)	Riverside Highland Water Company	Agua Mansa Water Company and Meeks & Daley Water Co.	Regents of the University of California	Total	Western Municipal Water District	
Total Extractions in San Bernardino Basin Area	Adjusted Right	1	52,199	4,294	7,833	536	64,862	0
	2006 Extractions	3	49,444	4,149	7,515	536	61,644	0
	2007 Extractions		52,018	3,633	7,591	536	63,778	0
	2008 Extractions		53,581	2,730	4,832	536	61,679	0
	2009 Extractions		43,061	1,648	6,345	536	51,590	0
	2010 Extractions							
Delivery to San Bernardino Basin Area	Adjusted Right	1	1,427	0	0	0	1,427	0
	2006 Extractions		30	0	0	0	30	0
	2007 Extractions		39	0	0	0	39	0
	2008 Extractions		70	0	0	0	70	0
	2009 Extractions		121	0	0	0	121	0
	2010 Extractions							
Delivery to Colton Basin Area and Riverside Basin Area in San Bernardino County	Adjusted Right	1	1,230	2,449	318	0	3,997	0
	2006 Extractions		0	2,304	0	0	2,304	0
	2007 Extractions		0	1,772	0	0	1,772	0
	2008 Extractions		0	2,054	0	0	2,054	0
	2009 Extractions		0	1,073	0	0	1,073	0
	2010 Extractions							
Delivery to Area Outside San Bernardino Valley	Adjusted Right	1	49,542	1,845	7,515	536	59,438	0
	2006 Extractions	3	49,414	1,845	7,515	536	59,310	0
	2007 Extractions		51,979	1,861	7,591	536	61,967	0
	2008 Extractions		53,511	676	4,832	536	59,555	0
	2009 Extractions		42,940	575	6,345	536	50,396	0
	2010 Extractions							

1 Adjusted Right became effective on January 1, 1972; Base Right for Calendar Year 1971 is as shown in Table B-1 of the Judgment.

Note: See Report of Watermaster, Volume 1A, Table 3; and Volume 5, Table 36A.

2 Number not used on this page.

3 Verified extractions corrected to comply with reported agreements among Plaintiffs.

4 Verified extractions corrected during 2009 verification, Gage 6.

31

TABLE NO. 3
 VERIFIED EXTRACTIONS FROM THE SAN BERNARDINO BASIN AREA
 FOR USE BY PLAINTIFFS CLASSIFIED ACCORDING TO SERVICE AREA
 (All Values in Acre-Feet)

		Plaintiffs							
		City of Riverside (including those rights acquired as successor to the Riverside Water Company and the Gage Canal Company)	Riverside Highland Water Company	Agua Mansa Water Company and Meeks & Daley Water Co.	Regents of the University of California	Total	Western Municipal Water District		
Total Extractions in San Bernardino Basin Area	Adjusted Right	1	52,199	4,294	7,833	536	64,862	0	
	2011 Extractions								
	2012 Extractions								
	2013 Extractions								
	2014 Extractions								
Delivery to San Bernardino Basin Area	Adjusted Right	1	1,427	0	0	0	1,427	0	
	2011 Extractions								
	2012 Extractions								
	2013 Extractions								
	2014 Extractions								
Delivery to Colton Basin Area and Riverside Basin Area in San Bernardino County	Adjusted Right	1	1,230	2,449	318	0	3,997	0	
	2011 Extractions								
	2012 Extractions								
	2013 Extractions								
	2014 Extractions								
Delivery to Area Outside San Bernardino Valley	Adjusted Right	1	49,542	1,845	7,515	536	59,438	0	
	2011 Extractions								
	2012 Extractions								
	2013 Extractions								
	2014 Extractions								

1 Adjusted Right became effective on January 1, 1972; Base Right for Calendar Year 1971 is as shown in Table B-1 of the Judgment.
 Note: See Report of Watermaster, Volume 1A, Table 3; and Volume 5, Table 36A.

32

CHAPTER IV

**NATURAL SAFE YIELD OF THE
SAN BERNARDINO BASIN AREA AND
ADJUSTED RIGHTS OF PLAINTIFF EXPORTERS**

CHAPTER IV

NATURAL SAFE YIELD OF THE SAN BERNARDINO BASIN AREA AND ADJUSTED RIGHTS OF PLAINTIFF EXPORTERS

The Watermaster has determined the natural safe yield of the water supply accruing to the San Bernardino Basin Area at 232,100 acre-feet per annum from which the Adjusted Rights of Plaintiff exporters were also determined. Such determination of safe yield and Adjusted Rights of Plaintiff exporters was set forth in detail in Report of Watermaster, Volume 9, entitled *Determination of Natural Safe Yield of the San Bernardino Basin Area and Adjusted Rights of Plaintiff Exporters*.

The Adjusted Rights of Plaintiffs' extractions from the San Bernardino Basin Area, classified according to service areas and based on the natural safe yield of 232,100 acre-feet per annum have been summarized on the following table for ease of reference. The Adjusted Right of other than Plaintiffs was also based on the natural safe yield of the San Bernardino Basin Area and was determined to be 167,238 acre-feet. Such adjusted rights were not effective until January 1, 1972; therefore, the 1971 base rights for both Plaintiffs and other than Plaintiffs are based on the actual average annual extractions from the San Bernardino Basin Area during the five-year base period 1959-1963.

The Judgment provides for continuing jurisdiction of the Court in the following matters:

- 1) The hydrologic condition of any one or all of the separate basins described in this Judgment in order to determine from time to time the safe yield of the San Bernardino Basin Area, and
- 2) The adjusted rights of the Plaintiffs as required to comply with the provisions hereof with respect to changes in the natural safe yield of the San Bernardino Basin Area. If such changes occur, the Court shall adjudge that the adjusted rights and replenishment obligations of each party shall be changed proportionately to the base rights.

In order to provide a basis for future determination of safe yield, the Watermaster maintains a continuing program of collecting and analyzing current hydrologic data pertinent to the annual water supply to, and utilization of water from, the San Bernardino Basin Area.

Such data will be summarized and reported from time to time in subsequent supplemental reports of the Watermaster.

PLAINTIFF ADJUSTED RIGHTS
CLASSIFIED ACCORDING TO SERVICE AREA
(All Values in Acre-Feet)

Plaintiffs	Total Extractions in San Bernardino Basin Area	Delivery to San Bernardino Basin Area	Delivery to Colton Basin and Riverside Basin Area in San Bernardino County	Delivery to Areas Outside San Bernardino Valley
City of Riverside (including those rights acquired as successor to the Riverside Water Company and the Gage Canal Company)	52,199 2	1,427	1,230	49,542 2
Riverside Highland Water Company	4,294	0	2,449	1,845
Agua Mansa Water Company and Meeks & Daley Water Company	7,833	0	318	7,515
Regents of the University of California	536 2	0	0	536 2
TOTAL	64,862	1,427	3,997	59,438

1 Effective January 1, 1972.

2 The Adjusted Rights allocated to the City of Riverside and The Regents of The University of California were established at 52,169 and 566 acre-feet per annum respectively. On the basis of an amended recordation filing for the 1959-63 Base Period, the adjusted right for The Regents of the University of California was reduced to 536 acre-feet, and the City of Riverside adjusted right was increased to 52,199 acre-feet.

CHAPTER V

**EXTRACTIONS FROM COLTON BASIN AREA AND
RIVERSIDE BASIN AREA IN SAN BERNARDINO COUNTY**

CHAPTER V

EXTRACTIONS FROM THE COLTON BASIN AREA AND RIVERSIDE BASIN AREA IN SAN BERNARDINO COUNTY

For Use Outside San Bernardino Valley Municipal Water District

The extractions from the Colton Basin Area and that portion of the Riverside Basin Area within San Bernardino County for use outside San Bernardino Valley during the 2009 calendar year have been verified by the Watermaster as 378 acre-feet and 16,538 acre-feet, respectively. The individual work sheets for these determinations are included in Report of Watermaster, Volume 2-2009 (*Verified Extractions From the Colton Basin Area-Table 4*), Volume 3-2009 (*Verified Extractions From Riverside Basin Area Within San Bernardino County-Table 4*), and Volume 5-2009 (*Distribution of Extractions From the San Bernardino Basin Area, Colton Basin Area, and Riverside Basin Area for Use Outside the San Bernardino Valley Municipal Water District-Table 57*).

For Use Within San Bernardino Valley Municipal Water District

Provided minimum water surface elevations within the Colton Basin and that portion of Riverside Basin Area within San Bernardino County are maintained by San Bernardino Valley Municipal Water District, extractions from the Colton Basin Area and that portion of the Riverside Basin Area within San Bernardino County for use within San Bernardino Valley are not limited and therefore verification of such amounts are not specifically required by the Judgment. However, proper allocation of the total extractions from these areas for use on areas outside San Bernardino Valley necessitates the verification of these extractions. The individual work sheets for the 2009 verification and distribution of extractions are also included in Report of Watermaster, Volumes 2-2009, 3-2009 and 5-2009.

The extractions from the Colton Basin Area and the Riverside Basin Area in San Bernardino County for calendar years 1971 through 2009 are summarized in Tables 4 and 5 following.

TABLE NO. 4
 VERIFIED EXTRACTIONS FROM COLTON BASIN AREA
 BY SAN BERNARDINO AND RIVERSIDE COUNTY
 ENTITIES FOR USE WITHIN EACH COUNTY
 ANNUAL TOTALS
 (All Values in Acre-Feet)

Extractions for Calendar Years	Total from Basin	Extracted by San Bernardino County Entities	Extracted by Riverside County Entities			Base Right for Use in Riverside County	1
			Total	Used in San Bernardino County	Used in Riverside County		
Five-Year Base Period 1959-63 Avg.	11,731	2 8,235	2 3,496	115	3,381	3,381	
1971	11,388	2 8,363	2 3,025	248	2,777	3,381	
1972	10,414	7,532	2,882	271	2,611	3,381	
1973	7,844	6,982	862	247	615	3,381	
1974	8,906	7,169	1,737	273	1,464	3,381	
1975	11,083	6,821	4,262	389	3,873	3,381	
1976	11,558	2 8,605	2 2,953	270	2,683	3,381	
1977	8,777	6,061	2,716	447	2,269	3,381	
1978	7,663	6,430	1,233	338	895	3,381	
1979	7,194	5,224	1,970	288	1,682	3,381	
1980	5,681	2 5,610	2 71	0	71	3,381	
1981	6,348	6,175	173	0	173	3,381	
1982	6,499	5,450	1,049	68	981	3,381	
1983	4,735	2 4,603	2 132	37	95	3,381	
1984	8,987	7,441	1,546	206	1,340	3,381	
1985	10,149	7,142	3,007	763	2,244	3,381	
1986	10,035	7,651	2,384	784	1,600	3,381	
1987	13,175	11,054	2,121	564	1,557	3,381	
1988	13,552	11,453	2,099	392	1,707	3,381	
1989	14,103	2 11,799	2 2,304	299	2,005	3,381	
1990	17,571	2 15,551	2 2,020	368	1,652	3,381	
1991	14,323	12,282	2,041	206	1,835	3,381	
1992	16,750	15,068	1,682	227	1,455	3,381	
1993	14,977	14,581	396	0	396	3,381	
1994	15,813	2 14,652	2 1,161	95	1,066	3,381	
1995	17,308	2 16,693	2 615	126	489	3,381	
1996	17,040	2 16,385	2 655	78	577	3,381	
1997	14,498	2 13,276	2 1,222	81	1,141	3,381	
1998	10,972	2 10,689	2 283	32	251	3,381	
1999	12,564	2 11,430	2 1,134	222	912	3,381	
2000	13,123	2 12,837	2 286	2 73	2 213	2 3,381	

TABLE NO. 4
 VERIFIED EXTRACTIONS FROM COLTON BASIN AREA
 BY SAN BERNARDINO AND RIVERSIDE COUNTY
 ENTITIES FOR USE WITHIN EACH COUNTY
 ANNUAL TOTALS
 (All Values in Acre-Feet)

Extractions for Calendar Years	Total from Basin	Extracted by San Bernardino County Entities	Extracted by Riverside County Entities			Base Right for Use in Riverside County	1	
			Total	Used in San Bernardino County	Used in Riverside County			
Five-Year Base Period 1959-63 Avg.	11,731	2	8,235	2	3,496	115	3,381	3,381
2001	16,389	2	16,056	2	333	168	165	3,381
2002	19,161	2	17,766	2	1,395	116	1,279	3,381
2003	25,656	2	24,576	2	1,080	18	1,062	3,381
2004	24,346	2	24,167	2	179	7	172	3,381
2005	18,814	2	18,727	2	87	3	84	3,381
2006	17,566	2	17,154	2	412	0	412	3,381
2007	20,988	2	20,246	2	742	0	742	3,381
2008	20,658	2	19,719	2	939	0	939	3,381
2009	23,536		23,158		378	0	378	3,381
2010								
2011								
2012								
2013								
2014								
2015								

Note: See Report of Watermaster, Volume 2, Tables 4 & 5; and Volume 5, Table 38.

1 Extractions for use in Riverside County are limited to the verified extractions for the five-year Base Period 1959-63

2 Amount corrected during a subsequent year verification of extractions.

TABLE NO. 4
 VERIFIED EXTRACTIONS FROM COLTON BASIN AREA
 BY SAN BERNARDINO AND RIVERSIDE COUNTY
 ENTITIES FOR USE WITHIN EACH COUNTY
 FIVE-YEAR TOTALS
 (All Values in Acre-Feet)

Five-Year Period	Total from Basin	Extracted by San Bernardino County Entities	Extracted by Riverside County Entities			Base Right for Use in Riverside County 1
			Total	Used in San Bernardino County	Used in Riverside County	
Base Period						
1959-63	58,655	41,175	17,480	575	16,905	16,905
1971-75	49,635	36,867	12,768	1,428	11,340	16,905
1972-76	49,805	37,109	12,696	1,450	11,246	16,905
1973-77	48,168	35,638	12,530	1,626	10,904	16,905
1974-78	47,987	35,086	12,901	1,717	11,184	16,905
1975-79	46,275	33,141	13,134	1,732	11,402	16,905
1976-80	40,873	31,930	8,943	1,343	7,600	16,905
1977-81	35,663	29,500	6,163	1,073	5,090	16,905
1978-82	33,385	28,889	4,496	694	3,802	16,905
1979-83	30,457	27,062	3,395	393	3,002	16,905
1980-84	32,250	29,279	2,971	311	2,660	16,905
1981-85	36,718	30,811	5,907	1,074	4,833	16,905
1982-86	40,405	32,287	8,118	1,858	6,260	16,905
1983-87	47,081	37,891	9,190	2,354	6,836	16,905
1984-88	55,898	44,741	11,157	2,709	8,448	16,905
1985-89	61,014	49,099	11,915	2,802	9,113	16,905
1986-90	68,436	57,508	10,928	2,407	8,521	16,905
1987-91	72,724	62,139	10,585	1,829	8,756	16,905
1988-92	76,299	66,153	10,146	1,492	8,654	16,905
1989-93	77,724	69,281	8,443	1,100	7,343	16,905
1990-94	79,434	72,134	7,300	896	6,404	16,905
1991-95	79,171	73,276	5,895	654	5,241	16,905
1992-96	81,888	77,379	4,509	526	3,983	16,905
1993-97	79,636	75,587	4,049	380	3,669	16,905
1994-98	75,631	71,695	3,936	412	3,524	16,905
1995-99	72,382	68,473	3,909	539	3,370	16,905

TABLE NO. 4
 VERIFIED EXTRACTIONS FROM COLTON BASIN AREA
 BY SAN BERNARDINO AND RIVERSIDE COUNTY
 ENTITIES FOR USE WITHIN EACH COUNTY
 FIVE-YEAR TOTALS
 (All Values in Acre-Feet)

Five-Year Period	Total from Basin	Extracted by San Bernardino County Entities	Extracted by Riverside County Entities			Base Right for Use in Riverside County ¹
			Total	Used in San Bernardino County	Used in Riverside County	
Base Period						
1959-63	58,655	41,175	17,480	575	16,905	16,905
1996-00	68,197	64,617	3,580	486	3,094	16,905
1997-01	67,546	64,288	3,258	576	2,682	16,905
1998-02	72,209	68,778	3,431	611	2,820	16,905
1999-03	86,893	82,665	4,228	597	3,631	16,905
2000-04	98,675	95,402	3,273	382	2,891	16,905
2001-05	104,366	101,292	3,074	312	2,762	16,905
2002-06	105,543	102,390	3,153	144	3,009	16,905
2003-07	107,370	104,870	2,500	28	2,472	16,905
2004-08	102,372	100,013	2,359	10	2,349	16,905
2005-09	101,562	99,004	2,558	3	2,555	16,905
2006-10						
2007-11						
2008-12						
2009-13						
2010-14						
2011-15						

¹ Extractions for use in Riverside County are limited to the verified extractions for the five-year Base Period 1959-63.

Note: 5-year totals corrected to reflect any corrections on Table 4, Page 1a of 2 and Page 1b of 2

TABLE NO. 5
 VERIFIED EXTRACTIONS FROM RIVERSIDE BASIN AREA
 IN SAN BERNARDINO COUNTY
 BY SAN BERNARDINO AND RIVERSIDE COUNTY
 ENTITIES FOR USE WITHIN EACH COUNTY
 ANNUAL TOTALS
 (All Values in Acre-feet)

Extractions for Calendar Years	Total from Basin	Extracted by San Bernardino County Entities	Extracted by Riverside County Entities			Base Right for Use in Riverside County ¹
			Total	Used in San Bernardino County	Used in Riverside County	
Five-Year Base Period 1959-63 Avg.	33,729	9,609	24,120	3,035	21,085	21,085
1971	29,070	8,748	20,322	2,214	18,108	21,085
1972	28,148	7,963	20,185	1,597	18,588	21,085
1973	21,809	6,490	15,319	1,333	13,986	21,085
1974	21,881	6,899	14,982	1,399	13,583	21,085
1975	22,701	6,513	16,188	1,225	14,963	21,085
1976	24,705	6,898	17,807	1,666	16,141	21,085
1977	23,506	7,089	16,417	1,985	14,432	21,085
1978	17,216	6,261	10,955	1,900	9,055	21,085
1979	20,024	7,062	12,962	2,370	10,592	21,085
1980	18,533	5,932 ²	12,601 ²	3,410	9,191 ²	21,085
1981	23,611	6,811	16,800	3,733	13,067	21,085
1982	17,349 ²	5,409	11,940 ²	3,483 ²	8,457	21,085
1983	11,904 ²	5,204 ²	6,700 ²	2,925 ²	3,775	21,085
1984	17,161	5,648	11,513	1,953	9,560	21,085
1985	19,392 ²	6,048 ²	13,344	2,143	11,201	21,085
1986	17,337	7,401 ²	9,936 ²	1,245	8,691 ²	21,085
1987	15,803 ²	7,374 ²	8,429	717	7,712	21,085
1988	16,933 ²	7,235 ²	9,698 ²	773	8,925 ²	21,085
1989	25,557	7,781	17,776	1,619	16,157	21,085
1990	26,371	7,872	18,499	2,628	15,871	21,085
1991	28,011	6,472	21,539	2,984	18,555	21,085
1992	21,959 ²	5,652 ²	16,307	1,579	14,728	21,085
1993	21,866	5,428	16,438	1,735	14,703	21,085
1994	19,661	5,711	13,950	1,746	12,204	21,085
1995	23,865 ²	6,223 ²	17,642	1,696	15,946	21,085
1996	26,698 ²	11,986 ²	14,712	1,308 ²	13,404 ²	21,085
1997	30,284 ²	17,887 ²	12,397 ²	1,358 ²	11,039 ²	21,085
1998	33,116	22,112	11,004 ²	1,330 ²	9,674 ²	21,085
1999	35,482 ³	21,899 ³	13,583 ²	1,867 ²	11,716 ²	21,085
2000	36,124 ^{3,4}	23,634 ²⁻⁴	12,490 ²	1,121 ²	11,369 ²	21,085

TABLE NO. 5
 VERIFIED EXTRACTIONS FROM RIVERSIDE BASIN AREA
 IN SAN BERNARDINO COUNTY
 BY SAN BERNARDINO AND RIVERSIDE COUNTY
 ENTITIES FOR USE WITHIN EACH COUNTY
 ANNUAL TOTALS
 (All Values in Acre-feet)

Extractions for Calendar Years	Total from Basin	Extracted by San Bernardino County Entities	Extracted by Riverside County Entities			Base Right for Use in Riverside County ¹
			Total	Used in San Bernardino County	Used in Riverside County	
Five-Year Base Period 1959-63 Avg.	33,729	9,609	24,120	3,035	21,085	21,085
2001	31,423 ^{2,4}	21,029 ^{2,3}	10,394 ²	1,281 ²	9,113 ²	21,085
2002	28,042 ^{3,4}	13,926 ³	14,116	2,441	11,675	21,085
2003	27,648 ^{3,4}	16,713 ³	10,935	1,699 ²	9,236 ²	21,085
2004	24,779 ^{3,4}	15,558 ³	9,221	2,499	6,722	21,085
2005	29,447 ^{3,4}	18,177 ³	11,270	1,870	9,400	21,085
2006	30,045 ^{2,3}	16,037 ^{2,3}	14,008	1,139	12,869	21,085
2007	27,491 ³	16,963 ³	10,528	1,925	8,603	21,085
2008	30,678	16,353	14,325	1,447	12,878	21,085
2009	34,180	15,288	18,892	2,354	16,538	21,085
2010						
2011						
2012						
2013						
2014						
2015						

¹ Extractions for use in Riverside County are limited to the verified extractions for five-year Base Period 1959-63

² Amounts corrected during a subsequent year verification of extractions.

Note: See Report of Watermaster, Volume 3, Tables 4 & 5; and Volume 5, Table 54.

³ Roquet, Harry V. reopened and filed 10 years of previous extractions for well recordation 3601422.

⁴ Arrowhead Regional Medical Center, new well 3603947, backfiled on First Notice.

TABLE NO. 5
 VERIFIED EXTRACTIONS FROM RIVERSIDE BASIN AREA
 IN SAN BERNARDINO COUNTY
 BY SAN BERNARDINO AND RIVERSIDE COUNTY
 ENTITIES FOR USE WITHIN EACH COUNTY
 FIVE-YEAR TOTALS
 (All Values in Acre-Feet)

Five-Year Period	Total from Basin	Extracted by San Bernardino County Entities	Extracted by Riverside County Entities			Base Right for Use in Riverside County ¹
			Total	Used in San Bernardino County	Used in Riverside County	
Base Period						
1959-63	168,645	48,045	120,600	15,175	105,425	105,425
1971-75	123,609	36,613	86,996	7,768	79,228	105,425
1972-76	119,244	34,763	84,481	7,220	77,261	105,425
1973-77	114,602	33,889	80,713	7,608	73,105	105,425
1974-78	110,009	33,660	76,349	8,175	68,174	105,425
1975-79	108,152	33,823	74,329	9,146	65,183	105,425
1976-80	103,984	33,242	70,742	11,331	59,411	105,425
1977-81	102,890	33,155	69,735	13,398	56,337	105,425
1978-82	96,733	31,475	65,258	14,896	50,362	105,425
1979-83	91,421	30,418	61,003	15,921	45,082	105,425
1980-84	88,558	29,004	59,554	15,504	44,050	105,425
1981-85	89,417	29,120	60,297	14,237	46,060	105,425
1982-86	83,143	29,710	53,433	11,749	41,684	105,425
1983-87	81,597	31,675	49,922	8,983	40,939	105,425
1984-88	86,626	33,706	52,920	6,831	46,089	105,425
1985-89	95,022	35,839	59,183	6,497	52,686	105,425
1986-90	102,001	37,663	64,338	6,982	57,356	105,425
1987-91	112,675	36,734	75,941	8,721	67,220	105,425
1988-92	118,831	35,012	83,819	9,583	74,236	105,425
1989-93	123,764	33,205	90,559	10,545	80,014	105,425
1990-94	117,868	31,135	86,733	10,672	76,061	105,425
1991-95	115,362	29,486	85,876	9,740	76,136	105,425
1992-96	114,049	35,000	79,049	8,064	70,985	105,425
1993-97	122,374	47,235	75,139	7,843	67,296	105,425
1994-98	133,624	63,919	69,705	7,438	62,267	105,425
1995-99	149,445	80,107	69,338	7,559	61,779	105,425

TABLE NO. 5
 VERIFIED EXTRACTIONS FROM RIVERSIDE BASIN AREA
 IN SAN BERNARDINO COUNTY
 BY SAN BERNARDINO AND RIVERSIDE COUNTY
 ENTITIES FOR USE WITHIN EACH COUNTY
 FIVE-YEAR TOTALS
 (All Values in Acre-Feet)

Five-Year Period	Total from Basin	Extracted by San Bernardino County Entities	Extracted by Riverside County Entities			Base Right for Use in Riverside County ¹
			Total	Used in San Bernardino County	Used in Riverside County	
Base Period						
1959-63	168,645	48,045	120,600	15,175	105,425	105,425
1996-00	161,704	97,518	64,186	6,984	57,202	105,425
1997-01	166,429	106,561	59,868	6,957	52,911	105,425
1998-02	164,187	102,600	61,587	8,040	53,547	105,425
1999-03	158,719	97,201	61,518	8,409	53,109	105,425
2000-04	148,016	90,860	57,156	9,041	48,115	105,425
2001-05	141,339	85,403	55,936	9,790	46,146	105,425
2002-06	139,961	80,411	59,550	9,648	49,902	105,425
2003-07	139,410	83,448	55,962	9,132	46,830	105,425
2004-08	142,440	83,088	59,352	8,880	50,472	105,425
2005-09	151,841	82,818	69,023	8,735	60,288	105,425
2006-10						
2007-11						
2008-12						
2009-13						
2010-14						
2011-15						

¹ Extractions for use in Riverside County are limited to the verified extractions for the five-year Base Period 1959-63.

Note: 5-year totals corrected to reflect any corrections on Table 5, page 1 of 2.

Minimum Water Surface Elevations

Extractions from the Colton Basin Area and that portion of the Riverside Basin Area within San Bernardino County for use in San Bernardino Valley are not limited, provided that the average static water surface elevation as measured at wells numbered 1S/4W-21Q03S, 1S/4W-29H01S, and 1S/4W-29Q01S is not less than 822.04 feet, as set forth in the Judgment. This elevation is determined each year by averaging the lowest static water level occurring in each of the three wells at or near the same time of the year.

A map showing the locations and hydrographs of the 2010 static water surface elevations in the three key wells are shown on the following pages. Data pertinent to the key wells as well as the records of historic water surface measurements are included in Report of Watermaster, Volume 8-2009 entitled *Ground Water Surface Elevations in Wells Numbered 1S/4W-21Q03S, 1S/4W-29H01S, and 1S/4W-29Q01S Located Within the Colton Basin Area and Riverside Basin Area in San Bernardino County through December, 2010.*

The lowest static water surface elevation measured in each of the three wells during 2010 is as follows:

Well Number	Date of Measurement	Elevation of Water Surface
1S/4W-21Q03S (Johnson #1)	Dec. 1, 2010	871.18
1S/4W-29H01S (Flume #2)	Nov. 3, 2010	836.29
1S/4W-29Q01S (Flume #5)	Nov. 3, 2010	<u>829.15</u>
	Average	845.54

Thus, the lowest average fall water surface elevation for calendar year 2010 is 0.44 feet higher than the 2009 average of 845.10 and 23.50 feet higher than the 1963 average of 822.04.

MAP NO. 2 LOCATION OF WELLS

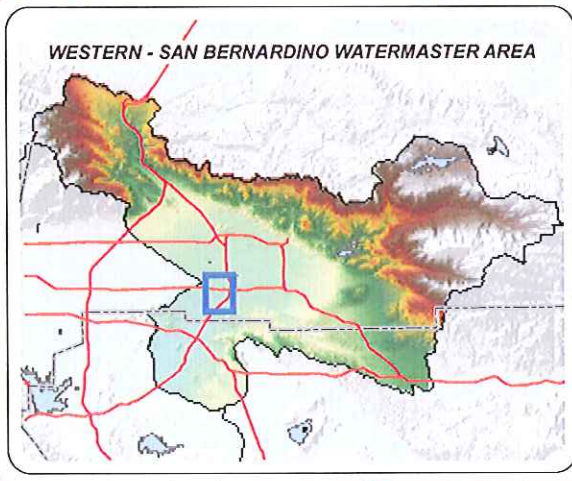
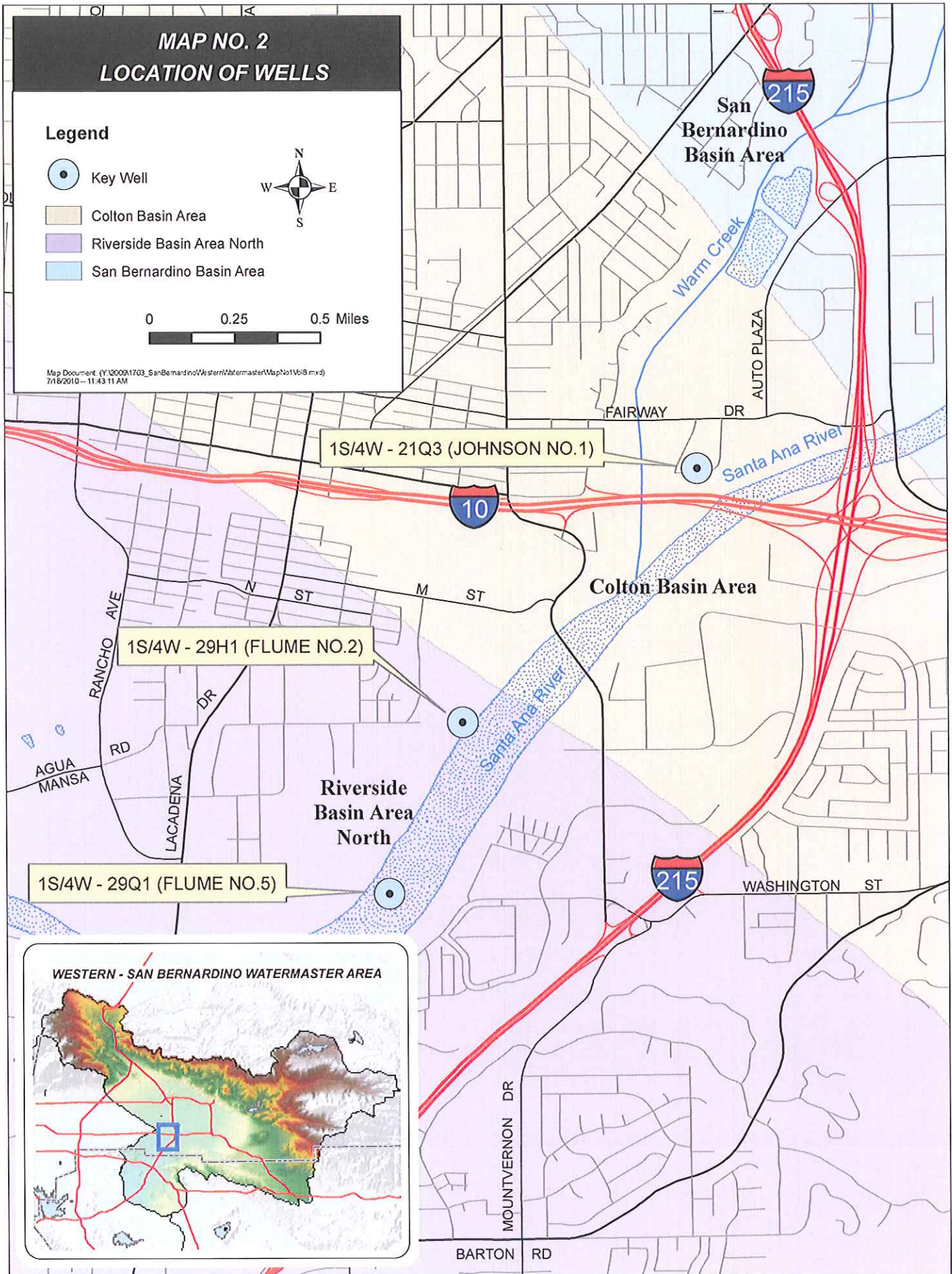
Legend

-  Key Well
-  Colton Basin Area
-  Riverside Basin Area North
-  San Bernardino Basin Area



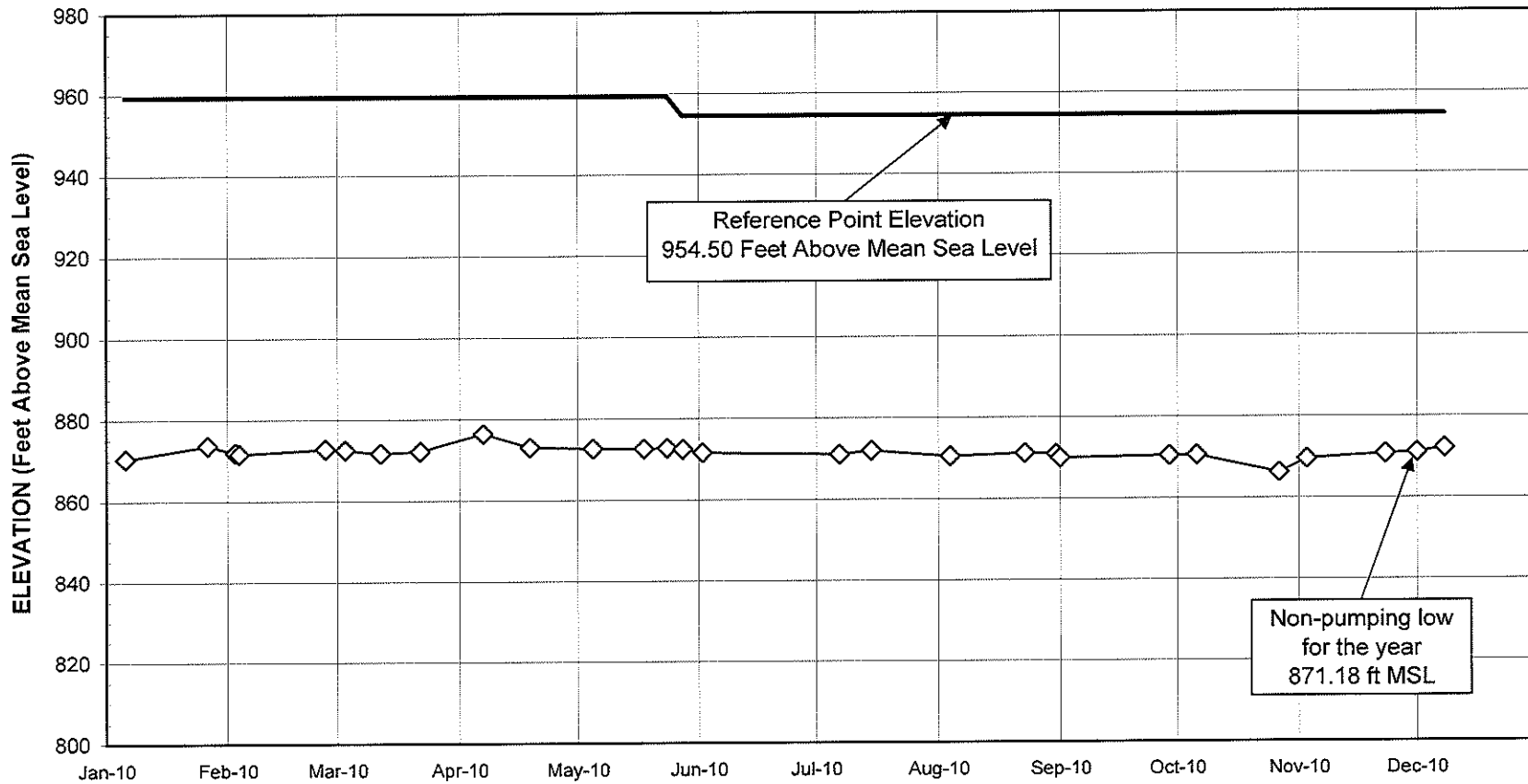
0 0.25 0.5 Miles

Map Document: (Y:\00091703_SanBernardino\Western\Watermaster\MapNo1\618.mxd)
7/16/2010 - 11:43:11 AM



**FIGURE 1
GROUNDWATER SURFACE ELEVATIONS
1S/4W-21Q03S
JOHNSON NO. 1 WELL
2010**

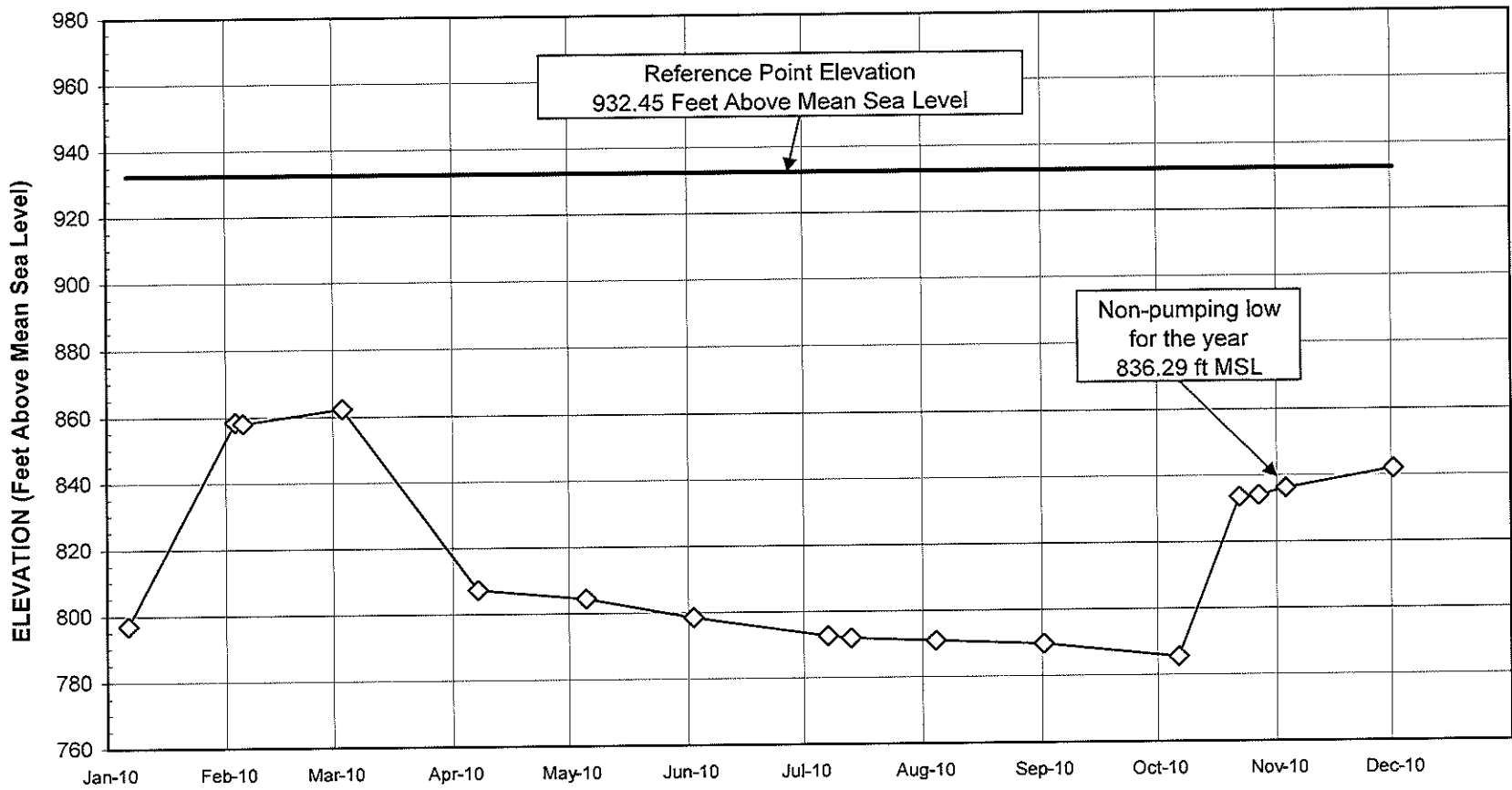
46



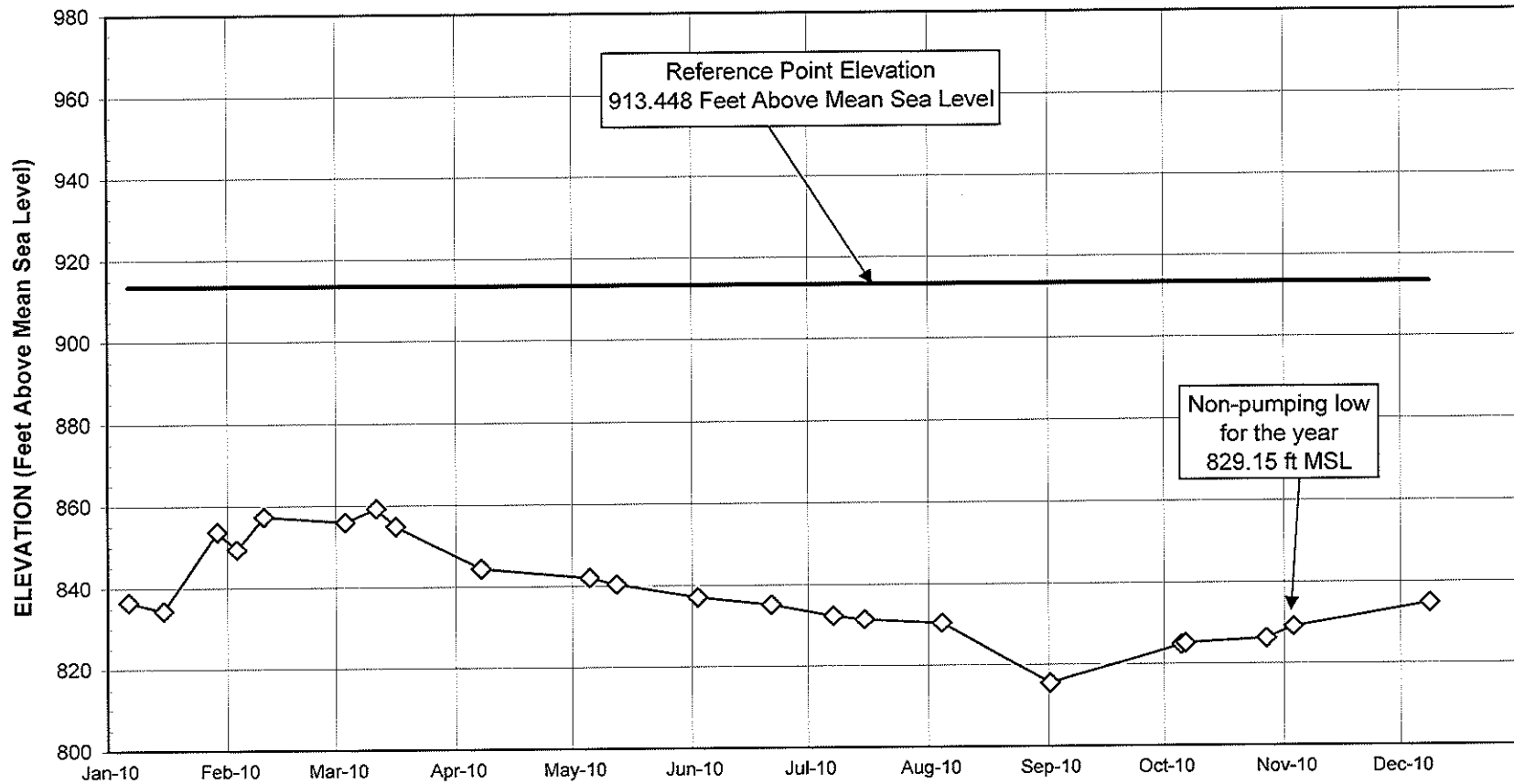
Non-pumping low
for the year
871.18 ft MSL

Reference Point Elevation
954.50 Feet Above Mean Sea Level

**FIGURE 2
GROUNDWATER SURFACE ELEVATIONS
1S/4W-29H01S
FLUME NO. 2 WELL
2010**



**FIGURE 3
GROUNDWATER SURFACE ELEVATIONS
1S/4W-29Q01S
FLUME NO. 5 WELL
2010**



CHAPTER VI

**EXTRACTIONS FROM THE PORTION OF
RIVERSIDE BASIN AREA IN RIVERSIDE COUNTY
WHICH IS TRIBUTARY TO THE RIVERSIDE NARROWS**

CHAPTER VI

EXTRACTIONS FROM THE PORTION OF RIVERSIDE BASIN AREA IN RIVERSIDE COUNTY WHICH IS TRIBUTARY TO THE RIVERSIDE NARROWS

Extractions

The extractions from that portion of the Riverside Basin area in Riverside County which is tributary to the Riverside Narrows for use within Riverside County for calendar year 2009 have been verified by the Watermaster as 35,519 acre-feet. The individual work sheets are included in Report of Watermaster, Volume 4-2009 entitled *Verified Extractions from Riverside Basin Area Within Riverside County* and are summarized in Table No. 6 following.

TABLE NO. 6
 VERIFIED EXTRACTIONS FROM RIVERSIDE BASIN AREA
 IN RIVERSIDE COUNTY
 FOR USE IN RIVERSIDE COUNTY
 ANNUAL TOTALS
 (All Values in Acre-Feet)

Calendar Year	Total Verified Extractions	Base Right for Use in Riverside County
Five-Year Base Period 1959-63 Avg.	29,633	29,633
1971	30,942 1	29,633
1972	37,804 2	29,633
1973	33,094	29,633
1974	38,304 2	29,633
1975	28,285	29,633
1976	31,565	29,633
1977	28,226	29,633
1978	24,878 3	29,633
1979	25,512	29,633
1980	30,206 3	29,633
1981	30,243 3	29,633
1982	20,365 3	29,633
1983	22,991 3	29,633
1984	32,466 3	29,633
1985	23,970 3	29,633
1986	24,549 3	29,633
1987	24,202 3	29,633
1988	24,470 3	29,633
1989	34,417 3	29,633
1990	31,760 3	29,633
1991	29,364 3	29,633
1992	26,538 3	29,633
1993	26,505	29,633
1994	28,125	29,633
1995	22,580	29,633
1996	24,906	29,633
1997	29,128	29,633
1998	28,558	29,633
1999	33,837	29,633
2000	32,263	29,633

TABLE NO. 6
 VERIFIED EXTRACTIONS FROM RIVERSIDE BASIN AREA
 IN RIVERSIDE COUNTY
 FOR USE IN RIVERSIDE COUNTY
 ANNUAL TOTALS
 (All Values in Acre-Feet)

Calendar Year	Total Verified Extractions	Base Right for Use in Riverside County
Five-Year Base Period		
1959-63 Avg.	29,633	29,633
2001	33,656	29,633
2002	31,013	29,633
2003	30,957	29,633
2004	35,530	29,633
2005	32,737	29,633
2006	31,026	29,633
2007	38,237 ^{2,3}	29,633
2008	31,205 ³	29,633
2009	35,519	29,633
2010		
2011		
2012		
2013		
2014		
2015		

1 Amount corrected during verification of 1972 extractions.

2 These extractions exceeded the Base Right plus peaking allowance of 20% by 2,244 acre-feet in 1972, 2,744 acre-feet in 1974 and 2,677 acre-feet in 2007.

3 Amount corrected during subsequent year verification of extractions.

Note: See Report of Watermaster, Volume 4, Table 4.

TABLE NO. 6
 VERIFIED EXTRACTIONS FROM RIVERSIDE BASIN AREA
 IN RIVERSIDE COUNTY
 FOR USE IN RIVERSIDE COUNTY
 FIVE-YEAR TOTALS
 (All Values in Acre-Feet)

Calendar Year	Total Verified Extractions	Base Right for Use in Riverside County
Five-Year Base Period		
1959-63 Avg.	148,165	148,165
1971-75	168,429	148,165
1972-76	169,052	148,165
1973-77	159,474	148,165
1974-78	151,258	148,165
1975-79	138,466	148,165
1976-80	140,387	148,165
1977-81	139,065	148,165
1978-82	131,204	148,165
1979-83	129,317	148,165
1980-84	136,271	148,165
1981-85	130,035	148,165
1982-86	124,341	148,165
1983-87	128,178	148,165
1984-88	129,657	148,165
1985-89	131,608	148,165
1986-90	139,398	148,165
1987-91	144,213	148,165
1988-92	146,549	148,165
1989-93	148,584	148,165
1990-94	142,292	148,165
1991-95	133,112	148,165
1992-96	128,654	148,165
1993-97	131,244	148,165
1994-98	133,297	148,165
1995-99	139,009	148,165

TABLE NO. 6
 VERIFIED EXTRACTIONS FROM RIVERSIDE BASIN AREA
 IN RIVERSIDE COUNTY
 FOR USE IN RIVERSIDE COUNTY
 FIVE-YEAR TOTALS
 (All Values in Acre-Feet)

Calendar Year	Total Verified Extractions	Base Right for Use in Riverside County
<hr/>		
Five-Year Base Period		
1959-63 Avg.	148,165	148,165
<hr/>		
1996-00	148,692	148,165
1997-01	157,442	148,165
1998-02	159,327	148,165
1999-03	161,726	148,165
2000-04	163,419	148,165
2001-05	163,893	148,165
2002-06	161,263	148,165
2003-07	168,487	148,165
2004-08	168,735	148,165
2005-09	168,724	148,165
2006-10		
2007-11		
2008-12		
2009-13		
2010-14		
2011-15		

Note: 5-year totals corrected to reflect any corrections on Table 6, page 1 of 2.

Return Flows

The Judgment provides for additional replenishment by Western if the urbanization of the Riverside Basin results in a diminution of the return flow accruing from the extractions described above and which would have otherwise accrued to the rising water at Riverside Narrows. The extent of such diminution is determined by the permanent reduction in the irrigated areas within the various water service organizations delivering water to the areas as compared to the areas served at the time the Judgment was entered. To the extent that such reduction causes an increase in the urban uses requiring sewage disposal through the Riverside Treatment Plant (the effluent which bypasses the Riverside Narrows), Western may, from time to time, be required to provide replenishment. Such irrigated acreages in the Riverside Basin Area in Riverside County at the time the Judgment was entered, from which return flow was tributary to Riverside Narrows, are set forth in Table D-5 of Appendix "D" of the Judgment and are as follows:

IRRIGATED ACREAGE IN RIVERSIDE BASIN AREA
IN RIVERSIDE COUNTY PRESENTLY TRIBUTARY TO
RIVERSIDE NARROWS WHICH UPON CONVERSION
TO URBAN USES REQUIRING SEWAGE DISPOSAL
THROUGH THE RIVERSIDE TREATMENT PLANT WILL
BE DISCHARGED TO THE RIVER BELOW
RIVERSIDE NARROWS

Entity Serving Acreage	Acres
Gage Canal Company	1,752
Alta Mesa Water Company	65
East Riverside Water Company	926
Riverside Highland Water Company	<u>1,173</u>
TOTAL	3,916

The service areas of the companies listed in Table D-5 were investigated. Field investigation was not completed during this time period.

The number of dwelling units connected to the City of Riverside wastewater disposal system and a discharge unit factor of 0.22 acre-feet per year per dwelling unit was used to determine the wastewater discharged to the river from the converted lands. These data have been summarized for the years 2005 through 2009 and are shown on Table No. 7.

TABLE NO. 7
 REDUCTION IN RETURN FLOW CONTRIBUTING TO BASE FLOW
 AT RIVERSIDE NARROWS
 RESULTING FROM CONVERSION OF AGRICULTURAL USES
 OF WATER TO DOMESTIC USES CONNECTED TO A SEWAGE SYSTEM
 DISCHARGING TO THE RIVER BELOW RIVERSIDE NARROWS
 (All Values in Acre-Feet)

Calendar Year	Gage Canal	Alta Mesa	East Riverside	Riverside Highland	Total
2005	257	38	284	0	579
2006	257	38	284	0	579
2007	257	38	284	0	579
2008	257	38	284	0	579
2009	257	38	284	0	579
<hr/>					
TOTAL 2005-09	1,285	190	1,420	0	2,895

Table No. 7 shows that in 2009 the reduction in return flow contributing to Base Flow at Riverside Narrows resulting from the conversion of land from agricultural use to urban uses in the Riverside Basin Area was 579 acre-feet. Western's obligation associated with the land use conversion and resulting replenishment requirements are shown on summary Tables 16 (page 3 of 3) and 18.

CHAPTER VII

**EXTRACTIONS FROM THE SAN BERNARDINO BASIN
AREA,
COLTON BASIN AREA, AND RIVERSIDE BASIN AREA
FOR USE WITHIN WESTERN ON LANDS THAT ARE NOT
TRIBUTARY TO THE RIVERSIDE NARROWS**

CHAPTER VII

EXTRACTIONS FROM THE SAN BERNARDINO BASIN AREA, COLTON BASIN AREA AND RIVERSIDE BASIN AREA FOR USE WITHIN WESTERN ON LANDS THAT ARE NOT TRIBUTARY TO THE RIVERSIDE NARROWS

The extractions from the San Bernardino, Colton and Riverside Basin Areas which were delivered for use within Western on lands not tributary to the Riverside Narrows during calendar year 2009 were verified by the Watermaster to be 32,796 acre-feet. Said amount is summarized by entity on Table No. 8.

The detailed work sheets for this determination are contained in Report of Watermaster, Volume 6-2009, entitled *Verified Extractions from the San Bernardino Basin Area, Colton Basin Area, and Riverside Basin Area for Use Within Western on Lands Not Tributary to the Riverside Narrows*.

TABLE NO. 8
 VERIFIED EXTRACTIONS FROM
 THE SAN BERNARDINO BASIN AREA,
 THE COLTON BASIN AREA, AND THE RIVERSIDE BASIN AREA
 FOR USE WITHIN WESTERN ON LANDS THAT ARE NOT TRIBUTARY
 TO THE RIVERSIDE NARROWS
 (All Values in Acre-Feet)

Entities Within WMWD	Annual 1959-63 Average	Calendar Years				
		2005 Verified Delivery	2006 Verified Delivery	2007 Verified Delivery	2008 Verified Delivery	2009 Verified Delivery
City of Riverside, including Irrigation Division water extracted by the Gage Canal Company and former Riverside Water Company	23,836	35,208	36,035	35,456	35,057	32,004
Meeks & Daley Water Company, Agua Mansa Water Company, and Temescal Water Company, including water received from City of Riverside	13,229	11	10	10	9	9
Extractions delivered by West Riverside Canal received from Twin Buttes Water Company, La Sierra Water Company, Agua Mansa Water Company, Salazar Water Company, West Riverside 350 Inch Water Company, and Jurupa Water Company	4,903	487	515	563	575	533
Jurupa Community Services District	531	0	0	0	0	0
Rubidoux Community Services District	36	250	250	250	250	250
TOTAL	42,535	35,956	36,810	36,279	35,891	32,796

Note: See Report of Watermaster, Volume 6, Table A.

CHAPTER VIII

**VERIFICATION OF EXTRACTIONS FROM THE
SAN BERNARDINO BASIN AREA AND COLTON BASIN
AREA
WITHIN THE SAN BERNARDINO VALLEY MUNICIPAL
WATER DISTRICT FOR USE ON LANDS NOT WITHIN
WESTERN
NOR TRIBUTARY TO THE RIVERSIDE NARROWS**

CHAPTER VIII

VERIFICATION OF EXTRACTIONS FROM THE SAN BERNARDINO BASIN AREA AND COLTON BASIN AREA WITHIN THE SAN BERNARDINO VALLEY MUNICIPAL WATER DISTRICT FOR USE ON LANDS NOT WITHIN WESTERN NOR TRIBUTARY TO THE RIVERSIDE NARROWS

Deliveries to Chino Basin

The extractions from the Colton and San Bernardino Basin Areas which were delivered for use on lands not within Western nor tributary to the Riverside Narrows, within the Chino Basin, during calendar year 2009 were verified by the Watermaster to be 24,308 acre-feet. Said amount is summarized by entity on Table No. 9.

The detailed work sheets for this determination are contained in Report of Watermaster, Volume 7-2009, entitled *Verification of Extractions from the San Bernardino Basin Area and Colton Basin Area Within the San Bernardino Valley Municipal Water District for Use on Lands Not Within Western Nor Tributary to the Riverside Narrows*.

Deliveries to Areas Other Than Chino Basin

Paragraph X of the Judgment also provides for replenishment by San Bernardino Valley to the extent exports are made from the San Bernardino Basin Area for use in the Yucaipa, San Timoteo, Oak Glen, and Beaumont Basins.

The results of the verification of the base period production from the San Bernardino Basin Area indicated that such exports were not made during the five calendar years ending with 1963. The verification of production for the 2009 calendar year indicated that during 2009, no water was exported to the Yucaipa, San Timoteo, Oak Glen or Beaumont Basins. During calendar year 2008, San Bernardino Valley

delivered 102 acre-feet of water from the San Bernardino Basin Area into The Metropolitan Water District of Southern California Inland Feeder Project during the startup testing of the Central Feeder Groundwater Banking/Conjunctive Use Project.

TABLE NO. 9
 VERIFIED EXTRACTIONS FROM THE
 SAN BERNARDINO BASIN AREA AND COLTON BASIN AREA
 WITHIN THE SAN BERNARDINO VALLEY MUNICIPAL WATER DISTRICT
 FOR USE ON LANDS NOT WITHIN WESTERN
 NOR TRIBUTARY TO RIVERSIDE NARROWS
 (All Values in Acre-Feet)

Entities	Annual 1959-63 Average		Calendar Years								
			2005 Verified Delivery		2006 Verified Delivery		2007 Verified Delivery		2008 Verified Delivery		2009 Verified Delivery
Fontana Union Water Company	10,170	1	18,709	3	24,050	3	19,083		20,389		15,223
West Valley Water District (formerly WSBCWD)	1,806		7,938	3	6,590	3	8,190		8,189		7,374
City of Rialto	551	1	912	3	1,114	3	1,145		1,657		1,711
Subtotal (Delivery to Chino Basin)	12,527		27,559		31,754		28,418		30,235		24,308
San Bernardino Valley Municipal Water District 2	0		0		0		0		102		0
Subtotal (Delivery to areas other than Chino Basin)	0		0		0		0		102		0
TOTAL	12,527	1	27,559	3	31,754	3	28,418		30,337		24,308

1 Amount corrected during verification of 1973 deliveries.

2 Water diverted from Mill Creek and delivered to Yucaipa Basin and water pumped through Central Feeder Project into Inland Feeder Project.

3 Amount corrected during verification of 2007 deliveries.

Note: See Report of Watermaster, Volume 7, Table B.

CHAPTER IX

**ANNUAL ACCOUNTING OF EXTRACTIONS,
DELIVERIES, AND REPLENISHMENT OBLIGATIONS**

CHAPTER IX

ANNUAL ACCOUNTING OF EXTRACTIONS, DELIVERIES, AND REPLENISHMENT OBLIGATIONS

The Judgment requires the annual determination of extractions from the San Bernardino, Colton, and Riverside Basin Areas by Plaintiffs as well as Non-Plaintiffs, and further requires that a determination be made as to that portion of such extractions delivered to each of the service areas tributary to the Riverside Narrows as well as the deliveries to those areas not tributary to the Riverside Narrows. A comparison of the annual extractions and deliveries with the verified five-year Base Period amounts provides the basis for the annual accounting of replenishment obligations, if any, which accrue by reason of production or deliveries in excess of such amounts.

Plaintiffs' Extractions from San Bernardino Basin Area

The Judgment specifically defines the Adjusted Right of the City of Riverside, Gage Canal Company, Riverside Highland Water Company, Agua Mansa Water Company & Meeks and Daley Water Company, and the Regents of University of California to produce water from the San Bernardino Basin Area for use in three specific service areas. These rights, expressed in terms of the five-year total allowable production and the maximum allowable production in any one year, are shown on Tables 10 through 13. Tables 10 through 13 also show the actual extractions for use by the Plaintiffs in the specific service areas.

In accordance with paragraph VI(b)6 of the Judgment, San Bernardino Valley and Western have entered into agreements on December 22, 1981, February 25, 1985, and August 21, 1985 which provide for additional extraction and exportation of water from the San Bernardino Basin Area. The 1981 agreement and its amendments provide

for the City of Riverside, Riverside Highland, Agua Mansa Water Company & Meeks and Daley Water Company, and the Regents of University of California to extract and export up to 17,500 acre-feet per year of additional water from the San Bernardino Basin Area. The agreement and amendments also set forth certain payment provisions for such additional extractions and requires certification to the Watermaster that such provisions have been met. The footnotes on Table 10 indicate the amounts of water extracted by the Plaintiff Entities in calendar years 1981, 1983, 1984, 1985, 1986, 1987, 1988, 1991, 1992, 1993, 1994, 1995, 1996, 1997, 1998, 1999, 2000, 2001, 2002, and 2004.

Non-Plaintiffs' Extractions from San Bernardino Basin Area

The Judgment provides that the Non-Plaintiffs as a group can produce a specific amount of water from the San Bernardino Basin Area without incurring an obligation to replenish the basin with imported water. During the period 2005 through 2009, the Non-Plaintiffs' production exceeded the Adjusted Right. (See Table 17)

A comparison of Adjusted Rights plus additional water made available by agreement to actual production by Plaintiffs and Non-Plaintiffs for the period 2005 through 2009 is as follows:

	Calendar Years 2005-09		
	Allowable Extractions	Actual Extractions	Difference
Plaintiffs	323,410	293,191	(30,219)
Non-Plaintiffs	<u>836,190</u>	<u>954,608</u>	<u>118,418</u>
	1,159,600	1,247,799	88,199

(All values in acre-feet)

Exports to Areas Not Tributary to Riverside Narrows

The Judgment limits the amount of water that can be extracted from the various basins for use on lands that are not tributary to the Riverside Narrows. Western and San Bernardino Valley are responsible for any obligation that may result from new exports to these nontributary lands located in Riverside County and San Bernardino County, respectively.

Tables 14 and 15 indicate the Adjusted Right and actual export for use on lands in Riverside County and San Bernardino County not tributary to the Riverside Narrows. Table 14 shows that during the period 2005 through 2009 the export by entities within Western was 34,943 acre-feet less than the Base Right. Table 15 shows that exports from San Bernardino Valley for use in San Bernardino County exceeded the Base Right for the period 1971 through 2009 by 453,855 acre-feet. The obligation of San Bernardino Valley resulting from this New Export is shown on Table 17.

The 1981 and 1985 agreements regarding extraction of additional water provide that the provisions of the Judgment related to export to areas not tributary to the Riverside Narrows shall not apply to additional water. Therefore, the additional water pumped by the City of Riverside in 1985, 1986, 1987, 1988, 1991, 1992, 1993, 1994, 1995, 1996, 1997, 1998, 1999, 2000, 2001, 2002, and 2004 has been excluded from amounts of export shown on Table 14. The additional water extracted by Non-Plaintiffs in 1985, 1987, 1988, 1992, 1993, 1994, 1995, 1996, 1997, 1998, 1999, 2000, 2001, 2002, and 2004 has not been excluded from the amount of export shown on Table 15; however, 10,681 acre-feet in 1985, 5,263 acre-feet in 1987, 14,187 acre-feet in 1988, 5,675 acre-feet in 1992, 11,134 acre-feet in 1993, 18,013 acre-feet in 1994, 14,993 acre-feet in 1995, 18,013 acre-feet in 1996, and 17,241 acre-feet of the 18,013 acre-feet in 1997, 18,013 acre-feet in 1998, 17,331 of the 27,994 acre-feet in 1999, 13,703 of the 20,428 acre-feet in 2000, 9,864 acre-feet in 2001, 11,259 acre-feet in 2002 and

11,222 acre-feet in 2004 of additional water extracted by Non-Plaintiffs have been excluded from the computation of new export on Table 17.

Summary of Western's Credits and Obligations

Table 16, Pages 1 of 3, 2 of 3, and 3 of 3, summarize Western's credits and obligations in the Colton Basin Area, Riverside Basin Area in San Bernardino County and Riverside Basin Area in Riverside County. The net accumulated credit for Colton Basin Area during the period 1971 through 2009 is 85,997 acre-feet as shown on Table 16, page 1 of 3. The net accumulated credit for Riverside Basin Area in San Bernardino County during the period 1971 through 2009 is 349,888 acre-feet as shown on Table 16, page 2 of 3. The net accumulated credit for Riverside Basin Area in Riverside County during the period 1971 through 2009 is 21,495 acre-feet as shown on Table 16, page 3 of 3.

Western and San Bernardino Valley have implemented paragraphs VI(b) 6 and XV (a) of the Judgment with respect to the importation by Western of water from the State Water Project for replenishment of the San Bernardino Basin Area. Under these provisions of the Judgment, and by agreement with the San Bernardino Valley Municipal Water District, Western began in 2004 to acquire from MWDSC water imported from the State Water Project for replenishment of the San Bernardino Basin Area. It is anticipated that this will be a continuing program, and Tables 3, 17A, and 18 have been added or modified to account for such replenishment and extractions. The accumulated excess of replenishment over extractions shall be shown as a Net Credit, and Western shall have the right to extract its Net Credit, or any portion thereof, at any future time, or transfer such right to any plaintiff in this action, to be extracted in addition to any other rights such transferee may have. To the extent permitted by agreement with San Bernardino Valley, replenishment may be made to offset prior extractions, and shall be shown in the appropriate tables as a Net Obligation.

Summary of San Bernardino Valley's Credits and Obligations

Table 17 summarizes San Bernardino Valley's credit and obligations in the San Bernardino, Colton and Riverside Basins. Paragraph VI of the Judgment entitled *San Bernardino Basin Area Rights and Replenishment* states in part that:

San Bernardino Valley shall also receive credit against any future replenishment obligations for all replenishment which it provides in excess of that required herein, and for any amounts which may be extracted without replenishment obligation, which in fact are not extracted.

The Judgment provides that San Bernardino Valley can carry forward to the current five-year period credits accumulated prior thereto. Obligations incurred by San Bernardino Valley have also been carried forward to the current five-year period. Accordingly the accumulated values shown on Tables 15 and 17 include amounts accumulated prior to 2005.

As indicated previously, the actual extractions from the San Bernardino Basin Area were greater than the Adjusted Right during the period 2005 through 2009. The actual extractions for 2009 exceeded the annual Adjusted Right; therefore, the extraction credit for 2009 was 0 as shown on Table 17. San Bernardino Valley receives credit for imported water that is used for replenishment in the San Bernardino Basin Area as previously discussed. San Bernardino Valley receives credit for Return Flows from Excess Extractions delivered within the SBBA, and from Direct Delivery of imported water within the SBBA. Accumulated credits for such replenishment, under-extraction, and return flows through 2009 total 460,129 acre-feet.

The accumulated obligation resulting from Excess Extractions and New Export during the period 1971 through 2009 is 242,855 acre-feet as shown on Table 17.

In summary, Table 17 shows that at the end of the five-year period 2005 through 2009 San Bernardino Valley's accumulated credits exceeded its accumulated obligations by 217,270 acre-feet.

Chapter V indicates that extractions in the Colton Basin Area and Riverside Basin Area within San Bernardino County for use in San Bernardino Valley are not limited provided that San Bernardino Valley maintains a specified minimum static water surface elevation in these Basins. During the five-year period 2005 through 2009 the actual water surface elevation remained higher than the specified minimum; therefore, no additional water is required for maintenance of these Basins.

Replenishment Requirements

Table 18 summarizes the accumulated credits and obligations of both Western and San Bernardino Valley. The credits exceeded the obligations for Western during the five-year period 2005 through 2009.

In summary, Table 18 shows that Western is not required to provide additional replenishment for obligations incurred during the five-year period 2005 through 2009.

This page intentionally left blank.

TABLE NO. 10
 ANNUAL ACCOUNTING OF EXTRACTIONS FROM THE SAN BERNARDINO BASIN AREA
 AND DELIVERIES TO EACH SERVICE AREA BY THE CITY OF RIVERSIDE
 (INCLUDING THOSE RIGHTS ACQUIRED AS SUCCESSOR TO THE
 RIVERSIDE WATER COMPANY AND THE GAGE CANAL COMPANY)
 ANNUAL TOTALS
 (All Quantities in Acre-Feet)

Calendar Year	Verified Extractions from the San Bernardino Basin Area			Delivery to San Bernardino Basin Area			Delivery to Colton Basin and Riverside Basin Areas in San Bernardino County			Delivery to Areas Outside San Bernardino Valley		
	Adjusted Right	Maximum Allowable	Actual	Adjusted Right	Maximum Allowable	Actual	Adjusted Right	Maximum Allowable	Actual	Adjusted Right	Maximum Allowable	Actual
1971	53448	69,482	53,882	1,462	1,901	98	1,260	1,638	669	50,726	65,944	53,115
1972	52199	67,859	45,694	1,427	1,855	85	1,230	1,599	547	49,542	64,405	45,062
1973	52199	67,859	43,022	1,427	1,855	156	1,230	1,599	512	49,542	64,405	42,354
1974	52199	67,859	43,367	1,427	1,855	0	1,230	1,599	550	49,542	64,405	42,817
1975	52199	67,859	47,962	1,427	1,855	0	1,230	1,599	498	49,542	64,405	47,464
1976	52199	67,859	51,374	1,427	1,855	0	1,230	1,599	523	49,542	64,405	50,851
1977	52199	67,859	50,999	1,427	1,855	0	1,230	1,599	346	49,542	64,405	50,653
1978	52199	67,859	45,384	1,427	1,855	646	1,230	1,599	301	49,542	64,405	44,437
1979	52199	67,859	52,377	1,427	1,855	0	1,230	1,599	415	49,542	64,405	51,962
1980	52199	67,859	50,756	1,427	1,855	383	1,230	1,599	0	49,542	64,405	50,373
1981	52199	67,859	52,157	1,427	1,855	724	1,230	1,599	0	49,542	64,405	51,433
1982	52199	67,859	49,599	1,427	1,855	162	1,230	1,599	0	49,542	64,405	49,437
1983	52199	67,859	46,064	1,427	1,855	335	1,230	1,599	0	49,542	64,405	45,729
1984	52199	67,859	58,906	1,427	1,855	32	1,230	1,599	0	49,542	64,405	58,874
1985	52199	67,859	63,073	1,427	1,855	59	1,230	1,599	0	49,542	64,405	63,014
1986	52199	67,859	59,979	1,427	1,855	437	1,230	1,599	0	49,542	64,405	59,542
1987	52199	67,859	57,841	1,427	1,855	334	1,230	1,599	0	49,542	64,405	57,507
1988	52199	67,859	64,512	1,427	1,855	815	1,230	1,599	0	49,542	64,405	63,697
1989	52199	67,859	50,784	1,427	1,855	28	1,230	1,599	0	49,542	64,405	50,756
1990	52199	67,859	47,637	1,427	1,855	19	1,230	1,599	0	49,542	64,405	47,618
1991	52199	67,859	52,909	1,427	1,855	155	1,230	1,599	0	49,542	64,405	52,754
1992	52199	67,859	50,239	1,427	1,855	203	1,230	1,599	0	49,542	64,405	50,036
1993	52199	67,859	52,114	1,427	1,855	-108	1,230	1,599	0	49,542	64,405	52,222
1994	52199	67,859	60,447	1,427	1,855	46	1,230	1,599	0	49,542	64,405	60,401
1995	52199	67,859	55,392	1,427	1,855	99	1,230	1,599	0	49,542	64,405	55,293

69

TABLE NO. 10
 ANNUAL ACCOUNTING OF EXTRACTIONS FROM THE SAN BERNARDINO BASIN AREA
 AND DELIVERIES TO EACH SERVICE AREA BY THE CITY OF RIVERSIDE
 (INCLUDING THOSE RIGHTS ACQUIRED AS SUCCESSOR TO THE
 RIVERSIDE WATER COMPANY AND THE GAGE CANAL COMPANY)
 ANNUAL TOTALS
 (All Quantities in Acre-Feet)

Calendar Year	Verified Extractions from the San Bernardino Basin Area					Delivery to San Bernardino Basin Area					Delivery to Colton Basin and Riverside Basin Areas in San Bernardino County				Delivery to Areas Outside San Bernardino Valley									
	Adjusted		Maximum			Adjusted		Maximum			Adjusted		Maximum		Adjusted		Maximum							
	Right	1	Allowable	2	Actual	3	Right	1	Allowable	2	Actual	3	Right	1	Allowable	2	Actual	3						
1996	52,199	5	67,859		63,382	18a	1,427		1,855		278		1,230		1,599		0		49,542	5	64,405		63,104	18b
1997	52,199	5	67,859		59,938	19a	1,427		1,855		494		1,230		1,599		0		49,542	5	64,405		59,444	19b
1998	52,199	5	67,859		54,417	20a	1,427		1,855		0		1,230		1,599		0		49,542	5	64,405		54,417	20b
1999	52,199	5	67,859		61,142	21a	1,427		1,855		181		1,230		1,599		0		49,542	5	64,405		60,961	21b
2000	52,199	5	67,859		63,472	22a	1,427		1,855		117		1,230		1,599		0		49,542	5	64,405		63,355	22b
2001	52,199	5	67,859		59,312	23a	1,427		1,855		229		1,230		1,599		0		49,542	5	64,405		59,083	23b
2002	52,199	5	67,859		65,462	24a	1,427		1,855		172		1,230		1,599		0		49,542	5	64,405		65,290	24b
2003	52,199	5	67,859		54,514		1,427		1,855		10		1,230		1,599		0		49,542	5	64,405		54,504	
2004	52,199	5	67,859		53,414	25a	1,427		1,855		0		1,230		1,599		0		49,542	5	64,405		53,414	25b
2005	52,199	5	67,859		44,696		1,427		1,855		13		1,230		1,599		0		49,542	5	64,405		44,683	
2006	52,199	5	67,859		49,444		1,427		1,855		30		1,230		1,599		0		49,542	5	64,405		49,414	
2007	52,199	5	67,859		52,018	26a	1,427		1,855		39		1,230		1,599		0		49,542	5	64,405		51,979	26b
2008	52,199	5	67,859		53,581		1,427		1,855		70		1,230		1,599		0		49,542	5	64,405		53,511	
2009	52,199		67,859		43,061		1,427		1,855		121		1,230		1,599		0		49,542	5	64,405		42,940	
2010																								
2011																								
2012																								
2013																								
2014																								
2015																								

See Report of Watermaster, Volume 1A, Table No. 3.

69

TABLE NO. 10
 ANNUAL ACCOUNTING OF EXTRACTIONS FROM THE SAN BERNARDINO BASIN AREA
 AND DELIVERIES TO EACH SERVICE AREA BY THE CITY OF RIVERSIDE
 (INCLUDING THOSE RIGHTS ACQUIRED AS SUCCESSOR TO THE
 RIVERSIDE WATER COMPANY AND THE GAGE CANAL COMPANY)

- 1 Adjusted Right as determined and reported to the Court in the Annual Report of the Western-San Bernardino Watermaster for Calendar Year 1971 in Table No. 9, page 27.
- 2 Maximum Allowable for any one year, not to exceed 130% of Adjusted Right.
- 3 Actual verified extractions from Table No. 3 of Watermaster Report.
- 4 Adjusted Right was not effective until January 1, 1972; thus the Base Right for 1971 is as shown in Appendix B, Table B-1 of the Judgment.
- 5 See Footnote 1 of Table 3.
- 6 Includes 1,148 acre-feet of additional extraction which are allowable under provisions of the December 22, 1981 Western-San Bernardino agreement prepared in accordance with paragraph VI(b)6 of the Judgment.
- 7 Includes 76 acre-feet of additional extraction which are allowable under provisions of the December 22, 1981 Western-San Bernardino agreement.
- 8 Includes 9,332 acre-feet of additional extraction which are allowable under provisions of the December 22, 1981 Western-San Bernardino agreement.
- 9 Includes 13,472 af of additional extraction which are allowable under provisions of the Feb 25, 1985 and the Aug 21, 1985 Western-San Bernardino agreements prepared in accordance with paragraph VI(b)6 of the Judgment.
- 10 Includes 10,000 acre-feet of additional extraction which are allowable under provisions of the December 22, 1981 Western-San Bernardino agreement.
- 11 Includes 7,965 acre-feet of additional extraction which are allowable under provisions of May 20, 1987 amendment to the December 22, 1981 Western-San Bernardino agreement.
- 12 Includes 14,201 acre-feet of additional extraction which are allowable under provisions of January 20, 1988 amendment to the December 22, 1981 Western-San Bernardino agreement.
- 13 Includes 3,212 acre-feet of additional extraction which are allowable under provisions of April 3, 1991 amendment to the December 22, 1981 Western-San Bernardino agreement.
- 14 Includes 7,177 acre-feet of additional extraction which are allowable under provisions of April 4, 1992 amendment to the December 22, 1981 Western-San Bernardino agreement.
- 15a Includes 7,152 acre-feet of additional extraction which are allowable under provisions of June 16, 1993 amendment to the December 22, 1981 Western-San Bernardino agreement. 5,622 produced from Riverside's allowance for Riverside and 1,530 produced from SBVMWD's allowance for WMWD.
- 15b Includes 9,917 acre-feet of additional export which are allowable under provisions of June 16, 1993 amendment to the December 22, 1981 Western-San Bernardino agreement. 8,387 exported from Riverside's allowance for Riverside and 1,530 exported from SBVMWD's allowance for WMWD.
- 16a Includes 9,107 acre-feet of additional extraction which are allowable under provisions of March 2, 1994 amendment to the December 22, 1981 Western-San Bernardino agreement. 5,622 produced/exported from Riverside's allowance for Riverside and 3,485 produced from SBVMWD's allowance for WMWD.
- 16b Includes 10,859 acre-feet of additional export which are allowable under provisions of March 2, 1994 amendment to the December 22, 1981 Western-San Bernardino agreement. 7,374 exported from Riverside's allowance for Riverside and 3,485 exported from SBVMWD's allowance for WMWD.
- 17a Includes 5,799 acre-feet of additional extraction which are allowable under provisions of March 15, 1995 amendment to the December 22, 1981 Western-San Bernardino agreement. 5,622 produced from Riverside's allowance for Riverside and 177 produced from SBVMWD's allowance for WMWD.
- 17b Includes 8,357 acre-feet of additional export which are allowable under provisions of March 15, 1995 amendment to the December 22, 1981 Western-San Bernardino agreement. 8,180 exported from Riverside's allowance for Riverside and 177 exported from SBVMWD's allowance for WMWD.
- 18a Includes 8,390 acre-feet of additional extraction which are allowable under provisions of March 6, 1996 amendment to the December 22, 1981 Western-San Bernardino agreement. 5,622 produced from Riverside's allowance for Riverside and 2,768 produced from SBVMWD's allowance for WMWD.
- 18b Includes 10,769 acre-feet of additional export which are allowable under provisions of March 6, 1996 amendment to the December 22, 1981 Western-San Bernardino agreement. 8,001 exported from Riverside's allowance for Riverside and 2,768 exported from SBVMWD's allowance for WMWD.

70

ANNUAL ACCOUNTING OF EXTRACTIONS FROM THE SAN BERNARDINO BASIN AREA
AND DELIVERIES TO EACH SERVICE AREA BY THE CITY OF RIVERSIDE
(INCLUDING THOSE RIGHTS ACQUIRED AS SUCCESSOR TO THE
RIVERSIDE WATER COMPANY AND THE GAGE CANAL COMPANY)

- 19a Includes 7,495 acre-feet of additional extraction which are allowable under provisions of February 19, 1997 amendment to the December 22, 1981 Western-San Bernardino agreement. 5,622 produced from Riverside's allowance for Riverside and 1,873 produced from SBVMWD's allowance for WMWD.
- 19b Includes 9,658 acre-feet of additional export which are allowable under provisions of February 19, 1997 amendment to the December 22, 1981 Western-San Bernardino agreement. 7,785 exported from Riverside's allowance for Riverside and 1,873 exported from SBVMWD's allowance for WMWD.
- 20a Includes 6,671 acre-feet of additional extraction which are allowable under provisions of April 30, 1998 amendment to the December 22, 1981 Western-San Bernardino agreement. 5,622 produced from Riverside's allowance for Riverside and 1,049 produced from SBVMWD's allowance for WMWD.
- 20b Includes 6,671 acre-feet of additional export which are allowable under provisions of April 30, 1998 amendment to the December 22, 1981 Western-San Bernardino agreement. 5,622 exported from Riverside's allowance for Riverside and 1,049 exported from SBVMWD's allowance for WMWD.
- 21a Includes 8,943 acre-feet of additional extraction which are allowable under provisions of January 6, 1999, 13th Amendment to the December 22, 1981 Western-San Bernardino agreement.
- 21b Includes 11,419 acre-feet of additional export which are allowable under provisions of January 6, 1999, 13th Amendment to the December 22, 1981 Western-San Bernardino agreement.
- 22a Includes 11,273 acre-feet of additional extraction which are allowable under provisions of August 16, 2000, 15th Amendment to the December 22, 1981 Western-San Bernardino agreement.
- 22b Includes 13,803 acre-feet of additional export which are allowable under provisions of August 16, 2000, 15th Amendment to the December 22, 1981 Western-San Bernardino agreement.
- 23a Includes 7,113 acre-feet of additional extraction which are allowable under provisions of February 7, 2001, 17th Amendment to the December 22, 1981 Western-San Bernardino agreement.
- 23b Includes 9,541 acre-feet of additional export which are allowable under provisions of February 7, 2001, 17th and 18th Amendments to the December 22, 1981 Western-San Bernardino agreement.
- 24a Includes 13,263 acre-feet of additional extraction which are allowable under provisions of February 6, 2002, 19th Amendment to the December 22, 1981 Western-San Bernardino agreement.
- 24b Includes 15,748 acre-feet of additional export which are allowable under provisions of February 6, 2002, 19th Amendment to the December 22, 1981 Western-San Bernardino agreement.
- 25a Includes 1,215 acre-feet of additional extraction which are allowable under provisions of August 18, 2004 21st Amendment to the December 22, 1981 Western-San Bernardino agreement.
- 25b Includes 3,872 acre-feet of additional export which are allowable under provisions of August 18, 2004 21st Amendment to the December 22, 1981 Western-San Bernardino agreement.
- 26a Includes 2,459 acre-feet of State Water Project Water imported by Western. See Table No. 17A of Watermaster Report.
- 26b Includes 2,459 acre-feet of State Water Project Water imported by Western. See Table No. 17A of Watermaster Report.

TABLE NO. 10
 ANNUAL ACCOUNTING OF EXTRACTIONS FROM THE SAN BERNARDINO BASIN AREA
 AND DELIVERIES TO EACH SERVICE AREA BY THE CITY OF RIVERSIDE
 (INCLUDING THOSE RIGHTS ACQUIRED AS SUCCESSOR TO THE
 RIVERSIDE WATER COMPANY AND THE GAGE CANAL COMPANY)
 FIVE-YEAR TOTALS
 (All Quantities in Acre-Feet)

Calendar Years	Verified Extractions from the San Bernardino Basin Area			Delivery to San Bernardino Basin Area			Delivery to Colton Basin and Riverside Basin Areas in San Bernardino County				Delivery to Areas Outside San Bernardino Valley			
	Adjusted Right	Maximum Allowable	Actual	Adjusted Right	Maximum Allowable	Actual	Adjusted Right	Maximum Allowable	Actual	Adjusted Right	Maximum Allowable	Actual	Adjusted Right	Maximum Allowable
1971-75	262,244	262,244	233,927	7,170	7,170	339	6,180	6,180	2,776	248,894	248,894	230,812		
1972-76	260,995	260,995	231,419	7,135	7,135	241	6,150	6,150	2,630	247,710	247,710	228,548		
1973-77	260,995	260,995	236,724	7,135	7,135	156	6,150	6,150	2,429	247,710	247,710	234,139		
1974-78	260,995	260,995	239,086	7,135	7,135	646	6,150	6,150	2,218	247,710	247,710	236,222		
1975-79	260,995	260,995	248,096	7,135	7,135	646	6,150	6,150	2,083	247,710	247,710	245,367		
1976-80	260,995	260,995	250,890	7,135	7,135	1,029	6,150	6,150	1,585	247,710	247,710	248,276		
1977-81	260,995	260,995	250,525	7,135	7,135	1,753	6,150	6,150	1,062	247,710	247,710	247,710		
1978-82	260,995	260,995	249,125	7,135	7,135	1,915	6,150	6,150	716	247,710	247,710	246,494		
1979-83	260,995	260,995	249,729	7,135	7,135	1,604	6,150	6,150	415	247,710	247,710	247,710		
1980-84	260,995	260,995	246,926	7,135	7,135	1,636	6,150	6,150	0	247,710	247,710	245,290		
1981-85	260,995	260,995	245,771	7,135	7,135	1,312	6,150	6,150	0	247,710	247,710	244,459		
1982-86	260,995	260,995	244,741	7,135	7,135	1,025	6,150	6,150	0	247,710	247,710	243,716		
1983-87	260,995	260,995	245,018	7,135	7,135	1,197	6,150	6,150	0	247,710	247,710	243,821		
1984-88	260,995	260,995	249,341	7,135	7,135	1,677	6,150	6,150	0	247,710	247,710	247,664		
1985-89	260,995	260,995	250,551	7,135	7,135	1,673	6,150	6,150	0	247,710	247,710	248,878		
1986-90	260,995	260,995	248,587	7,135	7,135	1,633	6,150	6,150	0	247,710	247,710	246,954		
1987-91	260,995	260,995	248,305	7,135	7,135	1,351	6,150	6,150	0	247,710	247,710	246,954		
1988-92	260,995	260,995	241,491	7,135	7,135	1,220	6,150	6,150	0	247,710	247,710	240,271		
1989-93	260,995	260,995	236,142	7,135	7,135	297	6,150	6,150	0	247,710	247,710	233,080		
1990-94	260,995	260,995	236,698	7,135	7,135	315	6,150	6,150	0	247,710	247,710	231,866		
1991-95	260,995	260,995	238,654	7,135	7,135	395	6,150	6,150	0	247,710	247,710	231,184		
1992-96	260,995	260,995	243,949	7,135	7,135	518	6,150	6,150	0	247,710	247,710	233,977		
1993-97	260,995	260,995	253,330	7,135	7,135	809	6,150	6,150	0	247,710	247,710	240,904		
1994-98	260,995	260,995	256,114	7,135	7,135	917	6,150	6,150	0	247,710	247,710	246,345		
1995-99	260,995	260,995	256,973	7,135	7,135	1,052	6,150	6,150	0	247,710	247,710	246,345		

72

TABLE NO. 10
 ANNUAL ACCOUNTING OF EXTRACTIONS FROM THE SAN BERNARDINO BASIN AREA
 AND DELIVERIES TO EACH SERVICE AREA BY THE CITY OF RIVERSIDE
 (INCLUDING THOSE RIGHTS ACQUIRED AS SUCCESSOR TO THE
 RIVERSIDE WATER COMPANY AND THE GAGE CANAL COMPANY)
 FIVE-YEAR TOTALS
 (All Quantities in Acre-Feet)

Calendar Years	Verified Extractions from the San Bernardino Basin Area			Delivery to San Bernardino Basin Area			Delivery to Colton Basin and Riverside Basin Areas in San Bernardino County				Delivery to Areas Outside San Bernardino Valley				
	Adjusted Right 1	Maximum Allowable 2	Actual 3	Adjusted Right 1	Maximum Allowable 2	Actual 3	Adjusted Right 1	Maximum Allowable 2	Actual 3	Adjusted Right 1	Maximum Allowable 2	Actual 3	Adjusted Right 1	Maximum Allowable 2	Actual 3
1996-00	260,995	260,995	259,579 <i>23a</i>	7,135	7,135	1,070	6,150	6,150	0	247,710	247,710	248,951 <i>23b</i>			
1997-01	260,995	260,995	256,786 <i>24a</i>	7,135	7,135	1,021	6,150	6,150	0	247,710	247,710	246,158 <i>24b</i>			
1998-02	260,995	260,995	256,542 <i>25a</i>	7,135	7,135	699	6,150	6,150	0	247,710	247,710	245,914 <i>25b</i>			
1999-03	260,995	260,995	263,310 <i>26a</i>	7,135	7,135	709	6,150	6,150	0	247,710	247,710	252,672 <i>26b</i>			
2000-04	260,995	260,995	263,310 <i>27a</i>	7,135	7,135	528	6,150	6,150	0	247,710	247,710	252,672 <i>27b</i>			
2001-05	260,995	260,995	255,807 <i>28a</i>	7,135	7,135	424	6,150	6,150	0	247,710	247,710	247,813 <i>28b</i>			
2002-06	260,995	260,995	253,052 <i>29a</i>	7,135	7,135	225	6,150	6,150	0	247,710	247,710	247,685 <i>29b</i>			
2003-07	260,995	260,995	250,412 <i>30a</i>	7,135	7,135	92	6,150	6,150	0	247,710	247,710	247,663 <i>30b</i>			
2004-08	260,995	260,995	249,479 <i>30a</i>	7,135	7,135	152	6,150	6,150	0	247,710	247,710	246,670 <i>30b</i>			
2005-09	260,995	260,995	240,341 <i>30a</i>	7,135	7,135	273	6,150	6,150	0	247,710	247,710	240,068 <i>30b</i>			
2006-10															
2007-11															
2008-12															
2009-13															
2010-14															
2011-15															
Excess Extractions															
2005-09		(20,654) *			(6,862) *			(6,150) *					(7,642) *		

* Parentheses indicate that actual extractions are less than Adjusted Right.

73

TABLE NO. 10
ANNUAL ACCOUNTING OF EXTRACTIONS FROM THE SAN BERNARDINO BASIN AREA
AND DELIVERIES TO EACH SERVICE AREA BY THE CITY OF RIVERSIDE
(INCLUDING THOSE RIGHTS ACQUIRED AS SUCCESSOR TO THE
RIVERSIDE WATER COMPANY AND THE GAGE CANAL COMPANY)

- 1 Adjusted Right as determined and reported to the Court in the Annual Report of the Western-San Bernardino Watermaster for Calendar Year 1971 in Table No. 9, page 27.
- 2 Maximum allowable for the five-year period is the same as the five-year-period Adjusted Right.
- 3 Actual verified extractions from Table No. 3.
- 4 Adjusted Right was not effective until January 1, 1972; thus the Adjusted Right for the period 1971-75 is more than the Adjusted Right for subsequent five-year periods.
- 5 Excludes 1,148 acre-feet in 1981 of allowable additional extraction. See Footnote 6 on Table 10 Page 1c of 2.
- 6 Excludes 1,148 acre-feet in 1981 and 76 acre-feet in 1983 of allowable additional extraction. See Footnotes 6 & 7 on Table 10 Page 1c of 2.
- 6a Excludes 1,148 acre-feet in 1981, 76 acre-feet in 1983, and 9,332 acre-feet in 1984 of allowable additional extraction. See Footnotes 6, 7, and 8 on Table 10 Page 1c of 2.
- 7 Excludes 1,148 acre-feet in 1981, 76 acre-feet in 1983, 9,332 acre-feet in 1984, and 13,472 acre-feet in 1985 of allowable additional extraction. See Footnotes 6, 7, 8, and 9 on Table 10 Page 1c of 2.
- 8 Excludes 76 acre-feet in 1983, 9,332 acre-feet in 1984, 13,472 acre-feet in 1985, and 10,000 acre-feet in 1986 of allowable additional extraction. See Footnotes 7, 8, 9, and 10 on Table 10 Page 1c of 2.
- 9 Excludes 76 af in 1983, 9,332 af in 1984, 13,472 af in 1985, 10,000 af in 1986, and 7,965 af in 1987 of allowable additional extraction. See Footnotes 7, 8, 9, 10, and 11 on Table 10 Page 1c of 2.
- 10 Excludes 9,332 af in 1984, 13,472 af in 1985, 10,000 af in 1986, 7,965 af in 1987, and 14,201 af in 1988 of allowable additional extraction. See Footnotes 8, 9, 10, 11, and 12 on Table 10 Page 1c of 2.
- 11 Excludes 13,472 acre-feet in 1985, 10,000 acre-feet in 1986, 7,965 acre-feet in 1987, and 14,201 acre-feet in 1988 of allowable additional extraction. See Footnotes 9, 10, 11, and 12 on Table 10 Page 1c of 2.
- 12 Excludes 10,000 acre-feet in 1986, 7,965 acre-feet in 1987, and 14,201 acre-feet in 1988 of allowable additional extraction. See Footnotes 10, 11, and 12 on Table 10 Page 1c of 2.
- 13 Number corrected during verification of 1990 extractions.
- 14 Excludes 7,965 acre-feet in 1987, 14,201 acre-feet in 1988, and 3,212 acre-feet in 1991 of allowable additional extraction. See Footnotes 11, 12, and 13 on Table 10 Page 1c of 2.
- 15 Excludes 14,201 acre-feet in 1988, 3,212 acre-feet in 1991, and 7,177 acre-feet in 1992 of allowable additional extraction. See Footnotes 12, 13, and 14 on Table 10 Page 1c of 2.
- 16a Excludes 3,212 acre-feet in 1991, 7,177 acre-feet in 1992, and 7,152 acre-feet in 1993 of allowable additional extraction. See Footnotes 13, 14, and 15a on Table 10 Page 1c of 2.
- 16b Excludes 3,212 acre-feet in 1991, 7,177 acre-feet in 1992, and 9,917 acre-feet in 1993 of allowable additional export. See Footnotes 13, 14, and 15b on Table 10 Page 1c of 2.
- 17a Excludes 3,212 acre-feet in 1991, 7,177 acre-feet in 1992, 7,152 acre-feet in 1993, and 9,107 acre-feet in 1994 of allowable additional extraction. See Footnotes 13, 14, 15a, and 16a on Table 10 Page 1c of 2.
- 17b Excludes 3,212 acre-feet in 1991, 7,177 acre-feet in 1992, 9,917 acre-feet in 1993, and 10,859 acre-feet in 1994 of allowable additional export. See Footnotes 13, 14, 15b, and 16b on Table 10 Page 1c of 2.
- 18a Excludes 3,212 af in 1991, 7,177 af in 1992, 7,152 af in 1993, 9,107 af in 1994, and 5,799 af in 1995 of allowable additional extraction. See Footnotes 13, 14, 15a, 16a and 17a on Table 10 Page 1c of 2.
- 18b Excludes 3,212 af in 1991, 7,177 af in 1992, 9,917 af in 1993, 10,859 af in 1994, and 8,357 af in 1995 of allowable additional export. See Footnotes 13, 14, 15b, 16b and 17b on Table 10 Page 1c of 2.
- 19a Excludes 7,177 af in 1992, 7,152 af in 1993, 9,107 af in 1994, 5,799 af in 1995, and 8,390 af in 1996, of allowable additional extraction. See Footnotes 14, 15a, 16a, 17a and 18a on Table 10 Page 1c of 2.
- 19b Excludes 7,177 af in 1992, 9,917 af in 1993, 10,859 af in 1994, 8,357 af in 1995, and 10,769 af in 1996, of allowable additional export. See Footnotes 14, 15b, 16b, 17b and 18b on Table 10 Page 1c of 2.
- 20a Excludes 7,152 af in 1993, 9,107 af in 1994, 5,799 af in 1995, 8,390 af in 1996, and 7,495 af in 1997 of allowable additional extraction. See Footnotes 15a, 16a, 17a, 18a on Table 10 Page 1c of 2 and 19a on Table 10 Page 1d of 2.
- 20b Excludes 9,917 af in 1993, 10,859 af in 1994, 8,357 af in 1995, 10,769 af in 1996, and 9,658 af in 1997 of allowable additional export. See Footnotes 15b, 16b, 17b, 18b on Table 10 Page 1c of 2 and 19b on Table 10 Page 1d of 2.
- 21a Excludes 9,107 af in 1994, 5,799 af in 1995, 8,390 af in 1996, 7,495 af in 1997, and 6,671 af in 1998 of allowable additional extraction. See Footnotes 16a, 17a, 18a on Table 10 Page 1c of 2 and 19a, 20a on Table 10 Page 1d of 2.
- 21b Excludes 10,859 af in 1994, 8,357 af in 1995, 10,769 af in 1996, 9,658 af in 1997, and 6,671 af in 1998 of allowable additional export. See Footnotes 16b, 17b, 18b on Table 10 Page 1c of 2 and 19b, 20b on Table 10 Page 1d of 2.
- 22a Excludes 5,799 af in 1995, 8,390 af in 1996, 7,495 af in 1997, 6,671 af in 1998, and 8,943 af in 1999 of allowable additional extraction. See Footnotes 17a and 18a on Table 10 Page 1c of 2 and 19a, 20a and 21a on Table 10 Page 1d of 2.
- 22b Excludes 8,357 af in 1995, 10,769 af in 1996, 9,658 af in 1997, 6,671 af in 1998, and 11,419 af in 1999 of allowable additional export. See Footnotes 17b and 18b on Table 10 Page 1c of 2 and 19b, 20b and 21b on Table 10 Page 1d of 2.

ANNUAL ACCOUNTING OF EXTRACTIONS FROM THE SAN BERNARDINO BASIN AREA
AND DELIVERIES TO EACH SERVICE AREA BY THE CITY OF RIVERSIDE
(INCLUDING THOSE RIGHTS ACQUIRED AS SUCCESSOR TO THE
RIVERSIDE WATER COMPANY AND THE GAGE CANAL COMPANY)

- 23a Excludes 8,390 af in 1996, 7,495 af in 1997, 6,671 af in 1998, 8,943 af in 1999, and 11,273 af in 2000 of allowable additional extraction. See Footnotes 18a, 19a, 20a, 21a, and 22a on Table 10 Page 1d of 2.
- 23b Excludes 10,769 af in 1996, 9,658 af in 1997, 6,671 af in 1998, 11,419 af in 1999, and 13,803 af in 2000 of allowable additional export. See Footnotes 18b, 19b, 20b, 21b, and 22b on Table 10 Page 1d of 2.
- 24a Excludes 7,495 af in 1997, 6,671 af in 1998, 8,943 af in 1999, 11,273 af in 2000, and 7,113 af in 2001 of allowable additional extraction. See Footnotes 19a, 20a, 21a, 22a and 23a on Table 10 Page 1d of 2.
- 24b Excludes 9,658 af in 1997, 6,671 af in 1998, 11,419 af in 1999, 13,803 af in 2000, and 9,541 af in 2001 of allowable additional export. See Footnotes 19b, 20b, 21b, 22b, and 23b on Table 10 Page 1d of 2.
- 25a Excludes 6,671 af in 1998, 8,943 af in 1999, 11,273 af in 2000, 7,113 af in 2001 and 13,263 af in 2002 of allowable additional extraction. See Footnotes 20a, 21a, 22a, 23a and 24a on Table 10 Page 1d of 2.
- 25b Excludes 6,671 af in 1998, 11,419 af in 1999, 13,803 af in 2000, 9,541 af in 2001 and 15,748 af in 2002 of allowable additional export. See Footnotes 20b, 21b, 22b, 23b and 24b on Table 10 Page 1d of 2.
- 26a Excludes 8,943 af in 1999, 11,273 af in 2000, 7,113 af in 2001 and 13,263 af in 2002 of allowable additional extraction. See Footnotes 21a, 22a, 23a and 24a on Table 10 Page 1d of 2.
- 26b Excludes 11,419 af in 1999, 13,803 af in 2000, 9,541 af in 2001 and 15,748 af in 2002 of allowable additional export. See Footnotes 21b, 22b, 23b and 24b on Table 10 Page 1d of 2.
- 27a Excludes 11,273 af in 2000, 7,113 af in 2001, 13,263 af in 2002, and 1,215 in 2004 of allowable additional extraction. See Footnotes 22a, 23a, 24a, and 25a on Table 10 Page 1d of 2.
- 27b Excludes 13,803 af in 2000, 9,541 af in 2001, 15,748 af in 2002, and 3,872 af in 2004 of allowable additional export. See Footnotes 22b, 23b, 24b, and 25b on Table 10 Page 1d of 2.
- 28a Excludes 7,113 af in 2001, 13,263 af in 2002, and 1,215 af in 2004 of allowable additional extraction. See Footnotes 23a, 24a, and 25a on Table 10 Page 1d of 2.
- 28b Excludes 9,541 af in 2001, 15,748 af in 2002, and 3,872 af in 2004 of allowable additional export. See Footnotes 23b, 24b, and 25b on Table 10 Page 1d of 2.
- 29a Excludes 13,263 af in 2002, and 1,215 af in 2004 of allowable additional extraction. See Footnotes 24a and 25a on Table 10 Page 1d of 2.
- 29b Excludes 15,748 af in 2002, and 3,872 af in 2004 of allowable additional export. See Footnotes 24b and 25b on Table 10 Page 1d of 2.
- 30a Includes 2,459 af of State Water Project water imported by Western and transferred to City of Riverside. See Table No. 17A of Watermaster Report.
- 30b Excludes 2,459 af of State Water Project water imported by Western and transferred to City of Riverside. See Table No. 17A of Watermaster Report.

ANNUAL ACCOUNTING OF EXTRACTIONS FROM THE SAN BERNARDINO BASIN AREA
AND DELIVERIES TO EACH SERVICE AREA BY RIVERSIDE HIGHLAND WATER COMPANY
ANNUAL TOTALS

(All Quantities in Acre-Feet)

Calendar Year	Verified Extractions from the San Bernardino Basin Area			Delivery to San Bernardino Basin Area			Delivery to Colton Basin and Riverside Basin Areas in San Bernardino County			Delivery to Areas Outside San Bernardino Valley		
	Adjusted Right	Maximum Allowable	Actual	Adjusted Right	Maximum Allowable	Actual	Adjusted Right	Maximum Allowable	Actual	Adjusted Right	Maximum Allowable	Actual
1971	4,399	5,719	4,012	0	0	0	2,509	3,262	2,388	1,890	2,457	1,624
1972	4,294	5,582	4,532	0	0	0	2,449	3,184	2,239	1,845	2,398	2,293
1973	4,294	5,582	3,512	0	0	0	2,449	3,184	1,751	1,845	2,398	1,761
1974	4,294	5,582	4,088	0	0	0	2,449	3,184	1,985	1,845	2,398	2,103
1975	4,294	5,582	4,709	0	0	0	2,449	3,184	2,002	1,845	2,398	2,707
1976	4,294	5,582	4,519	0	0	0	2,449	3,184	2,050	1,845	2,398	2,469
1977	4,294	5,582	3,583	0	0	0	2,449	3,184	1,820	1,845	2,398	1,763
1978	4,294	5,582	1,350	0	0	0	2,449	3,184	1,051	1,845	2,398	299
1979	4,294	5,582	3,369	0	0	0	2,449	3,184	1,781	1,845	2,398	1,588
1980	4,294	5,582	3,677	0	0	0	2,449	3,184	2,060	1,845	2,398	1,617
1981	4,294	5,582	3,604	0	0	0	2,449	3,184	2,151	1,845	2,398	1,453
1982	4,294	5,582	2,795	0	0	0	2,449	3,184	1,775	1,845	2,398	1,020
1983	4,294	5,582	3,161	0	0	0	2,449	3,184	2,318	1,845	2,398	843
1984	4,294	5,582	4,759	0	0	0	2,449	3,184	2,671	1,845	2,398	2,088
1985	4,294	5,582	3,312	0	0	0	2,449	3,184	1,978	1,845	2,398	1,334
1986	4,294	5,582	4,744	0	0	0	2,449	3,184	2,130	1,845	2,398	2,614
1987	4,294	5,582	3,919	0	0	0	2,449	3,184	2,229	1,845	2,398	1,690
1988	4,294	5,582	4,775	0	0	0	2,449	3,184	2,229	1,845	2,398	2,546
1989	4,294	5,582	4,681	0	0	0	2,449	3,184	1,968	1,845	2,398	2,713
1990	4,294	5,582	4,092	0	0	0	2,449	3,184	2,313	1,845	2,398	1,779
1991	4,294	5,582	3,021	0	0	0	2,449	3,184	1,669	1,845	2,398	1,352
1992	4,294	5,582	4,052	0	0	0	2,449	3,184	2,275	1,845	2,398	1,777
1993	4,294	5,582	3,241	0	0	0	2,449	3,184	1,777	1,845	2,398	1,464
1994	4,294	5,582	4,324	0	0	0	2,449	3,184	2,201	1,845	2,398	2,123
1995	4,294	5,582	3,955	0	0	0	2,449	3,184	2,146	1,845	2,398	1,809

76

TABLE NO. 11
 ANNUAL ACCOUNTING OF EXTRactions FROM THE SAN BERNARDINO BASIN AREA
 AND DELIVERIES TO EACH SERVICE AREA BY RIVERSIDE HIGHLAND WATER COMPANY
 ANNUAL TOTALS

(All Quantities in Acre-Feet)

Calendar Year	Verified Extractions from the San Bernardino Basin Area			Delivery to San Bernardino Basin Area			Delivery to Colton Basin and Riverside Basin Areas in San Bernardino County			Delivery to Areas Outside San Bernardino Valley		
	Adjusted Right	Maximum Allowable	Actual	Adjusted Right	Maximum Allowable	Actual	Adjusted Right	Maximum Allowable	Actual	Adjusted Right	Maximum Allowable	Actual
1996	4,294	5,582	5,051	0	0	0	2,449	3,184	2,756	1,845	2,398	2,295
1997	4,294	5,582	4,939	0	0	0	2,449	3,184	2,656	1,845	2,398	2,283
1998	4,294	5,582	3,250	0	0	0	2,449	3,184	1,961	1,845	2,398	1,289
1999	4,294	5,582	4,972	0	0	0	2,449	3,184	2,082	1,845	2,398	2,890
2000	4,294	5,582	3,423	0	0	0	2,449	3,184	2,811	1,845	2,398	612
2001	4,294	5,582	2,925	0	0	0	2,449	3,184	2,543	1,845	2,398	382
2002	4,294	5,582	4,310	0	0	0	2,449	3,184	2,272	1,845	2,398	2,038
2003	4,294	5,582	3,881	0	0	0	2,449	3,184	2,036	1,845	2,398	1,845
2004	4,294	5,582	1,754	0	0	0	2,449	3,184	1,301	1,845	2,398	453
2005	4,294	5,582	3,377	0	0	0	2,449	3,184	1,532	1,845	2,398	1,845
2006	4,294	5,582	4,149	0	0	0	2,449	3,184	2,304	1,845	2,398	1,845
2007	4,294	5,582	3,633	0	0	0	2,449	3,184	1,772	1,845	2,398	1,861
2008	4,294	5,582	2,730	0	0	0	2,449	3,184	2,054	1,845	2,398	676
2009	4,294	5,582	1,648	0	0	0	2,449	3,184	1,073	1,845	2,398	575
2010												
2011												
2012												
2013												
2014												
2015												

77

TABLE NO. 11

ANNUAL ACCOUNTING OF EXTRACTIONS FROM THE SAN BERNARDINO BASIN AREA
AND DELIVERIES TO EACH SERVICE AREA BY RIVERSIDE HIGHLAND WATER COMPANY

See Report of Watermaster, Volume 1A, Table No. 3 - Total production from Volume 1A - Table No. 2.

1 Adjusted Right as determined and reported to the Court in the Annual Report of the Western-San Bernardino Watermaster for Calendar Year 1971 in Table No. 9, page 27.

2 Maximum Allowable for any one year, not to exceed 130% of Adjusted Right.

3 Actual verified extractions from Table No. 3.

4 Adjusted Right was not effective until January 1, 1972; thus the Base Right for 1971 is as shown in Appendix B, Table B-1 of the Judgment.

5 Includes 463 acre-feet of additional extraction which are allowable under provisions of March 6, 1996, 9th Amendment to the December 22, 1981 Western-San Bernardino agreement.

6 Includes 463 acre-feet of additional extraction which are allowable under provisions of February 19, 1997, 10th Amendment to the December 22, 1981 Western-San Bernardino agreement.

7 Includes 463 acre-feet of additional extraction which are allowable under provisions of April 30, 1998, 11th Amendment to the December 22, 1981 Western-San Bernardino agreement.

8 Includes 2,041 acre-feet of additional extraction which are allowable under provisions of January 19, 1999, 12th Amendment to the December 22, 1981 Western-San Bernardino agreement.

9 Includes 567 acre-feet of additional extraction which are allowable under provisions of August 16, 2000 14th Amendment to the December 22, 1981 Western-San Bernardino agreement.

10 Includes 260 acre-feet of additional extraction which are allowable under provisions of February 7, 2001, 16th Amendment to the December 22, 1981 Western-San Bernardino agreement.

11 Includes 1,910 acre-feet of additional extraction which are allowable under provisions of February 6, 2002, 18th Amendment to the December 22, 1981 Western-San Bernardino agreement.

12 Includes 3 acre-feet of additional extraction which are allowable under provisions of February 6, 2002, 18th Amendment to the December 22, 1981 Western-San Bernardino agreement.

Note: Annual Accounting of Extractions as required in Paragraphs V and VI of the Judgment.

TABLE NO. 11
ANNUAL ACCOUNTING OF EXTRACTIIONS FROM THE SAN BERNARDINO BASIN AREA
AND DELIVERIES TO EACH SERVICE AREA BY RIVERSIDE HIGHLAND WATER COMPANY
FIVE-YEAR TOTALS

(All Quantities in Acre-Feet)

Calendar Years	Verified Extractions from the San Bernardino Basin Area			Delivery to San Bernardino Basin Area			Delivery to Colton Basin and Riverside Basin Areas in San Bernardino County			Delivery to Areas Outside San Bernardino Valley		
	Adjusted Right	Maximum Allowable	Actual	Adjusted Right	Maximum Allowable	Actual	Adjusted Right	Maximum Allowable	Actual	Adjusted Right	Maximum Allowable	Actual
1971-75	21,575 ⁴	21,575	20,853	0	0	0	12,305	12,305	10,365	9,270	9,270	10,488
1972-76	21,470	21,470	21,360	0	0	0	12,245	12,245	10,027	9,225	9,225	11,333
1973-77	21,470	21,470	20,411	0	0	0	12,245	12,245	9,608	9,225	9,225	10,803
1974-78	21,470	21,470	18,249	0	0	0	12,245	12,245	8,908	9,225	9,225	9,341
1975-79	21,470	21,470	17,530	0	0	0	12,245	12,245	8,704	9,225	9,225	8,826
1976-80	21,470	21,470	16,498	0	0	0	12,245	12,245	8,762	9,225	9,225	7,736
1977-81	21,470	21,470	15,583	0	0	0	12,245	12,245	8,863	9,225	9,225	6,720
1978-82	21,470	21,470	14,795	0	0	0	12,245	12,245	8,818	9,225	9,225	5,977
1979-83	21,470	21,470	16,606	0	0	0	12,245	12,245	10,085	9,225	9,225	6,521
1980-84	21,470	21,470	17,996	0	0	0	12,245	12,245	10,975	9,225	9,225	7,021
1981-85	21,470	21,470	17,631	0	0	0	12,245	12,245	10,893	9,225	9,225	6,738
1982-86	21,470	21,470	18,771	0	0	0	12,245	12,245	10,872	9,225	9,225	7,899
1983-87	21,470	21,470	19,895	0	0	0	12,245	12,245	11,326	9,225	9,225	8,569
1984-88	21,470	21,470	21,509	0	0	0	12,245	12,245	11,237	9,225	9,225	10,272
1985-89	21,470	21,470	21,431	0	0	0	12,245	12,245	10,534	9,225	9,225	10,897
1986-90	21,470	21,470	22,211	0	0	0	12,245	12,245	10,869	9,225	9,225	11,342
1987-91	21,470	21,470	20,488	0	0	0	12,245	12,245	10,408	9,225	9,225	10,080
1988-92	21,470	21,470	20,621	0	0	0	12,245	12,245	10,454	9,225	9,225	10,167
1989-93	21,470	21,470	19,087	0	0	0	12,245	12,245	10,002	9,225	9,225	9,085
1990-94	21,470	21,470	18,730	0	0	0	12,245	12,245	10,235	9,225	9,225	8,495
1991-95	21,470	21,470	18,593	0	0	0	12,245	12,245	10,068	9,225	9,225	8,525
1992-96	21,470	21,470	20,160 ⁵	0	0	0	12,245	12,245	11,155	9,225	9,225	9,005 ⁵
1993-97	21,470	21,470	20,584 ⁶	0	0	0	12,245	12,245	11,536	9,225	9,225	9,048 ⁶
1994-98	21,470	21,470	20,130 ⁷	0	0	0	12,245	12,245	11,720	9,225	9,225	8,410 ⁷
1995-99	21,470	21,470	18,737 ⁸	0	0	0	12,245	12,245	11,601	9,225	9,225	7,136 ⁸

79

TABLE NO. 11
 ANNUAL ACCOUNTING OF EXTRACTIONS FROM THE SAN BERNARDINO BASIN AREA
 AND DELIVERIES TO EACH SERVICE AREA BY RIVERSIDE HIGHLAND WATER COMPANY
 FIVE-YEAR TOTALS

(All Quantities in Acre-Feet)

Calendar Years	Verified Extractions from the San Bernardino Basin Area			Delivery to San Bernardino Basin Area			Delivery to Colton Basin and Riverside Basin Areas in San Bernardino County			Delivery to Areas Outside San Bernardino Valley		
	Adjusted Right 1	Maximum Allowable 2	Actual 3	Adjusted Right 1	Maximum Allowable 2	Actual 3	Adjusted Right 1	Maximum Allowable 2	Actual 3	Adjusted Right 1	Maximum Allowable 2	Actual 3
1996-00	21,470	21,470	17,638 9	0	0	0	12,245	12,245	12,266	9,225	9,225	5,372 9
1997-01	21,470	21,470	15,715 10	0	0	0	12,245	12,245	12,053	9,225	9,225	3,662 10
1998-02	21,470	21,470	13,639 11	0	0	0	12,245	12,245	11,669	9,225	9,225	1,970 11
1999-03	21,470	21,470	14,730 12	0	0	0	12,245	12,245	11,744	9,225	9,225	2,986 12
2000-04	21,470	21,470	13,553 13	0	0	0	12,245	12,245	10,963	9,225	9,225	2,590 13
2001-05	21,470	21,470	14,074 14	0	0	0	12,245	12,245	9,684	9,225	9,225	4,390 14
2002-06	21,470	21,470	15,558	0	0	0	12,245	12,245	9,445	9,225	9,225	6,113
2003-07	21,470	21,470	16,791	0	0	0	12,245	12,245	8,945	9,225	9,225	7,846
2004-08	21,470	21,470	15,643	0	0	0	12,245	12,245	8,963	9,225	9,225	6,680
2005-09	21,470	21,470	15,537	0	0	0	12,245	12,245	8,735	9,225	9,225	6,802
2006-10												
2007-11												
2008-12												
2009-13												
2010-14												
2011-15												
Excess Extractions												
2005-09		(5,933) *			0 *			(3,510) *			(2,423) *	

80

ANNUAL ACCOUNTING OF EXTRACTIONS FROM THE SAN BERNARDINO BASIN AREA
AND DELIVERIES TO EACH SERVICE AREA BY RIVERSIDE HIGHLAND WATER COMPANY

- 1 Adjusted Right as determined and reported to the Court in the Annual Report of the Western-San Bernardino Watermaster for Calendar Year 1971 in Table No. 9, page 2;
- 2 Maximum allowable for the five-year period is the same as the five-year-period Adjusted Right.
- 3 Actual verified extractions from Table No. 3.
- 4 Adjusted Right was not effective until January 1, 1972; thus the Adjusted Right for the period 1971-75 is more than the Adjusted Right for subsequent five-year periods
- 5 Excludes 463 acre-feet in 1996 of allowable additional extraction. See Footnote 5 on Table 11 Page 1c of 2.
- 6 Excludes 463 acre-feet in 1996 and 463 acre-feet in 1997 of allowable additional extraction. See Footnotes 5 and 6 on Table 11 Page 1c of 2
- 7 Excludes 463 acre-feet in 1996, 463 acre-feet in 1997, and 463 acre-feet in 1998 of allowable additional extraction. See Footnotes 5, 6, and 7 on Table 11 Page 1c of 2
- 8 Excludes 463 acre-feet in 1996, 463 acre-feet in 1997, 463 acre-feet in 1998, and 2,041 acre-feet in 1999 of allowable additional extraction. See Footnotes 5, 6, 7, and 8 on Table 11 Page 1c of 2
- 9 Excludes 463 acre-feet in 1996, 463 acre-feet in 1997, 463 acre-feet in 1998, 2,041 acre-feet in 1999 and 567 acre-feet in 2000 of allowable additional extraction. See Footnotes 5, 6, 7, 8, and 9 on Table 11 Page 1c of 2.
- 10 Excludes 463 acre-feet in 1997, 463 acre-feet in 1998, 2,041 acre-feet in 1999, 567 acre-feet in 2000 and 260 acre-feet in 2001 of allowable additional extraction. See Footnotes 6, 7, 8, 9 and 10 on Table 11 Page 1c of 2.
- 11 Excludes 463 acre-feet in 1998, 2,041 acre-feet in 1999, 567 acre-feet in 2000, 260 acre-feet in 2001 and 1,910 acre-feet in 2002 of allowable additional extraction. See Footnotes 7, 8, 9, 10 and 11 on Table 11 Page 1c of 2.
- 12 Excludes 2,041 acre-feet in 1999, 567 acre-feet in 2000, 260 acre-feet in 2001, 1,910 acre-feet in 2002 and 3 acre-feet in 2003 of allowable additional extraction. See Footnotes 8, 9, 10, 11 and 12 on Table 11 Page 1c of 2.
- 13 Excludes 567 acre-feet in 2000, 260 acre-feet in 2001, 1,910 acre-feet in 2002 and 3 acre-feet in 2003 of allowable additional extraction. See Footnotes 9, 10, 11 and 12 on Table 11 Page 1c of 2
- 14 Excludes 260 acre-feet in 2001, 1,910 acre-feet in 2002 and 3 acre-feet in 2003 of allowable additional extraction. See Footnotes 10, 11 and 12 on Table 11 Page 1c of 2
- * Parentheses indicate that actual extractions are less than Adjusted Right.

TABLE NO. 12
 ANNUAL ACCOUNTING OF EXTRACTIONS FROM THE SAN BERNARDINO BASIN AREA
 AND DELIVERIES TO EACH SERVICE AREA BY
 AGUA MANSA WATER COMPANY AND MEEKS & DALEY WATER COMPANY
 ANNUAL TOTALS
 (All Quantities in Acre-Feet)

Calendar Year	Verified Extractions from the San Bernardino Basin Area				Delivery to San Bernardino Basin Area				Delivery to Colton Basin and Riverside Basin Areas in San Bernardino County				Delivery to Areas Outside San Bernardino Valley			
	Adjusted Right	1	Maximum Allowable 2	Actual 3	Adjusted Right	1	Maximum Allowable 2	Actual 3	Adjusted Right	1	Maximum Allowable 2	Actual 3	Adjusted Right	1	Maximum Allowable 2	Actual 3
1971	8,026	4	10,434	2,902	0	4	0	0	325	4	423	383	7,700	4	10,010	2,519
1972	7,833		10,183	3,527	0		0	0	318		413	377	7,515		9,770	3,150
1973	7,833		10,183	2,979	0		0	0	318		413	250	7,515		9,770	2,729
1974	7,833		10,183	4,504	0		0	0	318		413	246	7,515		9,770	4,258
1975	7,833		10,183	3,950	0		0	0	318		413	168	7,515		9,770	3,782
1976	7,833		10,183	5,393	0		0	0	318		413	182	7,515		9,770	5,211
1977	7,833		10,183	4,220	0		0	0	318		413	146	7,515		9,770	4,074
1978	7,833		10,183	2,254	0		0	0	318		413	161	7,515		9,770	2,093
1979	7,833		10,183	3,930	0		0	0	318		413	166	7,515		9,770	3,764
1979	7,833		10,183	2,333	0		0	0	318		413	323	7,515		9,770	2,010
1981	7,833		10,183	3,092	0		0	0	318		413	358	7,515		9,770	2,734
1982	7,833		10,183	3,716	0		0	0	318		413	169	7,515		9,770	3,547
1983	7,833		10,183	2,651	0		0	0	318		413	245	7,515		9,770	2,406
1984	7,833		10,183	5,165	0		0	0	318		413	233	7,515		9,770	4,932
1985	7,833		10,183	5,385	0		0	0	318		413	210	7,515		9,770	5,175
1986	7,833		10,183	5,570	0		0	0	318		413	234	7,515		9,770	5,336
1987	7,833		10,183	4,914	0		0	0	318		413	193	7,515		9,770	4,721
1988	7,833		10,183	4,966	0		0	0	318		413	233	7,515		9,770	4,733
1989	7,833		10,183	5,392	0		0	0	318		413	240	7,515		9,770	5,152
1990	7,833		10,183	3,851	0		0	0	318		413	83	7,515		9,770	3,768
1991	7,833		10,183	4,426	0		0	0	318		413	190	7,515		9,770	4,236
1992	7,833		10,183	4,100	0		0	0	318		413	118	7,515		9,770	3,982
1993	7,833		10,183	5,013	0		0	0	318		413	276	7,515		9,770	4,737
1994	7,833		10,183	4,525	0		0	0	318		413	227	7,515		9,770	4,298
1995	7,833		10,183	3,560	0		0	0	318		413	145	7,515		9,770	3,415

82

TABLE NO. 12
 ANNUAL ACCOUNTING OF EXTRACTIONS FROM THE SAN BERNARDINO BASIN AREA
 AND DELIVERIES TO EACH SERVICE AREA BY
 AGUA MANSA WATER COMPANY AND MEEKS & DALEY WATER COMPANY
 ANNUAL TOTALS
 (All Quantities in Acre-Feet)

Calendar Year	Verified Extractions from the San Bernardino Basin Area			Delivery to San Bernardino Basin Area			Delivery to Colton Basin and Riverside Basin Areas in San Bernardino County			Delivery to Areas Outside San Bernardino Valley		
	Adjusted Right 1	Maximum Allowable 2	Actual 3	Adjusted Right 1	Maximum Allowable 2	Actual 3	Adjusted Right 1	Maximum Allowable 2	Actual 3	Adjusted Right 1	Maximum Allowable 2	Actual 3
1996	7,833	10,183	3,912	0	0	0	318	413	194	7,515	9,770	3,718
1997	7,833	10,183	4,165	0	0	0	318	413	137	7,515	9,770	4,028
1998	7,833	10,183	3,828	0	0	0	318	413	210	7,515	9,770	3,618
1999	7,833	10,183	6,289	0	0	0	318	413	90	7,515	9,770	6,199
2000	7,833	10,183	3,832	0	0	0	318	413	352	7,515	9,770	3,480
2001	7,833	10,183	3,671	0	0	0	318	413	192	7,515	9,770	3,479
2002	7,833	10,183	5,800	0	0	0	318	413	202	7,515	9,770	5,598
2003	7,833	10,183	7,440	0	0	0	318	413	49	7,515	9,770	7,391
2004	7,833	10,183	3,782	0	0	0	318	413	19	7,515	9,770	3,763
2005	7,833	10,183	5,891	0	0	0	318	413	4	7,515	9,770	5,887
2006	7,833	10,183	7,515	0	0	0	318	413	0	7,515	9,770	7,515
2007	7,833	10,183	7,591	0	0	0	318	413	0	7,515	9,770	7,591
2008	7,833	10,183	4,832	0	0	0	318	413	0	7,515	9,770	4,832
2009	7,833	10,183	6,345	0	0	0	318	413	0	7,515	9,770	6,345
2010												
2011												
2012												
2013												
2014												
2015												

83

See Report of Watermaster, Volume 1A, Table No. 3.

1 Adjusted Right as determined and reported to the Court in the Annual Report of the Western-San Bernardino Watermaster for Calendar Year 1971 in Table No. 9, page 27.

2 Maximum Allowable for any one year, not to exceed 130% of Adjusted Right.

3 Actual verified extractions from Table No. 3.

4 Adjusted Right was not effective until January 1, 1972; thus the Base Right for 1971 is as shown in Appendix B, Table B-1 of the Judgment.

Note: Annual Accounting of Extractions as required in Paragraphs V and VI of the Judgment.

TABLE NO. 12
 ANNUAL ACCOUNTING OF EXTRACTIIONS FROM THE SAN BERNARDINO BASIN AREA
 AND DELIVERIES TO EACH SERVICE AREA BY
 AGUA MANSA WATER COMPANY AND MEEKS & DALEY WATER COMPANY
 FIVE-YEAR TOTALS
 (All Quantities in Acre-Feet)

Calendar Years	Verified Extractions from the San Bernardino Basin Area			Delivery to San Bernardino Basin Area			Delivery to Colton Basin and Riverside Basin Areas in San Bernardino County			Delivery to Areas Outside San Bernardino Valley		
	Adjusted	Maximum	Actual	Adjusted	Maximum	Actual	Adjusted	Maximum	Actual	Adjusted	Maximum	Actual
	Right	Allowable		Right	Allowable		Right	Allowable		Right	Allowable	
1971-75	39,358	39,358	17,862	0	0	0	1,597	1,597	1,424	37,760	37,760	16,438
1972-76	39,165	39,165	20,353	0	0	0	1,590	1,590	1,223	37,575	37,575	19,130
1973-77	39,165	39,165	21,046	0	0	0	1,590	1,590	992	37,575	37,575	20,054
1974-78	39,165	39,165	20,321	0	0	0	1,590	1,590	903	37,575	37,575	19,418
1975-79	39,165	39,165	19,747	0	0	0	1,590	1,590	823	37,575	37,575	18,924
1976-80	39,165	39,165	18,130	0	0	0	1,590	1,590	978	37,575	37,575	17,152
1977-81	39,165	39,165	15,829	0	0	0	1,590	1,590	1,154	37,575	37,575	14,675
1978-82	39,165	39,165	15,325	0	0	0	1,590	1,590	1,177	37,575	37,575	14,148
1979-83	39,165	39,165	15,722	0	0	0	1,590	1,590	1,261	37,575	37,575	14,461
1980-84	39,165	39,165	16,957	0	0	0	1,590	1,590	1,328	37,575	37,575	15,629
1981-85	39,165	39,165	20,009	0	0	0	1,590	1,590	1,215	37,575	37,575	18,794
1982-86	39,165	39,165	22,487	0	0	0	1,590	1,590	1,091	37,575	37,575	21,396
1983-87	39,165	39,165	23,685	0	0	0	1,590	1,590	1,115	37,575	37,575	22,570
1984-88	39,165	39,165	26,000	0	0	0	1,590	1,590	1,103	37,575	37,575	24,897
1985-89	39,165	39,165	26,227	0	0	0	1,590	1,590	1,110	37,575	37,575	25,117
1986-90	39,165	39,165	24,693	0	0	0	1,590	1,590	983	37,575	37,575	23,710
1987-91	39,165	39,165	23,549	0	0	0	1,590	1,590	939	37,575	37,575	22,610
1988-92	39,165	39,165	22,735	0	0	0	1,590	1,590	864	37,575	37,575	21,871
1989-93	39,165	39,165	22,782	0	0	0	1,590	1,590	907	37,575	37,575	21,875
1990-94	39,165	39,165	21,915	0	0	0	1,590	1,590	894	37,575	37,575	21,021
1991-95	39,165	39,165	21,624	0	0	0	1,590	1,590	956	37,575	37,575	20,668
1992-96	39,165	39,165	21,110	0	0	0	1,590	1,590	960	37,575	37,575	20,150
1993-97	39,165	39,165	21,175	0	0	0	1,590	1,590	979	37,575	37,575	20,196
1994-98	39,165	39,165	19,990	0	0	0	1,590	1,590	913	37,575	37,575	19,077
1995-99	39,165	39,165	21,754	0	0	0	1,590	1,590	776	37,575	37,575	20,978

84

TABLE NO. 12
 ANNUAL ACCOUNTING OF EXTRACTIONS FROM THE SAN BERNARDINO BASIN AREA
 AND DELIVERIES TO EACH SERVICE AREA BY
 AGUA MANSA WATER COMPANY AND MEEKS & DALEY WATER COMPANY
 FIVE-YAR TOTALS
 (All Quantities in Acre-Feet)

Calendar Years	Verified Extractions from the San Bernardino Basin Area			Delivery to San Bernardino Basin Area			Delivery to Colton Basin and Riverside Basin Areas in San Bernardino County			Delivery to Areas Outside San Bernardino Valley		
	Adjusted Right 1	Maximum Allowable 2	Actual 3	Adjusted Right 1	Maximum Allowable 2	Actual 3	Adjusted Right 1	Maximum Allowable 2	Actual 3	Adjusted Right 1	Maximum Allowable 2	Actual 3
1996-00	39,165	39,165	22,026	0	0	0	1,590	1,590	983	37,575	37,575	21,043
1997-01	39,165	39,165	21,785	0	0	0	1,590	1,590	981	37,575	37,575	20,804
1998-02	39,165	39,165	23,420	0	0	0	1,590	1,590	1,046	37,575	37,575	22,374
1999-03	39,165	39,165	27,032	0	0	0	1,590	1,590	885	37,575	37,575	26,147
2000-04	39,165	39,165	24,525	0	0	0	1,590	1,590	814	37,575	37,575	23,711
2001-05	39,165	39,165	26,584	0	0	0	1,590	1,590	466	37,575	37,575	26,118
2002-06	39,165	39,165	30,428	0	0	0	1,590	1,590	274	37,575	37,575	30,154
2003-07	39,165	39,165	32,219	0	0	0	1,590	1,590	72	37,575	37,575	32,147
2004-08	39,165	39,165	29,611	0	0	0	1,590	1,590	23	37,575	37,575	29,588
2005-09	39,165	39,165	32,174	0	0	0	1,590	1,590	4	37,575	37,575	32,170
2006-10												
2007-11												
2008-12												
2009-13												
2010-14												
2011-15												
Excess Extractions												
2005-09		(6,991) *			0 *			(1,586) *			(5,405) *	

1 Adjusted Right as determined and reported to the Court in the Annual Report of the Western-San Bernardino Watermaster for Calendar Year 1971 in Table No. 9, page 27.
 2 Maximum allowable for the five-year period is the same as the five-year-period Adjusted Right.
 3 Actual verified extractions from Table No. 3.
 4 Adjusted Right was not effective until January 1, 1972; thus the Adjusted Right for the period 1971-75 is more than the Adjusted Right for subsequent five-year periods.
 * Parentheses indicate that actual extractions are less than Adjusted Right.

85

TABLE NO. 13
 ANNUAL ACCOUNTING OF EXTRACTIONS FROM THE SAN BERNARDINO BASIN AREA
 AND DELIVERIES TO EACH SERVICE AREA BY
 THE REGENTS OF UNIVERSITY OF CALIFORNIA
 ANNUAL TOTALS
 (All Quantities in Acre-Feet)

Calendar Year	Verified Extractions from the San Bernardino Basin Area				Delivery to San Bernardino Basin Area				Delivery to Colton Basin and Riverside Basin Areas in San Bernardino County				Delivery to Areas Outside San Bernardino Valley			
	Adjusted Right	1	Maximum Allowable 2	Actual 3	Adjusted Right	1	Maximum Allowable 2	Actual 3	Adjusted Right	1	Maximum Allowable 2	Actual 3	Adjusted Right	1	Maximum Allowable 2	Actual 3
1971	581	4	755	219	0	4	0	0	0	4	0	0	581	4	755	219
1972	536	5	697	239	0		0	0	0		0	0	536	5	697	239
1973	536	5	697	239	0		0	0	0		0	0	536	5	697	239
1974	536	5	697	267	0		0	0	0		0	0	536	5	697	267
1975	536	5	697	179	0		0	0	0		0	0	536	5	697	179
1976	536	5	697	245	0		0	0	0		0	0	536	5	697	245
1977	536	5	697	87	0		0	0	0		0	0	536	5	697	87
1978	536	5	697	183	0		0	0	0		0	0	536	5	697	183
1979	536	5	697	83	0		0	0	0		0	0	536	5	697	83
1980	536	5	697	7	0		0	0	0		0	0	536	5	697	7
1981	536	5	697	143	0		0	0	0		0	0	536	5	697	143
1982	536	5	697	48	0		0	0	0		0	0	536	5	697	48
1983	536	5	697	0	0		0	0	0		0	0	536	5	697	0
1984	536	5	697	0	0		0	0	0		0	0	536	5	697	0
1985	536	5	697	0	0		0	0	0		0	0	536	5	697	0
1986	536	5	697	48	0		0	0	0		0	0	536	5	697	48
1987	536	5	697	195	0		0	0	0		0	0	536	5	697	195
1988	536	5	697	179	0		0	0	0		0	0	536	5	697	179
1989	536	5	697	62	0		0	0	0		0	0	536	5	697	62
1990	536	5	697	95	0		0	0	0		0	0	536	5	697	95
1991	536	5	697	23	0		0	0	0		0	0	536	5	697	23
1992	536	5	697	32	0		0	0	0		0	0	536	5	697	32
1993	536	5	697	0	0		0	0	0		0	0	536	5	697	0
1994	536	5	697	0	0		0	0	0		0	0	536	5	697	0
1995	536	5	697	0	0		0	0	0		0	0	536	5	697	0

88

TABLE NO. 13
 ANNUAL ACCOUNTING OF EXTRACTIONS FROM THE SAN BERNARDINO BASIN AREA
 AND DELIVERIES TO EACH SERVICE AREA BY
 THE REGENTS OF UNIVERSITY OF CALIFORNIA
 ANNUAL TOTALS
 (All Quantities in Acre-Feet)

Calendar Year	Verified Extractions from the San Bernardino Basin Area			Delivery to San Bernardino Basin Area			Delivery to Colton Basin and Riverside Basin Areas in San Bernardino County			Delivery to Areas Outside San Bernardino Valley		
	Adjusted Right	Maximum Allowable	Actual	Adjusted Right	Maximum Allowable	Actual	Adjusted Right	Maximum Allowable	Actual	Adjusted Right	Maximum Allowable	Actual
1996	536	697	445	0	0	0	0	0	0	536	697	445
1997	536	697	505	0	0	0	0	0	0	536	697	505
1998	536	697	590	0	0	0	0	0	0	536	697	590
1999	536	697	586	0	0	0	0	0	0	536	697	586
2000	536	697	624	0	0	0	0	0	0	536	697	624
2001	536	697	617	0	0	0	0	0	0	536	697	617
2002	536	697	618	0	0	0	0	0	0	536	697	618
2003	536	697	536	0	0	0	0	0	0	536	697	536
2004	536	697	618	0	0	0	0	0	0	536	697	618
2005	536	697	536	0	0	0	0	0	0	536	697	536
2006	536	697	536	0	0	0	0	0	0	536	697	536
2007	536	697	536	0	0	0	0	0	0	536	697	536
2008	536	697	536	0	0	0	0	0	0	536	697	536
2009	536	697	536	0	0	0	0	0	0	536	697	536
2010												
2011												
2012												
2013												
2014												
2015												

87

TABLE NO. 13
ANNUAL ACCOUNTING OF EXTRACTIONS FROM THE SAN BERNARDINO BASIN AREA
AND DELIVERIES TO EACH SERVICE AREA BY
THE REGENTS OF UNIVERSITY OF CALIFORNIA

See Report of Watermaster, Volume 1A, Table No. 3.

1 Adjusted Right as determined and reported to the Court in the Annual Report of the Western-San Bernardino Watermaster for Calendar Year 1971 in Table No. 9, page 27.

2 Maximum Allowable for any one year, not to exceed 130% of Adjusted Right.

3 Actual verified extractions from Table No. 3.

4 Adjusted Right was not effective until January 1, 1972; thus the Base Right for 1971 is as shown in Appendix B, Table B-1 of the Judgment.

5 See Footnote 2 of Table on Page 34.

6 Includes 58 acre-feet of additional extraction which are allowable under provisions of February 19, 1997, 10th Amendment to the December 22, 1981 Western-San Bernardino agreement.

7 Includes 54 acre-feet of additional extraction which are allowable under provisions of April 30, 1998, 11th Amendment to the December 22, 1981 Western-San Bernardino agreement.

8 Includes 50 acre-feet of additional extraction which are allowable under provisions of January 19, 1999, 13th Amendment to the December 22, 1981 Western-San Bernardino agreement.

9 Includes 88 acre-feet of additional extraction which are allowable under provisions of May 16, 2000, 15th Amendment to the December 22, 1981 Western-San Bernardino agreement.

10 Includes 81 acre-feet of additional extraction which are allowable under provisions of February 7, 2001, 17th Amendment to the December 22, 1981 Western-San Bernardino agreement.

11 Includes 82 acre-feet of additional extraction which are allowable under provisions of February 6, 2002, 19th Amendment to the December 22, 1981 Western-San Bernardino agreement.

12 Includes 82 acre-feet of additional extraction which are allowable under provisions of August 18, 2004, 21st Amendment to the December 22, 1981 Western-San Bernardino agreement.

Note: Annual Accounting of Extractions as required in Paragraphs V and VI of the Judgment.

TABLE NO. 13
 ANNUAL ACCOUNTING OF EXTRactions FROM THE SAN BERNARDINO BASIN AREA
 AND DELIVERIES TO EACH SERVICE AREA BY
 THE REGENTS OF UNIVERSITY OF CALIFORNIA
 FIVE-YEAR TOTALS
 (All Quantities in Acre-Feet)

Calendar Years	Verified Extractions from the San Bernardino Basin Area			Delivery to San Bernardino Basin Area			Delivery to Colton Basin and Riverside Basin Areas in San Bernardino County			Delivery to Areas Outside San Bernardino Valley						
	Adjusted Right	1 Allowable	2 Maximum	Actual	3	Adjusted Right	1 Allowable	2 Maximum	Actual	3	Adjusted Right	1 Allowable	2 Maximum	Actual	3	
1971-75	2,725	4	2,725	1,143		0	0	0	0		0	0	0	2,725	2,725	1,143
1972-76	2,680		2,680	1,169		0	0	0	0		0	0	0	2,680	2,680	1,169
1973-77	2,680		2,680	1,017		0	0	0	0		0	0	0	2,680	2,680	1,017
1974-78	2,680		2,680	961		0	0	0	0		0	0	0	2,680	2,680	961
1975-79	2,680		2,680	777		0	0	0	0		0	0	0	2,680	2,680	777
1976-80	2,680		2,680	605		0	0	0	0		0	0	0	2,680	2,680	605
1977-81	2,680		2,680	503		0	0	0	0		0	0	0	2,680	2,680	503
1978-82	2,680		2,680	464		0	0	0	0		0	0	0	2,680	2,680	464
1979-83	2,680		2,680	281		0	0	0	0		0	0	0	2,680	2,680	281
1980-84	2,680		2,680	198		0	0	0	0		0	0	0	2,680	2,680	198
1981-85	2,680		2,680	191		0	0	0	0		0	0	0	2,680	2,680	191
1982-86	2,680		2,680	96		0	0	0	0		0	0	0	2,680	2,680	96
1983-87	2,680		2,680	243		0	0	0	0		0	0	0	2,680	2,680	243
1984-88	2,680		2,680	422		0	0	0	0		0	0	0	2,680	2,680	422
1985-89	2,680		2,680	484		0	0	0	0		0	0	0	2,680	2,680	484
1986-90	2,680		2,680	579		0	0	0	0		0	0	0	2,680	2,680	579
1987-91	2,680		2,680	554		0	0	0	0		0	0	0	2,680	2,680	554
1988-92	2,680		2,680	391		0	0	0	0		0	0	0	2,680	2,680	391
1989-93	2,680		2,680	212		0	0	0	0		0	0	0	2,680	2,680	212
1990-94	2,680		2,680	150		0	0	0	0		0	0	0	2,680	2,680	150
1991-95	2,680		2,680	55		0	0	0	0		0	0	0	2,680	2,680	55
1992-96	2,680		2,680	477		0	0	0	0		0	0	0	2,680	2,680	477
1993-97	2,680		2,680	892	5	0	0	0	0		0	0	0	2,680	2,680	892
1994-98	2,680		2,680	1,428	6	0	0	0	0		0	0	0	2,680	2,680	1,428
1995-99	2,680		2,680	1,964	7	0	0	0	0		0	0	0	2,680	2,680	1,964

68

TABLE NO. 13
 ANNUAL ACCOUNTING OF EXTRACTIONS FROM THE SAN BERNARDINO BASIN AREA
 AND DELIVERIES TO EACH SERVICE AREA BY
 THE REGENTS OF UNIVERSITY OF CALIFORNIA
 FIVE-YEAR TOTALS
 (All Quantities in Acre-Feet)

Calendar Years	Verified Extractions from the San Bernardino Basin Area				Delivery to San Bernardino Basin Area				Delivery to Colton Basin and Riverside Basin Areas in San Bernardino County				Delivery to Areas Outside San Bernardino Valley													
	Adjusted Right	1	Maximum Allowable	2	Actual	3	Adjusted Right	1	Maximum Allowable	2	Actual	3	Adjusted Right	1	Maximum Allowable	2	Actual	3								
1996-00	2,680		2,680		2,500	8	0		0		0	3	0		0		0		0	3	2,680		2,680		2,500	8
1997-01	2,680		2,680		2,591	9	0		0		0	3	0		0		0		0	3	2,680		2,680		2,591	9
1998-02	2,680		2,680		2,680	10	0		0		0	3	0		0		0		0	3	2,680		2,680		2,680	10
1999-03	2,680		2,680		2,680	11	0		0		0	3	0		0		0		0	3	2,680		2,680		2,680	11
2000-04	2,680		2,680		2,680	12	0		0		0	3	0		0		0		0	3	2,680		2,680		2,680	12
2001-05	2,680		2,680		2,680	13	0		0		0	3	0		0		0		0	3	2,680		2,680		2,680	13
2002-06	2,680		2,680		2,680	14	0		0		0	3	0		0		0		0	3	2,680		2,680		2,680	14
2003-07	2,680		2,680		2,680	15	0		0		0	3	0		0		0		0	3	2,680		2,680		2,680	15
2004-08	2,680		2,680		2,680		0		0		0	3	0		0		0		0	3	2,680		2,680		2,680	
2005-09	2,680		2,680		2,680		0		0		0	3	0		0		0		0	3	2,680		2,680		2,680	
2006-10																										
2007-11																										
2008-12																										
2009-13																										
2010-14																										
2011-15																										
Excess Extractions																										
2005-09			0	*					0	*																

06

TABLE NO. 13
ANNUAL ACCOUNTING OF EXTRACTIONS FROM THE SAN BERNARDINO BASIN AREA
AND DELIVERIES TO EACH SERVICE AREA BY
THE REGENTS OF UNIVERSITY OF CALIFORNIA

- 1 Adjusted Right as determined and reported to the Court in the Annual Report of the Western-San Bernardino Watermaster for Calendar Year 1971 in Table No. 9, page 27.
 - 2 Maximum allowable for the five-year period is the same as the five-year-period Adjusted Right.
 - 3 Actual verified extractions from Table No. 3.
 - 4 Adjusted Right was not effective until January 1, 1972; thus the Adjusted Right for the period 1971-75 is more than the Adjusted Right for subsequent five-year periods.
 - 5 Excludes 58 acre-feet in 1997 of allowable additional extraction. See Footnote 6 on Table 13 Page 1c of 2.
 - 6 Excludes 58 acre-feet in 1997 and 54 acre-feet in 1998 of allowable additional extraction. See Footnotes 6 and 7 on Table 13 Page 1c of 2.
 - 7 Excludes 58 acre-feet in 1997, 54 acre-feet in 1998 and 50 acre-feet in 1999 of allowable additional extraction. See Footnotes 6-8 on Table 13 Page 1c of 2.
 - 8 Excludes 58 acre-feet in 1997, 54 acre-feet in 1998, 50 acre-feet in 1999 and 88 acre-feet of allowable additional extraction. See Footnotes 6-9 on Table 13 Page 1c of 2.
 - 9 Excludes 58 acre-feet in 1997, 54 acre-feet in 1998, 50 acre-feet in 1999, 88 acre-feet in 2000 and 81 acre-feet in 2001 of allowable additional extraction. See Footnotes 6-10 on Table 13 Page 1c of 2.
 - 10 Excludes 54 acre-feet in 1998, 50 acre-feet in 1999, 88 acre-feet in 2000, 81 acre-feet in 2001 and 82 acre-feet in 2002 of allowable additional extraction. See Footnotes 7-11 on Table 13 Page 1c of 2.
 - 11 Excludes 50 acre-feet in 1999, 88 acre-feet in 2000, 81 acre-feet in 2001 and 82 acre-feet in 2002 of allowable additional extraction. See Footnotes 8-11 on Table 13 Page 1c of 2.
 - 12 Excludes 88 acre-feet in 2000, 81 acre-feet in 2001 and 82 acre-feet in 2002 of allowable additional extraction. See Footnotes 9-11 on Table 13 Page 1c of 2.
 - 13 Excludes 81 acre-feet in 2001, 82 acre-feet in 2002, and 82 acre-feet in 2004 of allowable additional extraction. See Footnotes 10-12 on Table 13 Page 1c of 2.
 - 14 Excludes 82 acre-feet in 2002, and 82 acre-feet in 2004 of allowable additional extraction. See Footnotes 11-12 on Table 13 Page 1c of 2.
 - 15 Excludes 82 acre-feet in 2004 of allowable additional extraction. See Footnotes 11-12 on Table 13 Page 1c of 2.
- * Parentheses indicate that actual extractions are less than Adjusted Right.

TABLE NO. 14

ANNUAL ACCOUNTING FOR
 WESTERN MUNICIPAL WATER DISTRICT
 EXPORT OF EXTRACTIONS FROM SAN BERNARDINO BASIN AREA,
 COLTON BASIN AREA, AND RIVERSIDE BASIN AREA
 FOR USE WITHIN WESTERN ON LANDS THAT ARE NOT TRIBUTARY
 TO THE RIVERSIDE NARROWS
 (All Values in Acre-Feet)

		Calendar Years				
		2005	2006	2007	2008	2009
EXPORTS						
Adjusted Right		42,535	42,535	42,535	42,535	42,535
Actual Export	1	35,956	36,810	36,279	35,891	32,796
ACCUMULATED EXPORT	3	1,219,240	1,256,050	1,292,329	1,328,220	1,361,016
OBLIGATIONS						
New Export	2	(6,579)	(5,725)	(6,256)	(6,644)	(9,739)
ACCUMULATED NEW EXPORT	3	(269,485)	(275,210)	(281,466)	(288,110)	(297,849)

1 See Table 8 of Watermaster Report. (Data from Volume 6, Table A.)

2 Actual Export minus Adjusted Right, Parentheses indicate that the Actual Export is less than the Adjusted Right.

3 Accumulated values include amounts accumulated prior to Current 5-year Period.

TABLE NO. 15

ANNUAL ACCOUNTING FOR
 SAN BERNARDINO VALLEY MUNICIPAL WATER DISTRICT
 EXPORT OF EXTRACTIONS FROM SAN BERNARDINO BASIN AREA
 AND COLTON BASIN AREA FOR USE ON LANDS
 NOT WITHIN WESTERN NOR TRIBUTARY
 TO THE RIVERSIDE NARROWS
 (All Values in Acre-Feet)

	Calendar Years				
	2005	2006	2007	2008	2009
EXPORTS					
Adjusted Right	12,527	12,527	12,527	12,527	12,527
Actual Export 1	27,559	31,754	28,418	30,337	24,308
ACCUMULATED EXPORT	827,591	859,345	887,763	918,100	942,408
OBLIGATIONS					
New Export 2	15,032	19,227	15,891	17,810	11,781
ACCUMULATED NEW EXPORT 3	389,146	408,373	424,264	442,074	453,855

1 See Table 9. (Data from Volume 7, Table B)

2 Actual Export minus Adjusted Right.

3 Accumulated values include amounts accumulated prior to Current 5-year Period.

ANNUAL ACCOUNTING FOR
WESTERN MUNICIPAL WATER DISTRICT
EXTRACTIONS FROM COLTON BASIN AREA
FOR USE OUTSIDE SAN BERNARDINO VALLEY

(All Values in Acre-Feet)

		Calendar Years				
		2005	2006	2007	2008	2009
EXTRACTIONS						
Base Right	1	3,381	3,381	3,381	3,381	3,381
Actual Extractions	1	84	412	742	939	378
ACCUMULATED EXTRACTIONS	4	43,391	43,803	44,545	45,484	45,862
CREDITS						
Extraction	2	3,297	2,969	2,639	2,442	3,003
Total Credits		3,297	2,969	2,639	2,442	3,003
ACCUMULATED CREDITS	4	75,436	78,405	81,044	83,486	86,489
OBLIGATIONS						
Excess Extractions	3	0	0	0	0	0
Total Obligations		0	0	0	0	0
ACCUMULATED OBLIGATIONS	4	492	492	492	492	492
NET ACCUMULATED (CREDIT) OR OBLIGATION	4	(74,944)	(77,913)	(80,552)	(82,994)	(85,997)

1 See Table 4. (Data from Volume 2, Table 4)

2 Amounts which may be extracted without replenishment obligation, which in fact are not extracted, Equal to Base Right minus Actual Extraction

3 Actual Extraction minus Base Right.

4 Accumulated values include amounts accumulated prior to Current 5-year Period.

ANNUAL ACCOUNTING FOR
WESTERN MUNICIPAL WATER DISTRICT
EXTRACTIONS FROM
RIVERSIDE BASIN AREA
IN SAN BERNARDINO COUNTY
FOR USE OUTSIDE SAN BERNARDINO VALLEY
(All Values in Acre-Feet)

		Calendar Years				
		2005	2006	2007	2008	2009
EXTRACTIONS						
Base Right	1	21,085	21,085	21,085	21,085	21,085
Actual Extractions	1	9,400	12,869	8,603	12,878	16,538
ACCUMULATED EXTRACTIONS	4	421,539	434,408	443,011	455,889	472,427
CREDITS						
Extraction	2	11,685	8,216	12,482	8,207	4,547
Total Credits		11,685	8,216	12,482	8,207	4,547
ACCUMULATED CREDITS	4	316,436	324,652	337,134	345,341	349,888
OBLIGATIONS						
Excess Extractions	3	0	0	0	0	0
Total Obligations		0	0	0	0	0
ACCUMULATED OBLIGATIONS	4	0	0	0	0	0
NET ACCUMULATED (CREDIT) OR OBLIGATION						
	4	(316,436)	(324,652)	(337,134)	(345,341)	(349,888)

1 See Table 5.

2 Amounts which may be extracted without replenishment obligation, which in fact are not extracted, Equal to Base Right minus Actual Extraction

3 Actual Extraction minus Base Right.

4 Accumulated values include amounts accumulated prior to Current 5-year Period.

ANNUAL ACCOUNTING FOR
WESTERN MUNICIPAL WATER DISTRICT
EXTRACTIONS FROM
RIVERSIDE BASIN AREA
IN RIVERSIDE COUNTY
FOR USE OUTSIDE SAN BERNARDINO VALLEY
(All Values in Acre-Feet)

		Calendar Years				
		2005	2006	2007	2008	2009
EXTRACTIONS						
Base Right	1	29,633	29,633	29,633	29,633	29,633
Actual Extractions	1	32,737	31,026	38,237	31,205	35,519
ACCUMULATED						
EXTRACTIONS	6	1,023,946	1,054,972	1,093,209	1,124,414	1,159,933
CREDITS						
Extraction	2	0	0	0	0	0
Return from imported water		2,995	2,776	2,171	1,284	1,300
Return from Additional						
Local Water	7	0	0	0	0	2,907
Total Credits		2,995	2,776	2,171	1,284	4,207
ACCUMULATED						
CREDITS	6	103,414	106,190	108,361	109,645	113,852
OBLIGATIONS						
Excess Extractions	3	3,104	1,393	8,604	1,572	5,886
New Export	4	0	0	0	0	0
Land Use Conversion	5	579	579	579	579	579
Total Obligations		3,683	1,972	9,183	2,151	6,465
ACCUMULATED						
OBLIGATIONS	6	72,586	74,558	83,741	85,892	92,357
NET ACCUMULATED (CREDIT)						
OR OBLIGATION	6	(30,828)	(31,632)	(24,620)	(23,753)	(21,495)

1 See Table 6.

2 Amounts which may be extracted without replenishment obligation, which in fact are not extracted, Equal to Base Right minus Actual Extraction.

3 Actual Extraction minus Base Right.

4 See Table 14. To account for effect of New Export, 36% of [Total New Export less Total Excess Extractions] if greater than 0.

5 See Table 7.

6 Accumulated values include amounts accumulated prior to Current 5-year Period.

7 36% of [Actual Extractions (for Colton, Riverside North, and Riverside South Basins) less Actual Export less 11,564]

ANNUAL ACCOUNTING FOR
SAN BERNARDINO VALLEY MUNICIPAL WATER DISTRICT
EXTRACTIONS FROM SAN BERNARDINO BASIN AREA
(All Values in Acre-Feet)

	Calendar Years					
	2005	2006	2007	2008	2009	
EXTRACTIONS						
Adjusted Right	1	167,238	167,238	167,238	167,238	167,238
Actual Extractions	1	189,227	207,346	192,865	191,285	173,885
ACCUMULATED						
EXTRACTIONS	5	5,780,498	5,987,844	6,180,709	6,371,994	6,545,879
Under Extractions		0	0	0	0	0
Excess Extractions		21,989	40,108	25,627	24,047	6,647
TOTAL NEW EXPORT		<u>15,032</u>	<u>19,227</u>	<u>15,891</u>	<u>17,810</u>	<u>11,781</u>
From Safe Yield		0	0	0	0	5,134
From Excess Extractions		15,032	19,227	15,891	17,810	6,647
CREDITS						
Under Extraction	2	0	0	0	0	0
Replenishment		2,372 6	6,050 7	7,265 8	15,837 9	13,782 10
Return from						
Imported Water		1,305 11	1,490 12	2,354 13	1,509 14	1,364 15
Return from Excess Extractions Used in SBBA		221	3,944	806	0	0
Total Credits		<u>3,898</u>	<u>11,484</u>	<u>10,425</u>	<u>17,346</u>	<u>15,146</u>
ACCUMULATED CREDITS	5	405,728	417,212	427,637	444,983	460,129
OBLIGATIONS						
Excess Extractions less						
New Export from						
Excess Extractions if > 0	3	6,957	20,881	9,736	6,237	0
New Export	4					
from Safe Yield (36%)		0	0	0	0	1,848
from Excess Extractions		15,032	19,227	15,891	17,810	6,647
Total Obligations		<u>21,989</u>	<u>40,108</u>	<u>25,627</u>	<u>24,047</u>	<u>8,495</u>
ACCUMULATED OBLIGATIONS	5	144,578	184,686	210,313	234,360	242,855
NET ACCUMULATED (CREDIT) OR OBLIGATION						
	5	(261,150)	(232,526)	(217,324)	(210,623)	(217,274)

1 See Table 2 of Watermaster Report.

2 Amounts which may be extracted without replenishment obligation, which in fact are not extracted, Equal to Adjusted Right minus Adjusted Extractions.

3 Adjusted Extractions minus Adjusted Right.

4 See Table 15 of Watermaster Report.

5 Accumulated values include amounts accumulated prior to Current 5-year Period.

ANNUAL ACCOUNTING FOR
SAN BERNARDINO VALLEY MUNICIPAL WATER DISTRICT
EXTRACTIONS FROM SAN BERNARDINO BASIN AREA

- 6 *Total import of State Water Project water in 2005 by SBVMWD was 35,329 acre-feet. However, only this portion was recharged in the SBBA.*
- 7 *Total import of State Water Project water in 2006 by SBVMWD was 35,329 acre-feet. However, only this portion was recharged in the SBBA.*
- 8 *Total import of State Water Project water in 2007 by SBVMWD was 56,406 acre-feet. However, only this portion was recharged in the SBBA.*
- 9 *Total import of State Water Project water in 2008 by SBVMWD was 40,444 acre-feet. However, only this portion was recharged in the SBBA.*
- 10 *Total import of State Water Project water in 2009 by SBVMWD was 38,297 acre-feet. However, only this portion was recharged in the SBBA.*
- 11 *6,006 acre-feet of State Water Project water were delivered within the SBBA in 2005. However, only 3,624 acre-feet of this amount resulted in "new" Return Flow not already included in Safe Yield Calculation.*
- 12 *6,160 acre-feet of State Water Project water were delivered within the SBBA in 2006. However, only 4,139 acre-feet of this amount resulted in "new" Return Flow not already included in Safe Yield Calculation.*
- 13 *13,064 acre-feet of State Water Project water were delivered within the SBBA in 2007. However, only 6,540 acre-feet of this amount resulted in "new" Return Flow not already included in Safe Yield Calculation.*
- 14 *9,336 acre-feet of State Water Project water were delivered within the SBBA in 2008. However, only 4,192 acre-feet of this amount resulted in "new" Return Flow not already included in Safe Yield Calculation.*
- 15 *10,329 acre-feet of State Water Project water were delivered within the SBBA in 2009. However, only 3,789 acre-feet of this amount resulted in "new" Return Flow not already included in Safe Yield Calculation.*

TABLE NO. 17A

ANNUAL ACCOUNTING FOR
WESTERN MUNICIPAL WATER DISTRICT
EXTRACTIONS FROM SAN BERNARDINO BASIN AREA
(All Values in Acre-Feet)

		Calendar Years				
		2005	2006	2007	2008	2009
EXTRACTIONS						
Adjusted Right	1	0	0	0	0	0
Actual Extractions		0	0	2,459	0	0
ACCUMULATED						
EXTRACTIONS	3	0	0	2,459	2,459	2,459
CREDITS						
Replenishment	2	2,500	0	0	0	2,459
ACCUMULATED						
CREDITS		6,000	6,000	6,000	6,000	8,459
OBLIGATIONS						
Actual Extractions		0	0	2,459	0	0
ACCUMULATED						
OBLIGATIONS	3	0	0	2,459	2,459	2,459
NET ACCUMULATED (CREDIT)						
OR OBLIGATION		(6,000)	(6,000)	(3,541)	(3,541)	(6,000)

1 Adjusted right refers to Plaintiff exporters right to natural safe yield. Western does not share in the natural safe yield. Therefore, Western's Adjusted Right is 0. Western has the right, however, to extract water imported from the State Water Project for replenishment, pursuant to Paragraphs VI(b) 6 and XV(a) of the Judgment, and by agreement with the San Bernardino Valley Municipal Water District.

2 Total import of State Water Project Water by Western for replenishment pursuant to the 2004 Western-San Bernardino agreement for additional extraction by Western prepared in accordance with Paragraph VI(b)6 and XV(a) of the Judgment.

3 Accumulated values beginning in 2004, reflecting total amounts of imported water and total extractions. Net credit represents the amount by which replenishment has exceeded extractions. The amount of Net Credit water may be extracted by Western at any time, or transferred to any plaintiff in the action to extract in addition to whatever rights such transferee may have. To the extent permitted by agreement with San Bernardino Valley Municipal Water District, if extractions have been made prior to replenishment, the Net Obligation reflects the amount of future replenishment that must be made.

4 Transferred to City of Riverside. See Table No. 10 of Watermaster Report.

TABLE NO. 18

SUMMARY OF REPLENISHMENT OBLIGATIONS
WESTERN AND SAN BERNARDINO VALLEY
ACCUMULATED FROM 1971

(All Values in Acre-Feet)

WESTERN MUNICIPAL WATER DISTRICT

	San Bernardino Basin Area		Colton Basin Area 3	Riverside Basin Area In San Bernardino County 3	Riverside Basin Area In Riverside County 3
	Native 1	Imported 2			
Accumulated Credits	0	8,459	86,489	349,888	113,852
Accumulated Obligations	0	2,459	492	0	92,357
Net Accumulated (Credit) or Obligation	0	(6,000)	(85,997)	(349,888)	(21,495)
REPLENISHMENT REQUIRED	0	0	0	0	0

SAN BERNARDINO VALLEY MUNICIPAL WATER DISTRICT

	San Bernardino Basin Area	Colton Basin Area	Riverside Basin Area In San Bernardino County
Accumulated Credits 4	460,129	37,257	0
Accumulated Obligations 4	242,855	0	0
Net Accumulated (Credit) or Obligation 4	(217,274)	(37,257)	0
REPLENISHMENT REQUIRED	0	0	0

1 Reference Tables 10-13.

2 Reference Table 17A.

3 Reference Table 16.

4 Reference Table 17.