



**SAN BERNARDINO  
VALLEY** | A REGIONAL WATER  
AGENCY SINCE 1954

---

**BOARD OF DIRECTORS WORKSHOP - POLICY/ADMINISTRATION  
2:00 pm Thursday, September 7, 2023**

**In Person:**

380 East Vanderbilt Way  
San Bernardino, CA 92408

**Online via Zoom:**

<https://sbvmwd.zoom.us/j/89386241472>

Meeting ID: 893 8624 1472

**PASSCODE: 3802020**

**By Telephone:**

Dial-in Info: (877) 853 5247 US Toll-free

Meeting ID: 893 8624 1472

**PASSCODE: 3802020**

If you are unable to participate online or by telephone, you may also submit your comments and questions in writing for the District's consideration by sending them to [comments@sbvmwd.com](mailto:comments@sbvmwd.com) with the subject line "Public Comment Item #" (insert the agenda item number relevant to your comment) or "Public Comment Non-Agenda Item". Submit your written comments by **6:00 p.m. on Wednesday, September 6, 2023**. All public comments will be provided to the Board President and may be read into the record or compiled as part of the record.

**IMPORTANT PRIVACY NOTE:** Online participants **MUST** log in with a Zoom account. The Zoom app is a free download. Please keep in mind: (1) This is a public meeting; as such, the virtual meeting information is published on the World Wide Web and available to everyone. (2) Should you participate remotely via telephone, your telephone number will be your "identifier" during the meeting and available to all meeting participants; there is no way to protect your privacy if you elect to call in to the meeting.



**SAN BERNARDINO VALLEY MUNICIPAL WATER DISTRICT**  
380 E. Vanderbilt Way, San Bernardino, CA 92408

**BOARD OF DIRECTORS' WORKSHOP - POLICY/ADMINISTRATION**  
**2:00 PM Thursday, September 7, 2023**

**CALL TO ORDER**

**1) INTRODUCTIONS**

**2) PUBLIC COMMENT**

Members of the public may address the Board regarding any item within the subject matter jurisdiction of the Board; however, no action may be taken on off-agenda items except as authorized by law. Each speaker is limited to a maximum of three (3) minutes.

**3) DISCUSSION AND POSSIBLE ACTION ITEMS**

3.1 State Legislative Update(20 min) - Page 2  
[Staff Memo - State Legislative Update](#)

3.2 Consider Authorization to Purchase Office Furniture - Administration Office (20 min) - Page 4  
[Staff Memo - Consider Authorization to Purchase Office Furniture - Administration Office](#)  
[Office 1 - GMBI Quote 217127](#)  
[Office 2 - GMBI Quote 217126](#)  
[Office 3 - GMBI Quote 217121](#)  
[Workspace reconfiguration - GMBI Quote 219953](#)

3.3 ACWA Committee Consideration Forms for 2024-25 Term (20 min) - Page 40  
[Staff Memo - ACWA Committee Consideration Forms for 2024-25 Term](#)  
[ACWA Committee Information](#)

**4) FUTURE BUSINESS**

**5) ADJOURNMENT**

**DATE:** September 7, 2023  
**TO:** Board of Directors' Workshop – Policy/Administration  
**FROM:** Kelly Malloy, Strategic Communications Manager  
**SUBJECT:** State Legislative Update

---

**Staff Recommendation**

Receive and file.

**Summary**

The District continues monitoring legislative activities through Federal lobbyists, Innovative Federal Strategies, Inc. and State lobbyist firm, The Gualco Group. Both efforts include active legislation tracking, participating in various industry association discussions, facilitating meetings with legislative and regulatory elected officials and staff, and other activities. Representatives from The Gualco Group will participate in the workshop and provide updates on current significant State legislation.

**Background**

The Gualco Group, Inc., is the District's State lobbyist in Sacramento. Innovative Federal Strategies, Inc. is the District's Federal lobbyist in Washington, D.C. Given the different cyclical timing, State and Federal legislative advocates will alternate giving bi-monthly presentations at the Policy/Administration workshop via Zoom to provide an update on current, significant legislative activity.

State activities include anticipated changes to legislative leadership, various bond considerations for 2024, and monitoring bills as the first of the two-year session ends.

**District Strategic Plan Application**

The District's Federal and State legislation program aligns with the District's mission of *working collaboratively to provide a reliable and sustainable water supply to support the changing needs of our region's people and environment*. By staying active and engaged in legislative issues, the District can establish a presence and build relationships with our Federal and State legislators

which helps the District achieve its goal to *Establish San Bernardino Valley as an industry leader, recognized locally by the public and our peers for the leadership and positive impact we have within our region and the state.*

**Fiscal Impact**

There is no fiscal impact related to this update.

**DATE:** September 7, 2023  
**TO:** Board of Directors' Workshop - Policy/Administration  
**FROM:** Melissa Zoba, Chief Information Officer  
**SUBJECT:** Consider Authorization to Purchase Office Furniture – Administration office

**Staff Recommendation**

Staff recommends the Board of Directors authorize the purchase of office furniture and installation services in the amount of \$29,092.90.

**Summary**

Staff has obtained quotes for the purchase and installation of office furniture for three (3) staff offices and a quote for the reconfiguration and installation of existing office furnishings to create a common area workspace. The proposed Administration office furnishings include workspace surfaces, storage units, and seating. The total amount of this project is \$29,062.90 and includes the furnishings, installation, and removal/disposal of any unused, original furniture.

Location	Amount
Office 1	\$9,500.86
Office 2	\$8,644.81
Office 3	\$7,884.98
Reconfiguration of Common Area Workspace	\$3,032.25
<b>Total</b>	<b>\$29,062.90</b>

**Background**

The District Administration building was completed in 2008 and, at that time, housed an administrative staff of 15 employees in 15 offices. Since 2017, several interior remodeling projects have been completed to accommodate the District's growing workforce and improve common area workspaces. The Administration building now has 22 offices that house 22 staff

members, and a large open workspace area that supports several field staff on an as-needed basis, and 2-5 interns throughout the year. As new work areas have been completed, new furnishings have been installed and existing workstations have been repurposed whenever possible. However, several offices with original furnishings remain and show a great deal of wear and tear.

In 2020, the District began the process of replacing the original, worn furnishings throughout the Administration office including carpeting, paint, meeting space furniture, and employee workstations. Each year thereafter, staff has included funds in the budget to replace or make improvements to interior furnishings, completing approximately three offices per year.

Staff has received quotes from Goforth & Marti Business Interiors (GMBI) for three (3) staff office workstations that include new desks/work surfaces, storage, and seating. A quote is also included to repurpose some of the existing modular furnishings to create a common area workspace that will be used for interns and field staff when they are onsite. The total amount of the project is \$29,062.90 and includes all furnishings, installation, and removal/disposal of any original, worn furniture that is not being repurposed.

The preferred vendor, GMBI, is headquartered in Riverside, CA and is a certified Women's Business Enterprise. GMBI is a member of the US Green Building Council and has operated on an environmentally sensitive paperless initiative since 1998. GMBI also holds numerous State and County procurement contracts that the District can "piggyback" on to take advantage of the most competitive government pricing. The quotes provided by GMBI for this project are based on the County of San Bernardino Purchasing Contract #22-1283.

### **Fiscal Impact**

The total amount of this project including furnishings, installation, and removal/disposal of old furnishings is \$29,062.90. Funds for this expenditure are included in the approved 2023-2024 General Fund Budget under Line Item 6250, Office Equipment.

### **Attachments**

Goforth & Marti quotes:

- Office 1 – Quote 217127
- Office 2 – Quote 217126
- Office 3 – Quote 217121
- Workspace reconfiguration – Quote 219953



elevate your workplace™



<b>Project ID / Who &amp; Where</b>	<b>Date:</b>	<b>Quotation</b>
OFFICE - 2ND FL NATIONAL	8/16/2023	<b>217127</b>

<b>BILL TO:</b>	1242	<b>SHIP TO:</b>	
SB VALLEY MUNICIPAL WATER DIST 380 EAST VANDERBILT WAY		SB (VANDERBILT) SB VALLEY MUNICIPAL WATE 380 EAST VANDERBILT WAY	
SAN BERNARDINO CA 92408		SAN BERNARDINO CA 92408	
MELISSA ZOBA Phone: (909)387-9228 Fax: (909)387-9247		MELISSA ZOBA Phone: (909)387-9228 Fax: (909)387-9247	

<b>Product Counts:</b>	Systems	0	Desk Units	1	Tables	0	Files	1	Chairs	3	Storage	0	Ancillary	0
------------------------	---------	---	------------	---	--------	---	-------	---	--------	---	---------	---	-----------	---

<b>GRAND TOTAL</b>	<b>\$9,500.86</b>
--------------------	-------------------

**Product Summary / Scope of Work**

COUNTY OF SAN BERNARDINO CONTRACT# 22-1283

QUOTE FOR: NATIONAL, OFS & ELEVATE PRODUCT

\*\*\*PREVAILING WAGE\*\*\*

FOR: OFFICE - 2ND FL NATIONAL

LEAD TIME: 6-8 WEEKS

SCOPE OF WORK:

- 1) G/M TO RECEIVE AND INSPECT PRODUCT.
- 2) G/M TO REMOVE AND DISPOSE OF OLD PRIVATE OFFICE PRODUCT.
- 3) G/M TO BRING TO SITE AND SET NATIONAL, OFS & ELEVATE PRODUCT INTO PLACE.
- 4) PLEASE CONTACT MELISSA ZOBA (909) 387-9228 TO SCHEDULE SERVICES.

\*\*DESIGN SERVICES BREAKDOWN\*\*

PREVAILING WAGE NON TAXABLE DESIGN SERVICES: (4.74) HRS @ \$55.00/HR = \$260.70

\*\*G/M WILL HOLD PRODUCT FOR UP TO (2) WEEKS AT OUR WAREHOUSE FREE OF CHARGE. ANY PRODUCT REMAINING IN OUR WAREHOUSE AFTER THIS PERIOD WILL INCUR STORAGE FEES

\*\*NOTE: QUOTE WILL NEED TO BE ADJUSTED IF SERVICES TO TAKE PLACE AFTER BUSINESS HOURS, OR DURING THE WEEKEND\*\*

Account Executive: Alan Hernandez ( <a href="mailto:ahernandez@gmbi.net">ahernandez@gmbi.net</a> )	Project PAS: Brandi Lukosz
AMA: Cindy Ramirez ( <a href="mailto:cramirez@gmbi.net">cramirez@gmbi.net</a> )	Page: 1

**800-686-6583 800-686-6583 Fax: 951-684-0837**  
 G/M Business Interiors  
 1099 W. La Cadena Drive, Riverside CA, 92501  
<http://www.gmbi.net>

BOM

A

Who/What/Where

			List	List Ext	Sell	Sell Ext
LOT	1	OFFICE	17,433.00	17,433.00	6,805.69	6,805.69

## Description:

			Non-Tax Srvc.	Taxable Srvc.	Freight	Design Fee
(01) EA NATIONAL WAVEWORKS PRIVATE OFFICE WITH HEIGHT ADJUSTABLE BASE, (02) EA NATIONAL WAVEWORKS OVERHEAD STORAGE & WARDROBE, (01) EA NATIONAL PEDESTAL, B/B/F, & (02) EA OFS MINGLE SIDE CHAIRS			.00	.00	.00	.00

BOM: See Attached Bill of Materials

Piece Count: 29

BOM

B

Who/What/Where

			List	List Ext	Sell	Sell Ext
LOT	0	Z G/M Services	.00	.00	.00	.00

## Description:

			Non-Tax Srvc.	Taxable Srvc.	Freight	Design Fee
<p><b>G/M Furniture Planning Services, if applicable, include field measurements, drawing AutoCAD building shells, developing typical workstations and private office standards, space planning typicals into the floorplan, developing furniture color schemes, order specifications and receiving client approvals for all drawings and color schemes for order entry.</b></p> <p><b>G/M Project Management Services include drawings and field measure checks, order scheduling &amp; routing, electrical consulting with contractors, field checks, monitoring construction progress along with delivery, assembly, punchlist coordination through final completion.</b></p> <p><b>G/M Project Services include receiving and inspecting of each product, shipping damage adjudication with vendors, transporting product if applicable, staging of products, delivery, setting in place of all furniture, level clean and polishing of all items, vacuum floors and recycling of all waste products associated with the furniture project.</b></p> <p><b>G/M Punchlist Services include formulation of the project punchlist, ordering and receiving of punchlist products, and delivery and assembly to finalize the punchlist and project.</b></p> <p><b>G/M Warranty Services Department is provided to offer clients our no-charge warranty service work for all furniture protected under valid factory warranties. G/M maintains electronic copies of our Client's invoices for warranty enforcement. For service requests, our Warranty Department may be contacted via e-mail at <a href="mailto:warranty@gmbi.net">warranty@gmbi.net</a></b></p>			1,715.00	114.00	.00	260.70

BOM: See Attached Bill of Materials

Piece Count:

Account Executive: Alan Hernandez ([ahernandez@gmbi.net](mailto:ahernandez@gmbi.net))AMA: Cindy Ramirez ([cramirez@gmbi.net](mailto:cramirez@gmbi.net))

Project PAS: Brandi Lukosz

Page: 2

800-686-6583 800-686-6583 Fax: 951-684-0837

G/M Business Interiors

1099 W. La Cadena Drive, Riverside CA, 92501

<http://www.gmbi.net>



**Featured Product of the Month**

GEIGER JD WATERFALL TABLE BY DATESWEISER

G/M accepts credit cards at 0% for purchases up to \$10,000  
Purchases over \$10,000 requires a surcharge of 2.75%

<b>Product Subtotal:</b>	<b>\$6,805.69</b>
<b>Services (Taxable)</b>	<b>\$114.00</b>
<b>Freight (Taxable)</b>	<b>\$0.00</b>
<b>Services (Non-Taxable)</b>	<b>\$1,715.00</b>
<b>Design Services (Non-Taxable)</b>	<b>\$260.70</b>
<b>Taxable Subtotal:</b>	<b>\$6,919.69</b>
<b>Non-Taxable Subtotal:</b>	<b>\$1,975.70</b>
<b>Sales Tax (8.750%)</b>	<b>\$605.47</b>
<b>Total:</b>	<b>\$9,500.86</b>

<b>Terms:</b>		
<b>Net 60 Days</b>	<b>100%</b>	<b>\$9,500.86</b>

I have reviewed the quote, the bill of materials, the drawings (if applicable), the color cards (if applicable), and other associated exhibits for my order.

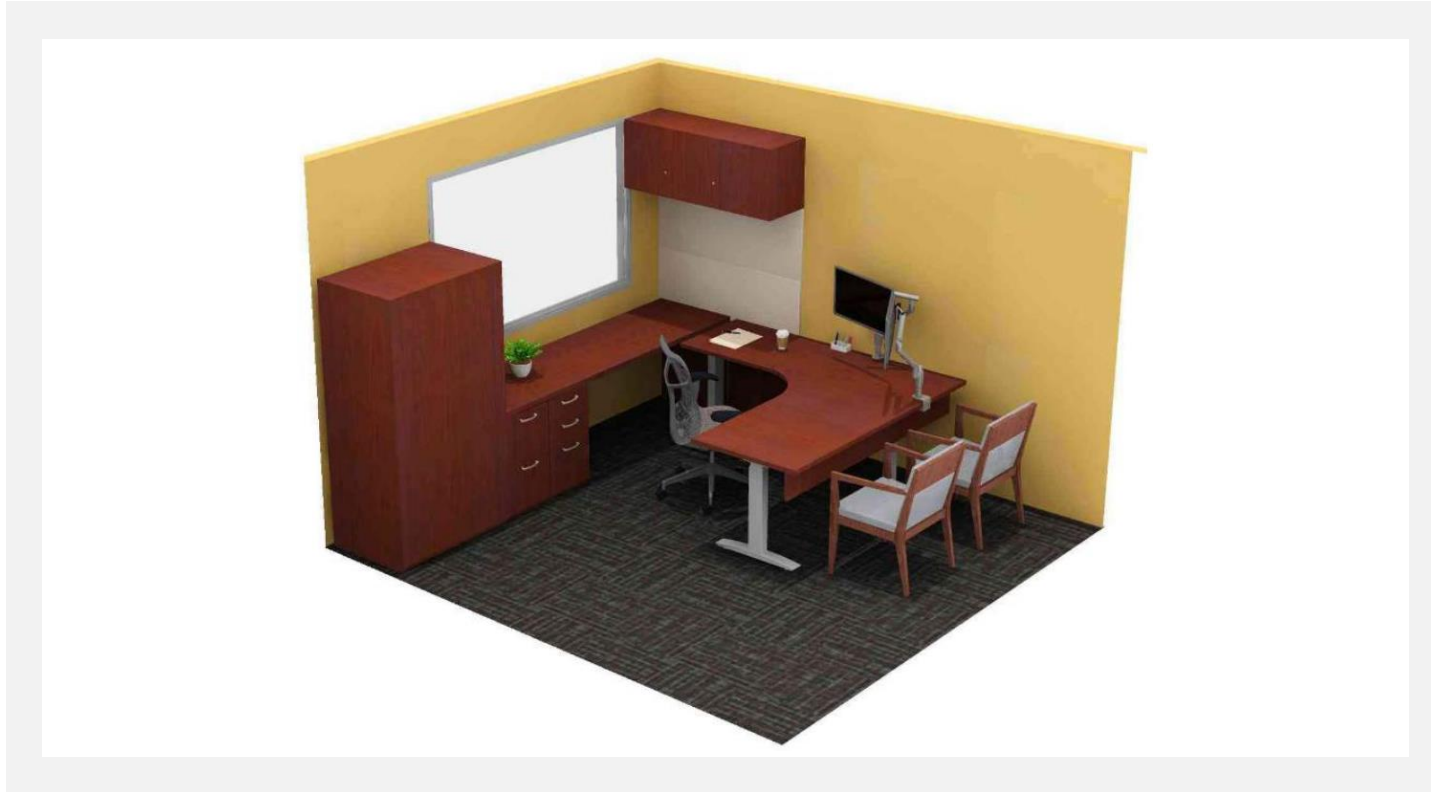
- I approve the colors, fabrics, and finishes as previously selected and correct as shown on the attached exhibit.
- I am satisfied that the product I have selected is the correct size and is suitable and will perform for its intended purpose.
- I am aware this product is manufactured to order and is not returnable to G/M or to the manufacturer.
- I understand that legal title to the product will transfer upon delivery to my commercial or residential location and all associated labor is taxable until title transfers.
- I am aware additional costs charged for inside delivery, staging, setting in place, assembly, leveling, cleaning, polishing, recycling of waste materials are separately stated and are elected as an additional contract option.
- I am aware of the grand total price of this contract as shown on this quote.
- G/M is ordering your furniture from a variety of manufacturers to be aggregated and received into our G/M operated warehouse. Once the final portion of your order has been received, a "ready to deliver" notification will be sent to you. G/M, at this point, will graciously, store your complete order for up to two weeks at no charge. If for some reason you cannot accept a timely delivery within two weeks, a quote for one month's handling and storage shall be calculated and forwarded to you.
- This quote is valid for 30 days.

<b>Approved by:</b>			
	Signature	Print Name/Title	Date

Account Executive: Alan Hernandez ( <a href="mailto:ahernandez@gmbi.net">ahernandez@gmbi.net</a> )	Project PAS: Brandi Lukosz
AMA: Cindy Ramirez ( <a href="mailto:cramirez@gmbi.net">cramirez@gmbi.net</a> )	Page: 3

**SB Valley Municipal Water District**  
Quote# 217127

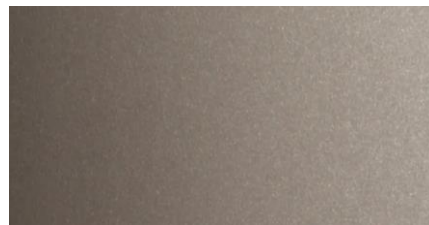
**Office – 2<sup>nd</sup> Floor**  
Private Office



National  
**Waveworks Private Office  
with Storage**



Surface & Storage Finish:  
Cordovan



Pull Finish:  
Satin Nickel Metallic



Desk Leg Finish:  
Silver



Tackable Fabric Finish:  
Repetition Tawny

**SB Valley Municipal Water District**  
Quote# 217127

**Office – 2<sup>nd</sup> Floor**  
Seating



Seat & Back Finish:  
Arc Com Apollo Granite # 2



Leg & Arm Finish  
MLC Sienna

_____	_____
-------	-------



SB VALLEY MUNICIPAL WATER  
 DIST OFFICE - 2ND FL NATIONAL  
 Quote # 217127  
 Department: OFFICE  
 PO #  
 Sales Order #

8/16/2023  
 9:45:03 AM

Discount %

Item	Qty	Contract	Product	List Price		Sell Price		Discount %
				Unit	Extended	Unit	Extended	
ELEVATE								
1	1		GMWDPW Elevate™Wireless Desk Power • White	123.00	123.00	39.10	39.10	%
			Tag: OFFICE					
2	1		GMSPW Elevate™Surge Protector • White	82.00	82.00	26.09	26.09	%
			Tag: OFFICE					
3	1		EL90TLBS Elevate™90° Height Adjustable Base • Silver	1,960.00	1,960.00	627.92	627.92	%
			Tag: OFFICE					
GMHARDWARE								
4	2	FOR MODESTY & UNUSUAL APPLICATIONS	GM HARDWARE GM L-BRACKET	.00	.00	.80	1.60	%
			Tag: OFFICE					
5	1	(1) PER WALL STRIP WALL START OR OH	GMHARDWARE GM WALL ANCHORS	.00	.00	6.82	6.82	%
			Tag: OFFICE					
NATIONAL								
6	1		98K06UCM PERKS, UNDERSURFACE CABLE MANAGER, PKG 5	79.00	79.00	31.60	31.60	60.00 %
			Tag: OFFICE					
7	1	N2490WSSDL	WWN2490WSSDL WAVEWORKS,24DX90W,SURFACE,RECTANGULAR,HPL E • SUPPORT • EXTENSION NCW • RIM PROFILE • REED,CORDOVAN X • GROMMET • NO GROMMET X • WIRE MANAGE   • NO WIRE MANAGER X • MODIFIED DEP' • NO MODIFIED DEPTH (STANDARD) 87.5000 • MODIFIED WID' • 87 1/2 (2222.5 MM) STD • TOP LAMINATE • STANDARD LAMINATE CW • LAMINATE COL • CORDOVAN	986.00	986.00	394.40	394.40	60.00 %
			Tag: OFFICE					



SB VALLEY MUNICIPAL WATER  
 DIST OFFICE - 2ND FL NATIONAL  
 Quote # 217127  
 Department: OFFICE  
 PO #  
 Sales Order #

8/16/2023  
 9:45:03 AM

Discount %

Item	Qty	Contract	Product	List Price		Sell Price		Discount %
				Unit	Extended	Unit	Extended	
NATIONAL								
8	1	2430WSSDL	WW2430WSSVDL	311.00	311.00	124.40	124.40	60.00 %
			WAVEWORKS,24DX30W,SURFACE,RECT,VERT GRAIN,HPL					
		E	• SUPPORT • EXTENSION					
		NCW	• RIM PROFILE • REED,CORDOVAN					
		X	• GROMMET • NO GROMMET					
		X	• WIRE MANAGEI • NO WIRE MANAGER					
		X	• MODIFIED DEP • NO MODIFIED DEPTH (STANDARD)					
		X	• MODIFIED WID • NO MODIFIED WIDTH (STANDARD)					
		STD	• TOP LAMINATE • STANDARD LAMINATE					
		CW	• LAMINATE COL • CORDOVAN					
		Tag: OFFICE						
9	1	4272WSCED	WW4272WSCEDRL7	1,563.00	1,563.00	625.20	625.20	60.00 %
		RL7	WAVEWORKS,42DX72W,SURFACE,EXT CORNER,RIGHT,HPL					
		E	• SUPPORT • EXTENSION					
		NCW	• RIM PROFILE • REED,CORDOVAN					
		X	• GROMMET • NO GROMMET					
		X	• WIRE MANAGEI • NO WIRE MANAGER					
		STD	• TOP LAMINATE • STANDARD LAMINATE					
		CW	• LAMINATE COL • CORDOVAN					
		Tag: OFFICE						
10	1	2315PUFFL	WW2315PUFFL	1,036.00	1,036.00	414.40	414.40	60.00 %
			WAVEWORKS,23DX15W,PEDESTAL,FILE/FILE,UNDERSURFACE,LAMINATE					
		73SN	• PULL • SWEEP,SATIN NICKEL METALLIC					
		X	• GROMMET • NO GROMMET					
		KS1B	• LOCK • SPECIFY 1 BLACK CORE SEPARATE					
		CW	• DRAWER/DOOF • CORDOVAN					
		CW	• CHASSIS LAMIN • CORDOVAN					
		Tag: OFFICE						
11	1	2315PUBBFL	WW2315PUBBFL	1,036.00	1,036.00	414.40	414.40	60.00 %
			WAVEWORKS,23DX15W,PEDESTAL,BOX/BOX/FILE,UNDERSURFACE,LAMINATE					
		73SN	• PULL • SWEEP,SATIN NICKEL METALLIC					
		X	• GROMMET • NO GROMMET					
		KS1B	• LOCK • SPECIFY 1 BLACK CORE SEPARATE					
		CW	• DRAWER/DOOF • CORDOVAN					
		CW	• CHASSIS LAMIN • CORDOVAN					
		Tag: OFFICE						



SB VALLEY MUNICIPAL WATER  
 DIST OFFICE - 2ND FL NATIONAL  
 Quote # 217127  
 Department: OFFICE  
 PO #  
 Sales Order #

8/16/2023  
 9:45:03 AM

Discount %

Item	Qty	Contract	Product	List Price		Sell Price		Discount %
				Unit	Extended	Unit	Extended	
NATIONAL								
12	1	6908MPW	WW6908MPL	300.00	300.00	120.00	120.00	60.00 %
			WAVEWORKS,69WX8H,MODESTY PANEL,1/3 HEIGHT,LAMINATE					
		E	• SUPPORT • EXTENSION					
		X	• MODIFIED WID • NO MODIFIED WIDTH (STANDARD)					
		CW	• CHASSIS LAMIN • CORDOVAN					
		Tag: OFFICE						
13	1	4818SOHML	WW4818SOHML	1,078.00	1,078.00	431.20	431.20	60.00 %
			WAVEWORKS,48WX18H,OVERHEAD,DOORS,WALL MOUNT,LAMINATE					
		KS2B	• LOCK • SPECIFY 2 BLACK CORE SEPARATE					
		CW	• DRAWER/DOOF • CORDOVAN					
		CW	• CHASSIS LAMIN • CORDOVAN					
		Tag: OFFICE						
14	1	N3669VSWHL	WWN3669VSWHL	3,836.00	3,836.00	1,534.40	1,534.40	60.00 %
			WAVEWORKS,36WX69H,WARDROBE/STORAGE,DBL DOOR,LAMINATE					
		KS1B	• LOCK • SPECIFY 1 BLACK CORE SEPARATE					
		CW	• DRAWER/DOOF • CORDOVAN					
		CW	• CHASSIS LAMIN • CORDOVAN					
		Tag: OFFICE						
15	1	2328EPL	WW2328EPL	344.00	344.00	137.60	137.60	60.00 %
			WAVEWORKS,23DX28H,END PANEL,LAMINATE					
		X	• GROMMET • NO GROMMET					
		X	• MODIFIED DEP • NO MODIFIED DEPTH (STANDARD)					
		CW	• CHASSIS LAMIN • CORDOVAN					
		Tag: OFFICE						
16	2	4819TBRA	NAC4819TBRA	563.00	1,126.00	225.20	450.40	60.00 %
			ACCESSORIES,47 7/8WX19 1/2H,TACKBOARD,RAILROAD					
		A	• TACKBOARD F/ • GRADE A					
		3744	• FABRIC PATTEI • REPETITION TAWNY					
		Tag: OFFICE						
17	2	1527MPVL	WW1527MPVL	161.00	322.00	64.40	128.80	60.00 %
			WAVEWORKS,15WX27H,PEDESTAL BACK PANEL,VERT GRAIN,LAM					
		CW	• CHASSIS LAMIN • CORDOVAN					
		Tag: OFFICE						
18	6	NCCB001	NCCB003	29.00	174.00	11.60	69.60	60.00 %
			CASEGOODS,LOCK CORE WITH KEY,BLACK,NO 003					
			•					
			•					
		Tag: OFFICE						





SB VALLEY MUNICIPAL WATER  
 DIST OFFICE - 2ND FL NATIONAL  
 Quote # 217127  
 Department: OFFICE  
 PO #  
 Sales Order #

8/16/2023  
 9:45:03 AM

Discount %

Item	Qty	Contract	Product	List Price		Sell Price		Discount %
				Unit	Extended	Unit	Extended	
NATIONAL								
19	1		NAC0613ST ACCESSORIES,6DX13W,BOX DRWR CONVENIENCE TRAY,BLACK	37.00	37.00	14.80	14.80	60.00 %
			•					
			•					
			Tag: OFFICE					
OFS								
20	2		F47437 Mingle 22.5x27x33.5 Side Chair Sloped Square Extended Arm	1,520.00	3,040.00	606.48	1,212.96	60.10 %
			MLC	• Finish		• Sienna (MLC)		
			6	• Grade		• Grade 6 Material		
			ETC6	• Grade 6 Material		• Non-Carded Grade 6 Material		
			TOR	•		• ARC COM APOLLO GRANITE #2		
			Tag: OFFICE					

Product Subtotal: \$6,805.69



elevate your workplace™



<b>Project ID / Who &amp; Where</b>	<b>Date:</b>	<b>Quotation</b>
OFFICE - 2ND FL NATIONAL	8/15/2023	<b>217126</b>

<b>BILL TO:</b>	1242	<b>SHIP TO:</b>	
SB VALLEY MUNICIPAL WATER DIST 380 EAST VANDERBILT WAY		SB (VANDERBILT) SB VALLEY MUNICIPAL WATE 380 EAST VANDERBILT WAY	
SAN BERNARDINO CA 92408		SAN BERNARDINO CA 92408	
MELISSA ZOBA Phone: (909)387-9228 Fax: (909)387-9247		MELISSA ZOBA Phone: (909)387-9228 Fax: (909)387-9247	

<b>Product Counts:</b>	Systems	0	Desk Units	1	Tables	0	Files	1	Chairs	3	Storage	0	Ancillary	0
------------------------	---------	---	------------	---	--------	---	-------	---	--------	---	---------	---	-----------	---

<b>GRAND TOTAL</b>	<b>\$8,644.81</b>
--------------------	-------------------

**Product Summary / Scope of Work**

COUNTY OF SAN BERNARDINO CONTRACT# 22-1283

QUOTE FOR: NATIONAL, OFS & ELEVATE PRODUCT

\*\*\*PREVAILING WAGE\*\*\*

FOR: OFFICE - 2ND FL NATIONAL

LEAD TIME: 6-8 WEEKS

SCOPE OF WORK:

- 1) G/M TO RECEIVE AND INSPECT PRODUCT.
- 2) G/M TO REMOVE AND DISPOSE OF OLD PRIVATE OFFICE PRODUCT.
- 3) G/M TO BRING TO SITE AND SET NATIONAL, OFS & ELEVATE PRODUCT INTO PLACE.
- 4) PLEASE CONTACT MELISSA ZOBA (909) 387-9228 TO SCHEDULE SERVICES.

\*\*DESIGN SERVICES BREAKDOWN\*\*

PREVAILING WAGE NON TAXABLE DESIGN SERVICES: (4.09) HRS @ \$55.00/HR = \$224.95

\*\*G/M WILL HOLD PRODUCT FOR UP TO (2) WEEKS AT OUR WAREHOUSE FREE OF CHARGE. ANY PRODUCT REMAINING IN OUR WAREHOUSE AFTER THIS PERIOD WILL INCUR STORAGE FEES

\*\*NOTE: QUOTE WILL NEED TO BE ADJUSTED IF SERVICES TO TAKE PLACE AFTER BUSINESS HOURS, OR DURING THE WEEKEND\*\*

Account Executive: Alan Hernandez ( <a href="mailto:ahernandez@gmbi.net">ahernandez@gmbi.net</a> )	Project PAS: Brandi Lukosz
AMA: Cindy Ramirez ( <a href="mailto:cramirez@gmbi.net">cramirez@gmbi.net</a> )	Page: 1

**800-686-6583 800-686-6583 Fax: 951-684-0837**  
 G/M Business Interiors  
 1099 W. La Cadena Drive, Riverside CA, 92501  
<http://www.gmbi.net>



BOM

A

## Who/What/Where

		List	List Ext	Sell	Sell Ext
LOT	1 OFFICE	15,213.00	15,213.00	5,917.69	5,917.69

## Description:

(01) EA NATIONAL WAVEWORKS PRIVATE OFFICE WITH HEIGHT ADJUSTABLE BASE, (02) EA NATIONAL WAVEWORKS BOOKCASES, (01) EA NATIONAL PEDESTAL, B/B/F, & (02) EA OFS MINGLE SIDE CHAIRS

Non-Tax Srvc.	Taxable Srvc.	Freight	Design Fee
.00	.00	.00	.00

BOM: See Attached Bill of Materials

Piece Count: 28

BOM

B

## Who/What/Where

		List	List Ext	Sell	Sell Ext
LOT	0 Z G/M Services	.00	.00	.00	.00

## Description:

G/M Furniture Planning Services, if applicable, include field measurements, drawing AutoCAD building shells, developing typical workstations and private office standards, space planning typicals into the floorplan, developing furniture color schemes, order specifications and receiving client approvals for all drawings and color schemes for order entry.

G/M Project Management Services include drawings and field measure checks, order scheduling & routing, electrical consulting with contractors, field checks, monitoring construction progress along with delivery, assembly, punchlist coordination through final completion.

G/M Project Services include receiving and inspecting of each product, shipping damage adjudication with vendors, transporting product if applicable, staging of products, delivery, setting in place of all furniture, level clean and polishing of all items, vacuum floors and recycling of all waste products associated with the furniture project.

G/M Punchlist Services include formulation of the project punchlist, ordering and receiving of punchlist products, and delivery and assembly to finalize the punchlist and project.

G/M Warranty Services Department is provided to offer clients our no-charge warranty service work for all furniture protected under valid factory warranties. G/M maintains electronic copies of our Client's invoices for warranty enforcement. For service requests, our Warranty Department may be contacted via e-mail at [warranty@gmbi.net](mailto:warranty@gmbi.net)

Non-Tax Srvc.	Taxable Srvc.	Freight	Design Fee
1,843.00	130.00	.00	224.95

BOM: See Attached Bill of Materials

Piece Count:

Account Executive: Alan Hernandez ([ahernandez@gmbi.net](mailto:ahernandez@gmbi.net))AMA: Cindy Ramirez ([cramirez@gmbi.net](mailto:cramirez@gmbi.net))

Project PAS: Brandi Lukosz

Page: 2

800-686-6583 800-686-6583 Fax: 951-684-0837

G/M Business Interiors

1099 W. La Cadena Drive, Riverside CA, 92501

<http://www.gmbi.net>

**Featured Product of the Month**

GEIGER JD WATERFALL TABLE BY DATESWEISER

G/M accepts credit cards at 0% for purchases up to \$10,000. Purchases over \$10,000 require a surcharge of 2.75%.

<b>Product Subtotal:</b>	<b>\$5,917.69</b>
<b>Services (Taxable)</b>	<b>\$130.00</b>
<b>Freight (Taxable)</b>	<b>\$0.00</b>
<b>Services (Non-Taxable)</b>	<b>\$1,843.00</b>
<b>Design Services (Non-Taxable)</b>	<b>\$224.95</b>
<b>Taxable Subtotal:</b>	<b>\$6,047.69</b>
<b>Non-Taxable Subtotal:</b>	<b>\$2,067.95</b>
<b>Sales Tax (8.750%)</b>	<b>\$529.17</b>
<b>Total:</b>	<b>\$8,644.81</b>

<b>Terms:</b>		
<b>Net 60 Days</b>	<b>100%</b>	<b>\$8,644.81</b>

I have reviewed the quote, the bill of materials, the drawings (if applicable), the color cards (if applicable), and other associated exhibits for my order.

- I approve the colors, fabrics, and finishes as previously selected and correct as shown on the attached exhibit.
- I am satisfied that the product I have selected is the correct size and is suitable and will perform for its intended purpose.
- I am aware this product is manufactured to order and is not returnable to G/M or to the manufacturer.
- I understand that legal title to the product will transfer upon delivery to my commercial or residential location and all associated labor is taxable until title transfers.
- I am aware additional costs charged for inside delivery, staging, setting in place, assembly, leveling, cleaning, polishing, recycling of waste materials are separately stated and are elected as an additional contract option.
- I am aware of the grand total price of this contract as shown on this quote.
- G/M is ordering your furniture from a variety of manufacturers to be aggregated and received into our G/M operated warehouse. Once the final portion of your order has been received, a "ready to deliver" notification will be sent to you. G/M, at this point, will graciously, store your complete order for up to two weeks at no charge. If for some reason you cannot accept a timely delivery within two weeks, a quote for one month's handling and storage shall be calculated and forwarded to you.
- This quote is valid for 30 days.

**Approved by:**

\_\_\_\_\_  
Signature

\_\_\_\_\_  
Print Name/Title

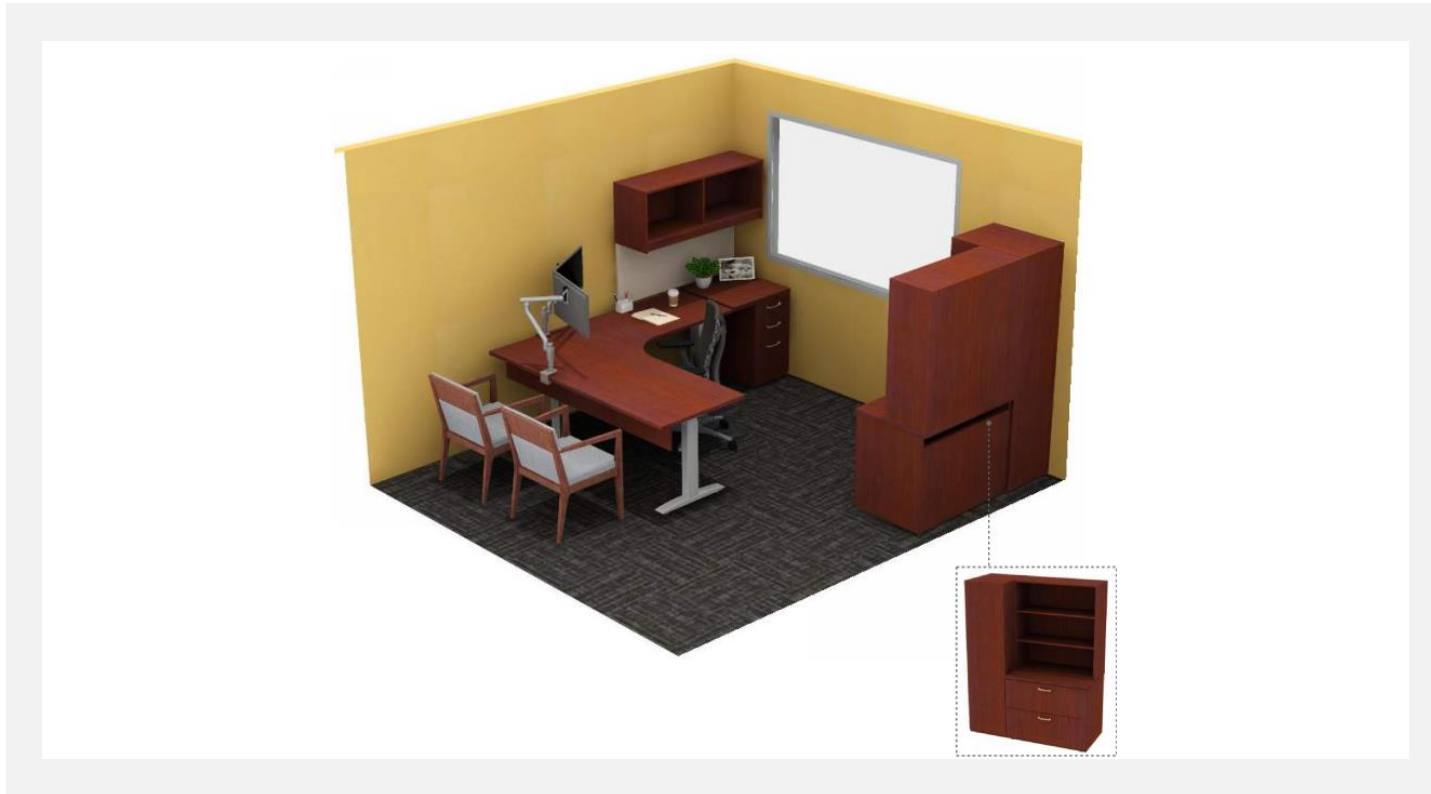
\_\_\_\_\_  
Date

Account Executive: Alan Hernandez ([ahernandez@gmbi.net](mailto:ahernandez@gmbi.net))  
AMA: Cindy Ramirez ([cramirez@gmbi.net](mailto:cramirez@gmbi.net))

Project PAS: Brandi Lukosz  
Page: 3

**SB Valley Municipal Water District**  
Quote# 217126

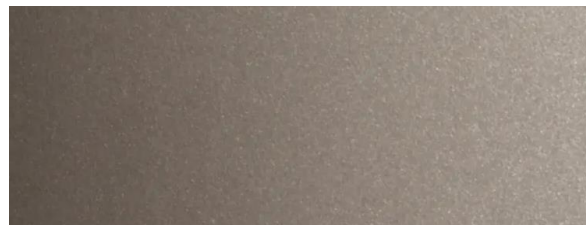
**Office – 2<sup>nd</sup> Floor Private Office**



National  
**Waveworks Private Office  
with Storage**



Surface & Storage Finish:  
Cordovan



Pull Finish:  
Satin Nickel Metallic



Desk Leg Finish:  
Silver

Product images are representational only. Fabrics, finishes and specifications may be different than what is pictured.

Please initial & date here as approval

\_\_\_\_\_

**SB Valley Municipal Water District**  
Quote# 217126

**Office – 2<sup>nd</sup> Floor Seating**



OFS  
**Mingle Side Chair, with Arms**



Seat & Back Finish:  
Arc Com Apollo Granite # 2



Leg & Arm Finish  
MLC Sienna

\_\_\_\_\_



SB VALLEY MUNICIPAL WATER  
 DIST OFFICE - 2ND FL NATIONAL  
 Quote # 217126  
 Department: OFFICE  
 PO #  
 Sales Order #

8/15/2023  
 2:55:55 PM

Discount %

Item	Qty	Contract	Product	List Price		Sell Price		Discount %
				Unit	Extended	Unit	Extended	
ELEVATE								
1	1		GMWDPW Elevate™Wireless Desk Power • White	123.00	123.00	39.10	39.10	%
			Tag: OFFICE					
2	1		GMSPW Elevate™Surge Protector • White	82.00	82.00	26.09	26.09	%
			Tag: OFFICE					
3	1		EL90TLBS Elevate™90° Height Adjustable Base • Silver	1,960.00	1,960.00	627.92	627.92	%
			Tag: OFFICE					
GMHARDWARE								
4	2	FOR MODESTY & UNUSUAL APPLICATIONS	GM HARDWARE GM L-BRACKET	.00	.00	.80	1.60	%
			Tag: OFFICE					
5	1	(1) PER WALL STRIP WALL START OR OH	GMHARDWARE GM WALL ANCHORS	.00	.00	6.82	6.82	%
			Tag: OFFICE					
NATIONAL								
6	1	2436WSSDL	WW2436WSSDL WAVEWORKS,24DX36W,SURFACE,RECTANGULAR,HPL	347.00	347.00	138.80	138.80	60.00 %
		E	• SUPPORT					
		NCW	• EXTENSION					
		X	• RIM PROFILE					
		X	• REED,CORDOVAN					
		X	• GROMMET					
		X	• NO GROMMET					
		X	• WIRE MANAGE					
		X	• NO WIRE MANAGER					
		X	• MODIFIED DEP'					
		X	• NO MODIFIED DEPTH (STANDARD)					
		X	• MODIFIED WID'					
		X	• NO MODIFIED WIDTH (STANDARD)					
		STD	• TOP LAMINATE					
		CW	• STANDARD LAMINATE					
		Tag: OFFICE	• LAMINATE COL					
			• CORDOVAN					



SB VALLEY MUNICIPAL WATER  
 DIST OFFICE - 2ND FL NATIONAL  
 Quote # 217126  
 Department: OFFICE  
 PO #  
 Sales Order #

8/15/2023  
 2:55:55 PM

Discount %

Item	Qty	Contract	Product	List Price		Sell Price		Discount %
				Unit	Extended	Unit	Extended	
NATIONAL								
7	1	2430WSSDL	WW2430WSSVDL	311.00	311.00	124.40	124.40	60.00 %
			WAVEWORKS,24DX30W,SURFACE,RECT,VERT GRAIN,HPL					
		E	• SUPPORT	• EXTENSION				
		NCW	• RIM PROFILE	• REED,CORDOVAN				
		X	• GROMMET	• NO GROMMET				
		X	• WIRE MANAGE	• NO WIRE MANAGER				
		X	• MODIFIED DEP	• NO MODIFIED DEPTH (STANDARD)				
		X	• MODIFIED WID	• NO MODIFIED WIDTH (STANDARD)				
		STD	• TOP LAMINATE	• STANDARD LAMINATE				
		CW	• LAMINATE COL	• CORDOVAN				
		Tag: OFFICE						
8	1	N2424WSSDL	WW2424WSSDL	275.00	275.00	110.00	110.00	60.00 %
			WAVEWORKS,24DX24W,SURFACE,RECTANGULAR,HPL					
		E	• SUPPORT	• EXTENSION				
		NCW	• RIM PROFILE	• REED,CORDOVAN				
		X	• GROMMET	• NO GROMMET				
		X	• WIRE MANAGE	• NO WIRE MANAGER				
		X	• MODIFIED DEP	• NO MODIFIED DEPTH (STANDARD)				
		STD	• TOP LAMINATE	• STANDARD LAMINATE				
		CW	• LAMINATE COL	• CORDOVAN				
		Tag: OFFICE						
9	1	4272WSCEDL	WW4272WSCEDLL7	1,563.00	1,563.00	625.20	625.20	60.00 %
		L7	WAVEWORKS,42DX72W,SURFACE,EXT CORNER,LEFT,HPL					
		E	• SUPPORT	• EXTENSION				
		NCW	• RIM PROFILE	• REED,CORDOVAN				
		X	• GROMMET	• NO GROMMET				
		X	• WIRE MANAGE	• NO WIRE MANAGER				
		STD	• TOP LAMINATE	• STANDARD LAMINATE				
		CW	• LAMINATE COL	• CORDOVAN				
		Tag: OFFICE						
10	1	2336LFM2L	WW2336LFM2L	1,244.00	1,244.00	497.60	497.60	60.00 %
			WAVEWORKS,23DX36W,LATERAL FILE,UNDERSURFACE,2 DRAWER,LAM					
		73SN	• PULL	• SWEEP,SATIN NICKEL METALLIC				
		X	• GROMMET	• NO GROMMET				
		KS1B	• LOCK	• SPECIFY 1 BLACK CORE SEPARATE				
		CW	• DRAWER/DOOF	• CORDOVAN				
		CW	• CHASSIS LAMIN	• CORDOVAN				
		Tag: OFFICE						





SB VALLEY MUNICIPAL WATER  
 DIST OFFICE - 2ND FL NATIONAL  
 Quote # 217126  
 Department: OFFICE  
 PO #  
 Sales Order #

8/15/2023  
 2:55:55 PM

Discount %

Item	Qty	Contract	Product	List Price		Sell Price		Discount %
				Unit	Extended	Unit	Extended	
NATIONAL								
11	1	2315PUBBFL	WW2315PUBBFL	1,037.00	1,037.00	414.80	414.80	60.00 %
			WAVEWORKS,23DX15W,PEDESTAL,BOX/BOX/FILE,UNDERSURFACE,LAM					
		73SN	• PULL	• SWEEP,SATIN NICKEL METALLIC				
		X	• GROMMET	• NO GROMMET				
		KS1B	• LOCK	• SPECIFY 1 BLACK CORE SEPARATE				
		CW	• DRAWER/DOOF	• CORDOVAN				
		CW	• CHASSIS LAMIN	• CORDOVAN				
		Tag: OFFICE						
12	1	6908MPW	WW6908MPL	300.00	300.00	120.00	120.00	60.00 %
			WAVEWORKS,69WX8H,MODESTY PANEL,1/3 HEIGHT,LAMINATE					
		E	• SUPPORT	• EXTENSION				
		X	• MODIFIED WID	• NO MODIFIED WIDTH (STANDARD)				
		CW	• CHASSIS LAMIN	• CORDOVAN				
		Tag: OFFICE						
13	1	1868VSWHRL	WW1868VSWHLL	1,906.00	1,906.00	762.40	762.40	60.00 %
			WAVEWORKS,18WX68H,WARDROBE/STORAGE,LEFT,LAMINATE					
		KS1B	• LOCK	• SPECIFY 1 BLACK CORE SEPARATE				
		CW	• DRAWER/DOOF	• CORDOVAN				
		CW	• CHASSIS LAMIN	• CORDOVAN				
		Tag: OFFICE						
14	1	4819TBRA	NAC4819TBRA	548.00	548.00	219.20	219.20	60.00 %
			ACCESSORIES,47 7/8WX19 1/2H,TACKBOARD,RAILROAD					
		A	• TACKBOARD F/	• GRADE A				
		3744	• FABRIC PATTEI	• REPETITION TAWNY				
		Tag: OFFICE						
15	1	4818SOEML	WW4818SOEML	1,136.00	1,136.00	454.40	454.40	60.00 %
			WAVEWORKS,48WX18H,OVERHEAD,OPEN,WALL MOUNT,LAMINATE					
		CW	• CHASSIS LAMINATE COL	• CORDOVAN				
		Tag: OFFICE						
16	1	3638BCOL	WW3638BCOL	748.00	748.00	299.20	299.20	60.00 %
			WAVEWORKS,36WX38H,BOOKCASE,OPEN,SET ON,LAMINATE					
		CW	• CHASSIS LAMINATE COL	• CORDOVAN				
		Tag: OFFICE						
17	1	1527MPVL	WW1527MPVL	161.00	161.00	64.40	64.40	60.00 %
			WAVEWORKS,15WX27H,PEDESTAL BACK PANEL,VERT GRAIN,LAM					
		CW	• CHASSIS LAMINATE COL	• CORDOVAN				
		Tag: OFFICE						



SB VALLEY MUNICIPAL WATER  
 DIST OFFICE - 2ND FL NATIONAL  
 Quote # 217126  
 Department: OFFICE  
 PO #  
 Sales Order #

8/15/2023  
 2:55:55 PM

Discount %

Item	Qty	Contract	Product	List Price		Sell Price		Discount %
				Unit	Extended	Unit	Extended	
NATIONAL								
18	1	1228SSL	WW1228SSL WAVEWORKS,12DX28H,SUPPORT PANEL,LAMINATE CW • CHASSIS LAMIN • CORDOVAN Tag: OFFICE	161.00	161.00	64.40	64.40	60.00 %
19	4	NCCB001	NCCB002 CASEGOODS,LOCK CORE WITH KEY,BLACK,NO 002 Tag: OFFICE	28.00	112.00	11.20	44.80	60.00 %
20	1	BRWSS	NACBRWSS ACCESSORIES,SURFACE-STORAGE MOUNTING BRACKET,BLACK Tag: OFFICE	44.00	44.00	17.60	17.60	60.00 %
21	1		NAC0613ST ACCESSORIES,6DX13W,BOX DRWR CONVENIENCE TRAY,BLACK Tag: OFFICE	36.00	36.00	14.40	14.40	60.00 %
22	1		98K06UCM PERKS, UNDERSURFACE CABLE MANAGER, PKG 5 Tag: OFFICE	79.00	79.00	31.60	31.60	60.00 %
OFS								
23	2		F47437 Mingle 22.5x27x33.5 Side Chair Sloped Square Extended Arm MLC • Finish • Sienna (MLC) 6 • Grade • Grade 6 Material ETC6 • Grade 6 Material • Non-Carded Grade 6 Material TOR • Tag: OFFICE	1,520.00	3,040.00	606.48	1,212.96	60.10 %

Product Subtotal: \$5,917.69





elevate your workplace™



<b>Project ID / Who &amp; Where</b>	<b>Date:</b>	<b>Quotation</b>
OFFICE - 2ND FL NATIONAL	8/15/2023	<b>217121</b>

<b>BILL TO:</b>	1242	<b>SHIP TO:</b>	
SB VALLEY MUNICIPAL WATER DIST 380 EAST VANDERBILT WAY		SB (VANDERBILT) SB VALLEY MUNICIPAL WATE 380 EAST VANDERBILT WAY	
SAN BERNARDINO CA 92408		SAN BERNARDINO CA 92408	
MELISSA ZOBA Phone: (909)387-9228 Fax: (909)387-9247		MELISSA ZOBA Phone: (909)387-9228 Fax: (909)387-9247	

<b>Product Counts:</b>	Systems	0	Desk Units	1	Tables	0	Files	1	Chairs	2	Storage	0	Ancillary	0
------------------------	---------	---	------------	---	--------	---	-------	---	--------	---	---------	---	-----------	---

<b>GRAND TOTAL</b>	<b>\$7,884.98</b>
--------------------	-------------------

**Product Summary / Scope of Work**

COUNTY OF SAN BERNARDINO CONTRACT# 22-1283

QUOTE FOR: NATIONAL, OFS & ELEVATE PRODUCT

\*\*\*PREVAILING WAGE\*\*\*

FOR: OFFICE - 2ND FL NATIONAL

LEAD TIME: 6-8 WEEKS

SCOPE OF WORK:

- 1) G/M TO RECEIVE AND INSPECT PRODUCT.
- 2) G/M TO REMOVE AND DISPOSE OF OLD PRIVATE OFFICE PRODUCT.
- 3) G/M TO BRING TO SITE AND SET NATIONAL, OFS & ELEVATE PRODUCT INTO PLACE.
- 4) PLEASE CONTACT MELISSA ZOBA (909) 387-9228 TO SCHEDULE SERVICES.

\*\*DESIGN SERVICES BREAKDOWN\*\*

PREVAILING WAGE NON TAXABLE DESIGN SERVICES: (4.82) HRS @ \$55.00/HR = \$265.10

\*\*G/M WILL HOLD PRODUCT FOR UP TO (2) WEEKS AT OUR WAREHOUSE FREE OF CHARGE. ANY PRODUCT REMAINING IN OUR WAREHOUSE AFTER THIS PERIOD WILL INCUR STORAGE FEES

\*\*NOTE: QUOTE WILL NEED TO BE ADJUSTED IF SERVICES TO TAKE PLACE AFTER BUSINESS HOURS, OR DURING THE WEEKEND\*\*

Account Executive: Alan Hernandez ( <a href="mailto:ahernandez@gmbi.net">ahernandez@gmbi.net</a> )	Project PAS: Brandi Lukosz
AMA: Cindy Ramirez ( <a href="mailto:cramirez@gmbi.net">cramirez@gmbi.net</a> )	Page: 1

**800-686-6583 800-686-6583 Fax: 951-684-0837**  
 G/M Business Interiors  
 1099 W. La Cadena Drive, Riverside CA, 92501  
<http://www.gmbi.net>

BOM		Who/What/Where				List	List Ext	Sell	Sell Ext
LOT	1	OFFICE			13,391.00	13,391.00	5,182.07	5,182.07	
<b>Description:</b>				Non-Tax Srvcs.	Taxable Srvcs.	Freight	Design Fee		
(01) EA NATIONAL WAVEWORKS PRIVATE OFFICE WITH HEIGHT ADJUSTABLE BASE, (02) EA NATIONAL WAVEWORKS BOOKCASES, (01) EA NATIONAL PEDESTAL, B/B/F, & (02) EA OFS MINGLE SIDE CHAIRS				.00	.00	.00	.00		
BOM: See Attached Bill of Materials									
Piece Count: 23									

BOM		Who/What/Where				List	List Ext	Sell	Sell Ext
LOT	1	Z G/M Services			.00	.00	.00	.00	
<b>Description:</b>				Non-Tax Srvcs.	Taxable Srvcs.	Freight	Design Fee		
<p>G/M Furniture Planning Services, if applicable, include field measurements, drawing AutoCAD building shells, developing typical workstations and private office standards, space planning typicals into the floorplan, developing furniture color schemes, order specifications and receiving client approvals for all drawings and color schemes for order entry.</p> <p>G/M Project Management Services include drawings and field measure checks, order scheduling &amp; routing, electrical consulting with contractors, field checks, monitoring construction progress along with delivery, assembly, punchlist coordination through final completion.</p> <p>G/M Project Services include receiving and inspecting of each product, shipping damage adjudication with vendors, transporting product if applicable, staging of products, delivery, setting in place of all furniture, level clean and polishing of all items, vacuum floors and recycling of all waste products associated with the furniture project.</p> <p>G/M Punchlist Services include formulation of the project punchlist, ordering and receiving of punchlist products, and delivery and assembly to finalize the punchlist and project.</p> <p>G/M Warranty Services Department is provided to offer clients our no-charge warranty service work for all furniture protected under valid factory warranties. G/M maintains electronic copies of our Client's invoices for warranty enforcement. For service requests, our Warranty Department may be contacted via e-mail at <a href="mailto:warranty@gmbi.net">warranty@gmbi.net</a></p>				1,843.00	130.00	.00	265.10		
BOM: See Attached Bill of Materials									
Piece Count:									

Account Executive: Alan Hernandez ([ahernandez@gmbi.net](mailto:ahernandez@gmbi.net))  
 AMA: Cindy Ramirez ([cramirez@gmbi.net](mailto:cramirez@gmbi.net))


Project PAS: Brandi Lukosz  
 Page: 2

**Featured Product of the Month**

GEIGER JD WATERFALL TABLE BY DATESWEISER



G/M accepts credit cards at 0% for purchases up to \$10,000  
Purchases over \$10,000 requires a surcharge of 2.75%



<b>Product Subtotal:</b>	<b>\$5,182.07</b>
<b>Services (Taxable)</b>	<b>\$130.00</b>
<b>Freight (Taxable)</b>	<b>\$0.00</b>
<b>Services (Non-Taxable)</b>	<b>\$1,843.00</b>
<b>Design Services (Non-Taxable)</b>	<b>\$265.10</b>
<b>Taxable Subtotal:</b>	<b>\$5,312.07</b>
<b>Non-Taxable Subtotal:</b>	<b>\$2,108.10</b>
<b>Sales Tax (8.750%)</b>	<b>\$464.81</b>
<b>Total:</b>	<b>\$7,884.98</b>

<b>Terms:</b>		
<b>Net 60 Days</b>	<b>100%</b>	<b>\$7,884.98</b>

I have reviewed the quote, the bill of materials, the drawings (if applicable), the color cards (if applicable), and other associated exhibits for my order.

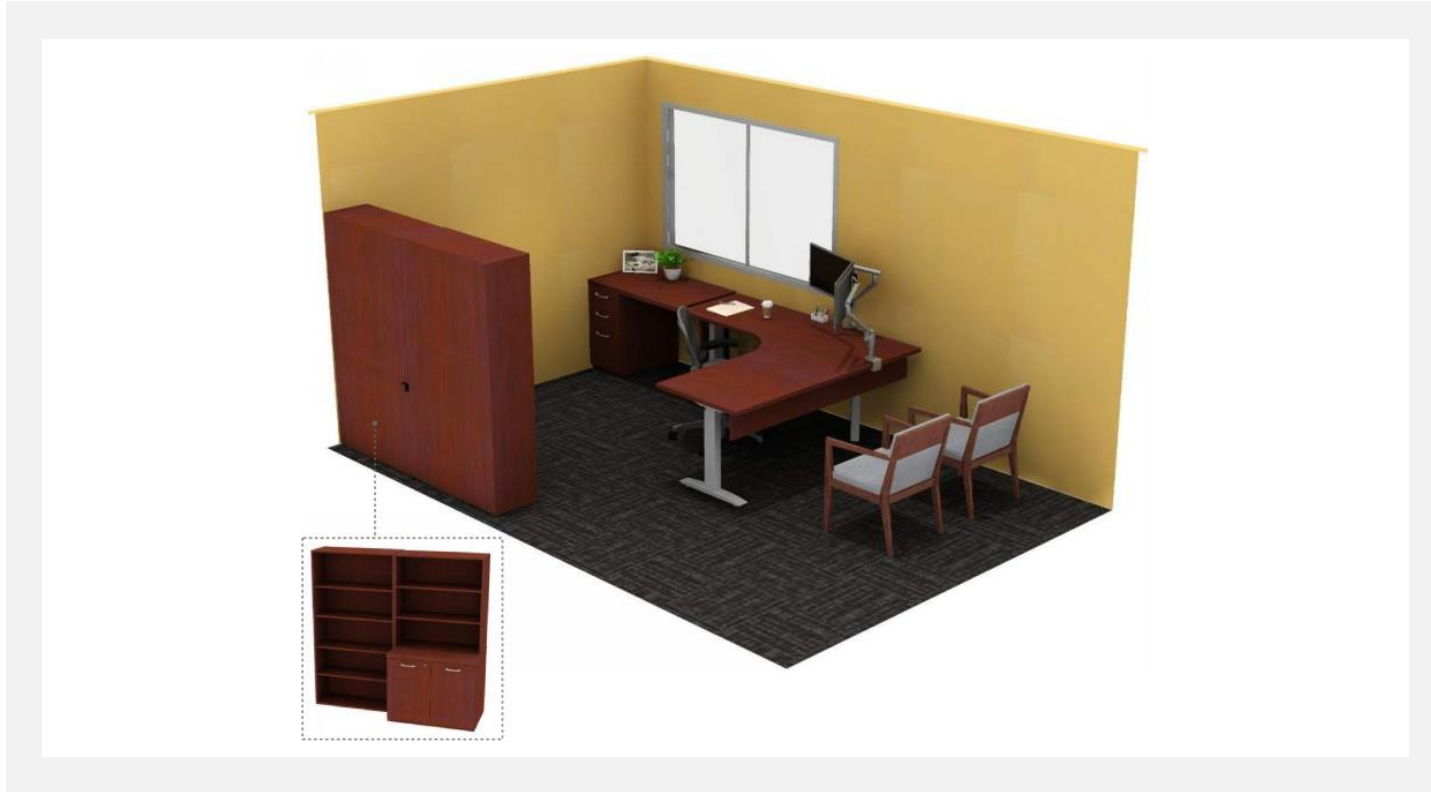
- I approve the colors, fabrics, and finishes as previously selected and correct as shown on the attached exhibit.
- I am satisfied that the product I have selected is the correct size and is suitable and will perform for its intended purpose.
- I am aware this product is manufactured to order and is not returnable to G/M or to the manufacturer.
- I understand that legal title to the product will transfer upon delivery to my commercial or residential location and all associated labor is taxable until title transfers.
- I am aware additional costs charged for inside delivery, staging, setting in place, assembly, leveling, cleaning, polishing, recycling of waste materials are separately stated and are elected as an additional contract option.
- I am aware of the grand total price of this contract as shown on this quote.
- G/M is ordering your furniture from a variety of manufacturers to be aggregated and received into our G/M operated warehouse. Once the final portion of your order has been received, a "ready to deliver" notification will be sent to you. G/M, at this point, will graciously, store your complete order for up to two weeks at no charge. If for some reason you cannot accept a timely delivery within two weeks, a quote for one month's handling and storage shall be calculated and forwarded to you.
- This quote is valid for 30 days.

<b>Approved by:</b>			
	Signature	Print Name/Title	Date

Account Executive: Alan Hernandez ( <a href="mailto:ahernandez@gmbi.net">ahernandez@gmbi.net</a> )	Project PAS: Brandi Lukosz
AMA: Cindy Ramirez ( <a href="mailto:cramirez@gmbi.net">cramirez@gmbi.net</a> )	Page: 3

**SB Valley Municipal Water District**  
Quote# 217121

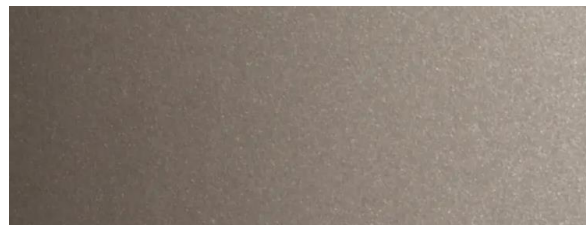
**Office – 2<sup>nd</sup> Floor**  
Private Office



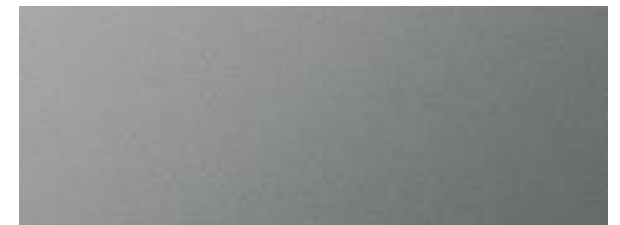
National  
**Waveworks Private Office  
with Storage**



Surface & Storage Finish:  
Cordovan



Pull Finish:  
Satin Nickel Metallic



Desk Leg Finish:  
Silver

Product images are representational only. Fabrics, finishes and specifications may be different than what is pictured.

Please initial & date  
here as approval

\_\_\_\_\_

**SB Valley Municipal Water District**  
Quote# 217121

**Office – 2<sup>nd</sup> Floor**  
Seating



Seat & Back Finish:  
Arc Com Apollo Granite # 2



Leg & Arm Finish  
MLC Sienna

\_\_\_\_\_



SB VALLEY MUNICIPAL WATER  
 DIST OFFICE - 2ND FL NATIONAL  
 Quote # 217121  
 Department: OFFICE  
 PO #  
 Sales Order #

8/15/2023  
 1:42:35 PM

Discount %

Item	Qty	Contract	Product	List Price		Sell Price		Discount %
				Unit	Extended	Unit	Extended	
ELEVATE								
1	1		EL90TLBS Elevate™90° Height Adjustable Base • Silver	1,960.00	1,960.00	627.92	627.92	%
Tag: OFFICE								
2	1		GMSPW Elevate™Surge Protector • White	82.00	82.00	26.09	26.09	%
Tag: OFFICE								
3	1		GMWDPW Elevate™Wireless Desk Power • White	123.00	123.00	39.10	39.10	%
Tag: OFFICE								
GMHARDWARE								
4	2	FOR MODESTY & UNUSUAL APPLICATIONS	GM HARDWARE GM L-BRACKET •	.00	.00	.80	1.60	%
Tag: OFFICE								
NATIONAL								
5	1		98K06UCM PERKS, UNDERSURFACE CABLE MANAGER, PKG 5 •	79.00	79.00	31.60	31.60	60.00 %
Tag: OFFICE								
6	1		NAC0613ST ACCESSORIES,6DX13W,BOX DRWR CONVENIENCE TRAY,BLACK •	36.00	36.00	14.40	14.40	60.00 %
Tag: OFFICE								
7	1	BRWSS	NACBRWSS ACCESSORIES,SURFACE-STORAGE MOUNTING BRACKET,BLACK •	44.00	44.00	17.60	17.60	60.00 %
Tag: OFFICE								
8	3	NCCB001	NCCB001 CASEGOODS,LOCK CORE WITH KEY,BLACK,NO 001 •	28.00	84.00	11.20	33.60	60.00 %
Tag: OFFICE								





SB VALLEY MUNICIPAL WATER  
 DIST OFFICE - 2ND FL NATIONAL  
 Quote # 217121  
 Department: OFFICE  
 PO #  
 Sales Order #

8/15/2023  
 1:42:35 PM

Discount %

Item	Qty	Contract	Product	List Price		Sell Price		Discount %
				Unit	Extended	Unit	Extended	
NATIONAL								
9	1	1228SSL	WW1228SSL	161.00	161.00	64.40	64.40	60.00 %
			WAVEWORKS,12DX28H,SUPPORT PANEL,LAMINATE					
			<ul style="list-style-type: none"> <li>• CHASSIS LAMIN</li> <li>• CORDOVAN</li> </ul>					
			CW					
			Tag: OFFICE					
10	1	1527MPVL	WW1527MPVL	161.00	161.00	64.40	64.40	60.00 %
			WAVEWORKS,15WX27H,PEDESTAL BACK PANEL,VERT GRAIN,LAM					
			<ul style="list-style-type: none"> <li>• CHASSIS LAMIN</li> <li>• CORDOVAN</li> </ul>					
			CW					
			Tag: OFFICE					
11	1	3638BCOL	WW3638BCOL	748.00	748.00	299.20	299.20	60.00 %
			WAVEWORKS,36WX38H,BOOKCASE,OPEN,SET ON,LAMINATE					
			<ul style="list-style-type: none"> <li>• CHASSIS LAMIN</li> <li>• CORDOVAN</li> </ul>					
			CW					
			Tag: OFFICE					
12	1	N3669BCOFL	WWN3669BCOFL	1,211.00	1,211.00	484.40	484.40	60.00 %
			WAVEWORKS,36WX69H,BOOKCASE,OPEN,FREESTANDING,LAMINATE					
			<ul style="list-style-type: none"> <li>• CHASSIS LAMIN</li> <li>• CORDOVAN</li> </ul>					
			CW					
			Tag: OFFICE					
13	1	6908MPW	WW6908MPL	300.00	300.00	120.00	120.00	60.00 %
			WAVEWORKS,69WX8H,MODESTY PANEL,1/3 HEIGHT,LAMINATE					
			<ul style="list-style-type: none"> <li>• SUPPORT</li> <li>• EXTENSION</li> <li>• MODIFIED WIDTH</li> <li>• NO MODIFIED WIDTH (STANDARD)</li> <li>• CHASSIS LAMIN</li> <li>• CORDOVAN</li> </ul>					
			E					
			X					
			CW					
			Tag: OFFICE					
14	1	2315PUBBFL	WW2315PUBBFL	1,037.00	1,037.00	414.80	414.80	60.00 %
			WAVEWORKS,23DX15W,PEDESTAL,BOX/BOX/FILE,UNDERSURFACE,LAM					
			<ul style="list-style-type: none"> <li>• PULL</li> <li>• SWEEP,SATIN NICKEL METALLIC</li> <li>• GROMMET</li> <li>• NO GROMMET</li> <li>• LOCK</li> <li>• SPECIFY 1 BLACK CORE SEPARATE</li> <li>• DRAWER/DOOF</li> <li>• CORDOVAN</li> <li>• CHASSIS LAMIN</li> <li>• CORDOVAN</li> </ul>					
			73SN					
			X					
			KS1B					
			CW					
			CW					
			Tag: OFFICE					
15	1	4272WSCED	WW4272WSCEDRL7	1,563.00	1,563.00	625.20	625.20	60.00 %
		RL7	WAVEWORKS,42DX72W,SURFACE,EXT CORNER,RIGHT,HPL					
			<ul style="list-style-type: none"> <li>• SUPPORT</li> <li>• EXTENSION</li> <li>• RIM PROFILE</li> <li>• REED,CORDOVAN</li> <li>• GROMMET</li> <li>• NO GROMMET</li> <li>• WIRE MANAGER</li> <li>• NO WIRE MANAGER</li> <li>• TOP LAMINATE</li> <li>• STANDARD LAMINATE</li> <li>• LAMINATE COL</li> <li>• CORDOVAN</li> </ul>					
			E					
			NCW					
			X					
			X					
			STD					
			CW					
			Tag: OFFICE					



SB VALLEY MUNICIPAL WATER  
 DIST OFFICE - 2ND FL NATIONAL  
 Quote # 217121  
 Department: OFFICE  
 PO #  
 Sales Order #

8/15/2023  
 1:42:35 PM

Discount %

Item	Qty	Contract	Product	List Price		Sell Price		Discount %
				Unit	Extended	Unit	Extended	
NATIONAL								
16	1	N2436PFHL	WWN2436PFHL	1,892.00	1,892.00	756.80	756.80	60.00 %
			<b>WAVEWORKS,24DX36W,DOUBLE DOOR UNIT,HPL</b>					
		NCW	• RIM PROFILE	• REED,CORDOVAN				
		73SN	• PULL	• SWEEP,SATIN NICKEL METALLIC				
		KS1B	• LOCK	• SPECIFY 1 BLACK CORE SEPARATE				
		STD	• TOP LAMINATE	• STANDARD LAMINATE				
		CW	• LAMINATE COL	• CORDOVAN				
		CW	• DRAWER/DOOF	• CORDOVAN				
		CW	• CHASSIS LAMIN	• CORDOVAN				
		Tag: OFFICE						
17	1	2430WSSDL	WW2430WSSVDL	311.00	311.00	124.40	124.40	60.00 %
			<b>WAVEWORKS,24DX30W,SURFACE,RECT,VERT GRAIN,HPL</b>					
		E	• SUPPORT	• EXTENSION				
		NCW	• RIM PROFILE	• REED,CORDOVAN				
		X	• GROMMET	• NO GROMMET				
		X	• WIRE MANAGE	• NO WIRE MANAGER				
		X	• MODIFIED DEP	• NO MODIFIED DEPTH (STANDARD)				
		X	• MODIFIED WID	• NO MODIFIED WIDTH (STANDARD)				
		STD	• TOP LAMINATE	• STANDARD LAMINATE				
		CW	• LAMINATE COL	• CORDOVAN				
		Tag: OFFICE						
18	1	N2442WSSDL	WWN2442WSSDL	559.00	559.00	223.60	223.60	60.00 %
			<b>WAVEWORKS,24DX42W,SURFACE,RECTANGULAR,HPL</b>					
		E	• SUPPORT	• EXTENSION				
		NCW	• RIM PROFILE	• REED,CORDOVAN				
		X	• GROMMET	• NO GROMMET				
		X	• WIRE MANAGE	• NO WIRE MANAGER				
		X	• MODIFIED DEP	• NO MODIFIED DEPTH (STANDARD)				
		X	• MODIFIED WID	• NO MODIFIED WIDTH (STANDARD)				
		STD	• TOP LAMINATE	• STANDARD LAMINATE				
		CW	• LAMINATE COL	• CORDOVAN				
		Tag: OFFICE						
OFS								
19	2		F47437	1,520.00	3,040.00	606.48	1,212.96	60.10 %
			<b>Mingle 22.5x27x33.5 Side Chair Sloped Square Extended Arm</b>					
		MLC	• Finish	• Sienna (MLC)				
		6	• Grade	• Grade 6 Material				
		ETC6	• Grade 6 Material	• Non-Carded Grade 6 Material				
		TOR	•	• ARC COM APOLLO GRANITE #2				
		Tag: OFFICE						





SB VALLEY MUNICIPAL WATER  
 DIST OFFICE - 2ND FL NATIONAL  
 Quote # 217121  
 Department: OFFICE  
 PO #  
 Sales Order #

8/15/2023  
 1:42:35 PM

Discount %

Item	Qty	Contract	Product	List Price		Sell Price	
				Unit	Extended	Unit	Extended

Product Subtotal: \$5,182.07



elevate your workplace™



<b>Project ID / Who &amp; Where</b>	<b>Date:</b>	<b>Quotation</b>
INTERNS AREA - SBVMWD 2ND FL	8/8/2023	<b>219953</b>

<b>BILL TO:</b>	1242	<b>SHIP TO:</b>	
SB VALLEY MUNICIPAL WATER DIST 380 EAST VANDERBILT WAY		SB (VANDERBILT) SB VALLEY MUNICIPAL WATE 380 EAST VANDERBILT WAY	
SAN BERNARDINO CA 92408		SAN BERNARDINO CA 92408	
MELISSA ZOBA Phone: (909)387-9228 Fax: (909)387-9247		MELISSA ZOBA Phone: (909)387-9228 Fax: (909)387-9247	

<b>Product Counts:</b>	Systems	0	Desk Units	2	Tables	0	Files	0	Chairs	0	Storage	0	Ancillary	0
------------------------	---------	---	------------	---	--------	---	-------	---	--------	---	---------	---	-----------	---

<b>GRAND TOTAL</b>	<b>\$3,032.25</b>
--------------------	-------------------

**Product Summary / Scope of Work**

QUOTE FOR: HERMAN MILLER CANVAS SURFACE & PARTS NEEDED TO COMPLETE BULLPEN

FOR: INTERNS AREA - SBVMWD 2ND FL

LEAD TIME: 6 - 8 WEEKS

SCOPE OF WORK:

- 1) G/M TO RECEIVE AND INSPECT ALL PRODUCT AT OUR SD WAREHOUSE
- 2) G/M TO DISASSEMBLE & RELOCATE CLIENT EXISTING WORK SURFACES INTO A BULLPEN WITH (01) EA NEW HERMAN MILLER CANVAS WORK SURFACE

**\*\*NOTE: CLIENT RESPONSIBLE FOR COORDINATING AN ELECTRICIAN TO PROVIDE REQUESTED CIRCUITRY REQUIREMENTS. G/M TO SUPPLY POWER WHIPS FOR ELECTRICIAN TO HARDWIRE PRIOR TO FURNITURE ASSEMBLY AT LOCATIONS NOTED ON DRAWINGS ATTACHED**

- 3) G/M SERVICES QUOTED AS (1) TRIP DURING NORMAL BUSINESS HOURS
- 4) JOBSITE MUST BE FREE AND CLEAR OF ALL EXISTING FURNITURE AND PERSONAL ITEMS PRIOR TO G/M ARRIVAL
- 5) G/M TO CONTACT MELISSA ZOBA (909) 387-9228 TO SCHEDULE SERVICES DATE/TIME ONCE ALL PRODUCT HAS BEEN RECEIVED AT OUR SD WAREHOUSE AND ENTERED INTO OUR SYSTEM

**\*\*G/M WILL HOLD PRODUCT FOR UP TO (2) WEEKS AT OUR WAREHOUSE FREE OF CHARGE. ANY PRODUCT REMAINING IN OUR WAREHOUSE AFTER THIS PERIOD WILL INCUR STORAGE FEES**

Account Executive: Alan Hernandez ( <a href="mailto:ahernandez@gmbi.net">ahernandez@gmbi.net</a> )	Project PAS:
AMA: Cindy Ramirez ( <a href="mailto:cramirez@gmbi.net">cramirez@gmbi.net</a> )	Page: 1

\*\*NOTE: QUOTE WILL NEED TO BE ADJUSTED IF SERVICES TO TAKE PLACE AFTER BUSINESS HOURS, OR DURING THE WEEKEND

<b>G/M</b>	<b>Quotation # 219953</b>
------------	---------------------------

BOM		A	Who/What/Where	List	List Ext	Sell	Sell Ext
LOT	1	INTERNS AREA		7,855.00	7,855.00	2,051.31	2,051.31
<b>Description:</b>				Non-Tax Srvc.	Taxable Srvc.	Freight	Design Fee
GM TO DISSASSEMBLE & RELOCATE CLIENT EXISTING WORK SURFACES INTO A BULLPEN WITH (01) EA NEW HERMAN MILLER CANVAS WORK SURFACE				.00	.00	.00	.00
BOM: See Attached Bill of Materials							
Piece Count: 30							

BOM		B	Who/What/Where	List	List Ext	Sell	Sell Ext
LOT	1	Z G/M Services		.00	.00	.00	.00
<b>Description:</b>				Non-Tax Srvc.	Taxable Srvc.	Freight	Design Fee
<p>G/M Furniture Planning Services, if applicable, include field measurements, drawing AutoCAD building shells, developing typical workstations and private office standards, space planning typicals into the floorplan, developing furniture color schemes, order specifications and receiving client approvals for all drawings and color schemes for order entry.</p> <p>G/M Project Management Services include drawings and field measure checks, order scheduling &amp; routing, electrical consulting with contractors, field checks, monitoring construction progress along with delivery, assembly, punchlist coordination through final completion.</p> <p>G/M Project Services include receiving and inspecting of each product, shipping damage adjudication with vendors, transporting product if applicable, staging of products, delivery, setting in place of all furniture, level clean and polishing of all items, vacuum floors and recycling of all waste products associated with the furniture project.</p> <p>G/M Punchlist Services include formulation of the project punchlist, ordering and receiving of punchlist products, and delivery and assembly to finalize the punchlist and project.</p> <p>G/M Warranty Services Department is provided to offer clients our no-charge warranty service work for all furniture protected under valid factory warranties. G/M maintains electronic copies of our Client's invoices for warranty enforcement. For service requests, our Warranty Department may be contacted via e-mail at <a href="mailto:warranty@gmbi.net">warranty@gmbi.net</a></p>				541.00	28.00	.00	230.00
BOM: See Attached Bill of Materials							
Piece Count:							

Account Executive: Alan Hernandez ( <a href="mailto:ahernandez@gmbi.net">ahernandez@gmbi.net</a> )	Project PAS:	
AMA: Cindy Ramirez ( <a href="mailto:cramirez@gmbi.net">cramirez@gmbi.net</a> )		Page: 2

**Featured Product of the Month**

GEIGER JD WATERFALL TABLE BY DATESWEISER

G/M accepts credit cards at 0% for purchases up to \$10,000  
Purchases over \$10,000 requires a surcharge of 2.75%

<b>Product Subtotal:</b>	<b>\$2,051.31</b>
<b>Services (Taxable)</b>	<b>\$28.00</b>
<b>Freight (Taxable)</b>	<b>\$0.00</b>
<b>Services (Non-Taxable)</b>	<b>\$541.00</b>
<b>Design Services (Non-Taxable)</b>	<b>\$230.00</b>
<b>Taxable Subtotal:</b>	<b>\$2,079.31</b>
<b>Non-Taxable Subtotal:</b>	<b>\$771.00</b>
<b>Sales Tax (8.750%)</b>	<b>\$181.94</b>
<b>Total:</b>	<b>\$3,032.25</b>

<b>Terms:</b>		
<b>Net 60 Days</b>	<b>100%</b>	<b>\$3,032.25</b>

I have reviewed the quote, the bill of materials, the drawings (if applicable), the color cards (if applicable), and other associated exhibits for my order.

- I approve the colors, fabrics, and finishes as previously selected and correct as shown on the attached exhibit.
- I am satisfied that the product I have selected is the correct size and is suitable and will perform for its intended purpose.
- I am aware this product is manufactured to order and is not returnable to G/M or to the manufacturer.
- I understand that legal title to the product will transfer upon delivery to my commercial or residential location and all associated labor is taxable until title transfers.
- I am aware additional costs charged for inside delivery, staging, setting in place, assembly, leveling, cleaning, polishing, recycling of waste materials are separately stated and are elected as an additional contract option.
- I am aware of the grand total price of this contract as shown on this quote.
- G/M is ordering your furniture from a variety of manufacturers to be aggregated and received into our G/M operated warehouse. Once the final portion of your order has been received, a "ready to deliver" notification will be sent to you. G/M, at this point, will graciously, store your complete order for up to two weeks at no charge. If for some reason you cannot accept a timely delivery within two weeks, a quote for one month's handling and storage shall be calculated and forwarded to you.
- This quote is valid for 30 days.

<b>Approved by:</b>			
	Signature	Print Name/Title	Date

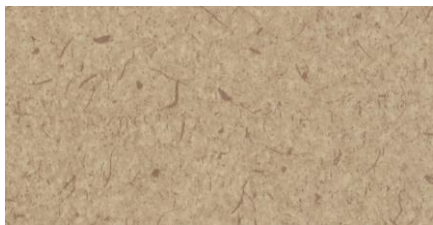
Account Executive: Alan Hernandez ( <a href="mailto:ahernandez@gmbi.net">ahernandez@gmbi.net</a> )	Project PAS:
AMA: Cindy Ramirez ( <a href="mailto:cramirez@gmbi.net">cramirez@gmbi.net</a> )	Page: 3

SB Valley Municipal Water District  
Quote# 219953

Melissa Zoba – Interns Area  
Option 2



Herman Miller  
**Canvas Bullpen with New Surface, 30Dx60W**



Surface Finish:  
Pionite Coriander Fiber



Pari Screen Frame Finish:  
Graphite Satin



Pari Screen Fabric Finish:  
Grasscloth Silver Birch



Leg Support Finish:  
G1 Graphite

Product images are representational only. Fabrics, finishes and specifications may be different than what is pictured.

Please initial & date here as approval

\_\_\_\_\_



SB VALLEY MUNICIPAL WATER DIS 8/8/2023  
 INTERNS AREA - SBVMWD 2ND FL 5:32:32 PM  
 Quote # 219953  
 Department: INTERNS AREA  
 PO #  
 Sales Order # Discount %

Item	Qty	Contract	Product	List Price		Sell Price		Discount %
				Unit	Extended	Unit	Extended	
ELEVATE								
1	3		GMSPB Elevate™ Surge Protector • Black	82.00	246.00	26.09	78.27	%
Tag: INTERNS AREA								
HERMANMILLER								
2	2		232092-228 Lock Plug & Keys •	.00	.00	.00	.00	%
Tag: INTERNS AREA								
3	2		232092-229 Lock Plug & Keys •	.00	.00	.00	.00	%
Tag: INTERNS AREA								
4	2		232092-230 Lock Plug & Keys •	.00	.00	.00	.00	%
Tag: INTERNS AREA								
5	2		232092-231 Lock Plug & Keys •	.00	.00	.00	.00	%
Tag: INTERNS AREA								
6	3	BKT	FT29B.1 +Surface Ganging Bracket,single •	35.00	105.00	9.08	27.24	74.07 %
Tag: INTERNS AREA								
7	1	BKT	FT29B.2 +Surface Ganging Bracket,pair •	61.00	61.00	15.82	15.82	74.07 %
Tag: INTERNS AREA								
8	1	STF48	FV696.48 +Stiffener, 48W •	99.00	99.00	25.67	25.67	74.07 %
Tag: INTERNS AREA								
9	3		G1331. +Cord Cleat 2/Pkg •	33.00	99.00	8.56	25.68	74.07 %
Tag: INTERNS AREA								



SB VALLEY MUNICIPAL WATER DIS 8/8/2023  
 INTERNS AREA - SBVMWD 2ND FL 5:32:32 PM  
 Quote # 219953  
 Department: INTERNS AREA  
 PO #  
 Sales Order # Discount %

Item	Qty	Contract	Product	List Price		Sell Price		Discount %
				Unit	Extended	Unit	Extended	
HERMANMILLER								
10	2	OS36FS	FT2A2.A24FS +Open Support Leg,Archtrl Foot,Pen/D-Shpd Surf Attchd,Inset, for 24"D Peninsula,Fxd Hght,Non-Hnded Support G1 ● Surface Finish ● @graphite Tag: INTERNS AREA	579.00	1,158.00	150.13	300.26	74.07 %
11	1	OS24	FV2A2.24FR +Open Support Leg,Archtrl Foot,Fxd Hght,Rt 24D G1 ● Surface Finish ● +graphite Tag: INTERNS AREA	616.00	616.00	159.73	159.73	74.07 %
12	3	OS2A	FV2A2.2AFS +Open Support Leg,Archtrl Foot,Fxd Hght, 12D Shared G1 ● Surface Finish ● +graphite Tag: INTERNS AREA	377.00	1,131.00	97.76	293.28	74.07 %
13	2	SL	FV689.P +Support Leg,Post G1 ● Surface Finish ● +graphite Tag: INTERNS AREA	231.00	462.00	59.90	119.80	74.07 %
14	1	24/66	FTS10.2466LS +Rectangular Surface,Sq-Edge, Lam Top/Thermo Edge, 24D 66W, No Brkts ZZ ● Top Finish ● @open line high-pressure laminate (nonstandard) 9Y0N ● ● PIONITEAT981-SD CORIANDER SG ● Edge Finish ● +slate grey Tag: INTERNS AREA	682.00	682.00	176.84	176.84	74.07 %
15	2	A46/60R	FT353.CA4660R @Pari Screen, Surface Attached w/Modesty, Canvas Surf Att, Tack Fabric Horz 9H Below Surf 46H 60W CW ● Cable Trough ● @cable way G2 ● Cable Trough Fin ● @graphite satin G2 ● Bracket Finish ● @graphite satin 2I ● Fabric ● +grasscloth-Pr Cat 1 01 ● 2I_Colors ● +grasscloth silver birch Tag: INTERNS AREA	1,598.00	3,196.00	414.36	828.72	74.07 %



SB VALLEY MUNICIPAL WATER DIS 8/8/2023  
 INTERNS AREA - SBVMWD 2ND FL 5:32:32 PM  
 Quote # 219953  
 Department: INTERNS AREA  
 PO #  
 Sales Order # Discount %

Item	Qty	Contract	Product	List Price		Sell Price	
				Unit	Extended	Unit	Extended
				<b>Product Subtotal:</b>		<b>\$2,051.31</b>	



**DATE:** September 7, 2023  
**TO:** Board of Directors' Workshop – Policy/Administration  
**FROM:** Kelly Malloy, Strategic Communications Manager  
**SUBJECT:** ACWA Committee Consideration Forms for 2024-25 Term

---

### **Staff Recommendation**

Provide direction to staff regarding the Board of Directors interest in submitting Consideration Forms for any of the 13 ACWA Standing Committees.

### **Summary**

ACWA maintains 13 standing committees that meet regarding the full range of topics relevant to the water industry. ACWA is currently accepting Consideration Forms through September 30 from members interested in serving during the 2024-'25 Term.

### **Background**

ACWA has 13 standing committees that engage in state and local issues, policies, and legislation. Committees are structured to include representatives from all 10 ACWA Regions. Appointments are for two-year terms that begin on January 1 of even-numbered years. Consideration forms are due by September 30 with committee appointments taking place on December 13.

Standing Committees include:

1. Agriculture
2. Business Development
3. Communications
4. Energy
5. Federal Affairs
6. Finance
7. Groundwater
8. Legal Affairs
9. Local Government

- 10. Membership
- 11. State Legislative
- 12. Water Management
- 13. Water Quality

Each committee has a specialized area of focus. When submitting names for consideration, ACWA encourages that participants do so with the understanding that committees need active, involved individuals able to commit time and expertise.

**District Strategic Plan Application**

Participation in ACWA committees aligns with the mission of *working collaboratively to provide a reliable and sustainable water supply to support the changing needs of our region's people and environment along with the goal to establish San Bernardino Valley as an industry leader, recognized locally by the public and our peers for the leadership and positive impact we have within our region and the state.*

**Fiscal Impact**

There is no fiscal impact with this item, however if appointed to a committee San Bernardino Valley would be responsible for all costs associated with the participation of its representatives on ACWA committees.

**Attachments**

ACWA Committee Information



# COMMITTEE CONSIDERATION FORM

PLEASE PRINT LEGIBLY

Agency Name (DO NOT use acronyms or abbreviations)		ACWA Region #
Agency Address	City, State & Zip	Phone

**BELOW PLEASE LIST ALL THOSE INTERESTED IN BEING ON ACWA COMMITTEES FOR YOUR AGENCY. FOR ADDITIONAL RECOMMENDATIONS PLEASE FILL OUT ANOTHER FORM.**

*\*If an individual is not an agency employee or director, please indicate company affiliation.*

Name	Title/Company*	Email Address
Committee 1st Choice	Committee 2nd Choice	Committee 3rd Choice
Name	Title/Company*	Email Address
Committee 1st Choice	Committee 2nd Choice	Committee 3rd Choice
Name	Title/Company*	Email Address
Committee 1st Choice	Committee 2nd Choice	Committee 3rd Choice
Name	Title/Company*	Email Address
Committee 1st Choice	Committee 2nd Choice	Committee 3rd Choice
Name	Title/Company*	Email Address
Committee 1st Choice	Committee 2nd Choice	Committee 3rd Choice
Name	Title/Company*	Email Address
Committee 1st Choice	Committee 2nd Choice	Committee 3rd Choice

Signature (Agency/District General Manager or Board President signature required)	Title	Date
---	-------	------

*Committee member contact information will be shared on the committee roster and is to be used for committee business only.*

**QUESTIONS?**  
Contact [acwacommittees@acwa.com](mailto:acwacommittees@acwa.com)  
or (916) 441-4545

980 9th Street, Suite 1000  
Sacramento, CA 95814  
[www.acwa.com](http://www.acwa.com)